

# INTELLIGENT VIDEO SURVEILLANCE

## *Product Guide 2024*

**GRUNDIG**



# What should a video surveillance system of today be able to deliver?

Many small to medium-sized systems can manage without any special requirements. Often, it's enough just to save video sequences, so that in case of an incident the course of events can be determined in the light of the recordings. For standard applications like this, GRUNDIG Security offers a comprehensive range: cameras that supply perfect high-resolution images, irrespective of the light conditions, and recorders that store video sequences for weeks or months when required, even if this is rarely done today for reasons of data privacy.

So much for standard applications. But the unique thing about GRUNDIG Security is the uncomplicated forensic search function of the GRUNDIG Video Management System powered by C-WERK®. This makes it possible for you to find the recordings that really interest you in a gigantic archive of video data, with no effort at all and in next to no time.

As an installer or end user of the new GRUNDIG products and solutions, what can you expect? Leaving our tried and tested reliability aside, you will also find a whole lot of image analysis functions, for the most part supported by artificial intelligence (AI). And there's a lot

of functionality available. You can use facial recognition, for instance, to recognise people, or the LPR function to identify vehicle licence plates. Or you can quite simply reduce the frequency of false alarms signalling a spurious break-in or perimeter breach, by classifying objects as 'vehicle', 'person' or 'other'.

Cameras from GRUNDIG Security can see whether your employees are wearing the mandatory helmets or protective gear. They can recognise faces in crowds of people, count heads and determine the length of queues at your supermarket till, so helping you to make the best possible use of your resources. What is more, they can even read body language. If a person shows an unusual or unnatural posture, an alarm will be triggered. So, you will be warned in good time, before your cash machine risks being blown sky-high.

These are just a few examples out of a plethora of possibilities, which the exceptionally flexible video surveillance systems from GRUNDIG Security are able to offer.

So, if you want more than just pretty pictures and long recording times, please get in touch — we'll be happy to hear from you!



# Content

## Cameras

Box/Cube/Turret	6
Fixed Domes	7
Bullet	9
Panoramic	12
PTZ Domes	13
Thermal Imaging	14

## Recorders

Standalone NVR	16
PC based NVR	18
Video Management Software C-WERK	20

## Hardware

Client/ Server PC	24
Switches	25

## HD Analogue

### Cameras

Box/Cube/Turret/fixed Domes	26
Bullet/PTZ Domes	27

### Recorders

Standalone HDVR	28
-----------------	----

## Monitors 30

## Accessories 32

## Lenses 38

## Controllers 38

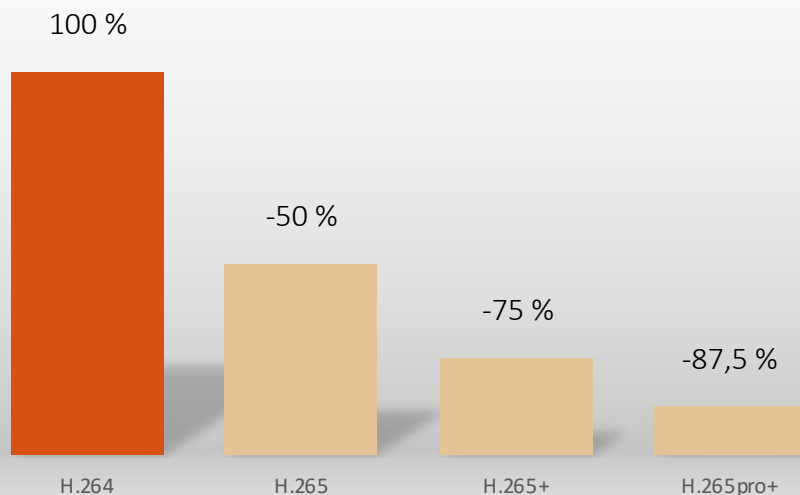


## 5 Years Extended Guarantee

Grundig has launched a new 5-year Guarantee on “PRO” and “PREMIUM” cameras to further support customers and make project maintenance easier and more cost-effective.

Grundig takes quality seriously and puts a lot of effort into ensuring our products are both innovative and reliable. To give customers greater peace of mind, the 5-year Guarantee will be added for pro premium product on electronic parts from 1 January 2021. Mechanical wear and tear on moving parts is not included. Please note our general delivery terms and conditions.

## 24 Hour Recording File Size



## H.265pro+

Ultra HD security cameras have been in production for a while but were not immediately adopted and widespread because they require excessive transmission bandwidth and enormous storage capacity. The problem can be solved by using H.265pro+ encoding technology, which uses an average of about 87.5 % of the bit rate of H.264. As the bit rate of the recorded video material is greatly reduced, the bandwidth and storage costs are also reduced. H.265pro+ is based on the standard format H.265/High Efficiency Video Coding (HEVC). With H.265pro+, the video quality is close to that of H.265/HEVC, but reduces the required transmission bandwidth and storage capacity due to three key technologies: predictive coding, noise reduction and flexible bit rate control. It shows significant improvements in bandwidth reduction, data storage efficiency and the analysis of video content.



## Many Grundig Recorders, Cameras and Video Management Software have deep Learning Analytics Functions

The rapid development of algorithms, neural networks, human-machine interfaces and computing power is now taking deep learning applications to a new level. Deep learning has also reached the security industry and enables a number of solutions, not only to improve the security of the company premises and to efficiently suppress unwanted alarms. The benefits of deep learning for attribute recognition and image classification make it extremely valuable in the security arena. It touches every aspect of the security industry — from face and vehicle recognition to behavior analysis. Deep learning is a type of machine learning that trains a computer to analyze human-like tasks like recognizing language, classifying images, recognizing objects, and even people's behavior. A real example are virtual assistants like Siri and Cortana, some of which are powered by artificial intelligence. Rather than organizing data to loop through predefined equations, deep learning sets basic parameters for the data and trains the computer to learn on its own by recognizing patterns using processing layers.

## Cybersecurity

Grundig Security supports internationally recognized cyber security standards and best practices. We make extensive efforts to improve the network security of our products and solutions. We continue to improve and use open and transparent methods so that users can evaluate the cybersecurity features of Grundig products. You can find more detailed information on IT security in our product data sheets and our „White Paper Cybersecurity“.



GD-CI-AP2605B



GD-CI-AT8505B



GD-CI-AP4617C



GD-CI-BC2615M



GD-CI-AC6614E



GD-CI-AP8617E



GD-CI-CP4637E

	Professional	Premium	Professional	Essential	Essential	Professional	Professional
Video Resolution	1920 x 1080	3840 x 2160	2688 x 1520	1920 x 1080	3200 x 1800	3840 x 2160	2688 x 1520
Sensitivity Colour	0.01 Lux @ F1.2 (AGC ON)	0.007 Lux @ F1.2 (AGC ON)	0.01 Lux @ F1.2 (AGC ON)	0.01 Lux @ F2.0 (AGC ON)	0.005 Lux @ F1.6 (AGC ON)	0.005 Lux @ F1.6 (AGC ON)	0.005 Lux @ F1.6 (AGC ON)
Lens Focal Length	—	—	2.8 mm	3.7 mm	2.8 mm	2.8 mm	2.8 ~ 12 mm motorized, auto-focus
Col/B&W	IR-cut filter removable (ICR)	IR-cut filter removable (ICR)	IR-cut filter removable (ICR)	—	IR-cut filter removable (ICR)	IR-cut filter removable (ICR)	IR-cut filter removable (ICR)
Wide Dynamic Range	120 dB	120 dB	120 dB	120 dB	120 dB	120 dB	120 dB
Image Enhancement	BLC, 3D DNR	BLC, 3D DNR, Defog, EIS, HLC	BLC, 3D DNR, HLC	BLC, 3D DNR, HLC	BLC, 3D DNR, HLC	BLC, 3D DNR, HLC	BLC, 3D DNR, HLC
Max. IR Distance	—	—	Up to 10 m	—	Up to 30 m	Up to 30 m	Up to 40 m
Video Compression	H.264, H.264+, H.265, H.265+, MJPEG	H.264, H.264+, H.265, H.265+, MJPEG	H.264, H.264+, H.265, H.265+, MJPEG	H.264, H.265, MJPEG	H.264, H.264+, H.265, H.265+, MJPEG	H.264, H.264+, H.265, H.265+, MJPEG	H.264, H.264+, H.265, H.265+, MJPEG
SD Memory	up to 128G, ANR Function	up to 256G, ANR Function	up to 128G, ANR Function	up to 256G, ANR Function	up to 256G, ANR Function	up to 256G, ANR Function	up to 256G, ANR Function
Video Outputs	1x CVBS (1 Vcc) BNC	1 CVBS Test Monitor output	—	1x CVBS (1 Vcc) BNC	—	—	1x CVBS (1 Vcc) BNC
Alarm Input/Output	yes	yes	—	yes	—	—	yes
Audio Input/Output	yes	yes	—	yes	—	Built-in microphone	yes
Intelligent Video Analytics	MD, PID, LCD, VTD	MD, PID, LCD, A-IN, A-OUT, SOD, FD, VTD, SD	MD, PID, LCD, FD, VTD	—	MD, VTD	MD, PID, LCD, FD, PD & VD, VTD	MD, PID, LCD, FD, PD & VD, VTD
Surge Protection	—	—	—	—	—	—	TVS 2000V
Operating Temperature	-30 °C ~ 60 °C (-22 °F ~ 140 °F)	-30 °C ~ 60 °C (-22 °F ~ 140 °F)	-10 °C ~ 50 °C (-14 °F ~ 122 °F)	-30 °C ~ +55 °C (-22 °F ~ 131 °F)	-30 °C ~ 60 °C (-22 °F ~ 140 °F)	-30 °C ~ 60 °C (-22 °F ~ 140 °F)	-30 °C ~ 60 °C (-22 °F ~ 140 °F)
Supply Voltage	12 VDC, 24 VAC, PoE (IEEE 802.3af)	12 VDC, 24 VAC, PoE (IEEE 802.3af)	12 VDC, PoE (IEEE 802.3af)	12 VDC ±10%	12 VDC, PoE (IEEE 802.3af)	12 VDC, PoE (IEEE 802.3af)	12 VDC, PoE (IEEE 802.3af)
Power Consumption	Max. 6 W	Max. 10 W	Max. 7 W	Max. 3 W	Max. 6.5 W	Max. 7.5 W	Max. 12,5 W





GD-CI-CC2616V



GD-CI-EC4617V



GD-CI-FC4617V



GD-CI-CC4637V



GD-CI-AP4617V

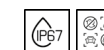


GD-CI-CP4617W



GD-CI-DP4617W

	Essential	Essential	Essential	Essential	Professional	Professional	Professional
Video Resolution	1920 x 1080	2560 x 1440	2560 x 1440	2560 x 1440	2688 x 1520	2688 x 1520	2688 x 1520
Sensitivity Colour	0.01 Lux @ F2.0 (AGC ON)	0.01 Lux @ F2.0 (AGC ON)	0.01 Lux @ F2.0 (AGC ON)	0.005 Lux @ F1.6 (AGC ON)	0.005 Lux @ F1.6 (AGC ON)	0.005 Lux @ F1.6 (AGC ON)	0.005 Lux @ F1.6 (AGC ON)
Lens Focal Length	2.8 mm	2.8 mm	4 mm	2.8 ~ 12 mm motorized, auto-focus	2.8 mm	2.8 mm	4 mm
Col/B&W	IR-cut filter removable (ICR)	IR-cut filter removable (ICR)	IR-cut filter removable (ICR)	IR-cut filter removable (ICR)	IR-cut filter removable (ICR)	IR-cut filter removable (ICR)	IR-cut filter removable (ICR)
Wide Dynamic Range	72 db (Digital Wide Dynamic Range)	120 dB	120 dB	120 dB	120 dB	120 dB	120 dB
Image Enhancement	BLC, 3D DNR	BLC, 3D DNR, HLC	BLC, 3D DNR, HLC	BLC, 3D DNR, HLC	BLC, 3D DNR, HLC	BLC, 3D DNR, HLC	BLC, 3D DNR, HLC
Max. IR Distance	Up to 30 m	Up to 30 m	Up to 30 m	Up to 30 m	Up to 30 m	Up to 30 m	Up to 30 m
Video Compression	H.264, H.264+, H.265, H.265+, MJPEG	H.264, H.264+, H.265, H.265+, MJPEG	H.264, H.264+, H.265, H.265+, MJPEG	H.264, H.264+, H.265, H.265+, MJPEG	H.264, H.264+, H.265, H.265+, MJPEG	H.264, H.264+, H.265, H.265+, MJPEG	H.264, H.264+, H.265, H.265+, MJPEG
SD Memory	—	—	—	up to 256G, ANR Function	up to 256G, ANR Function	up to 256G, ANR Function	up to 256G, ANR Function
Video Outputs	—	—	—	—	—	—	—
Alarm Input/Output	—	—	—	—	yes	yes	yes
Audio Input/Output	—	—	—	—	yes	yes	yes
Intelligent Video Analytics	MD, VTD	MD, VTD	MD, VTD	MD, VTD	MD, PID, LCD, FD, VTD	MD, PID, LCD, FD, PD & VD, VTD	MD, PID, LCD, FD, PD & VD, VTD
Surge Protection	—	—	—	—	TVS 2000V	—	—
Operating Temperature	-40 °C ~ 60 °C (-40 °F ~ 140 °F)	-30 °C ~ 60 °C (-22 °F ~ 140 °F)	-30 °C ~ 60 °C (-22 °F ~ 140 °F)	-30 °C ~ 60 °C (-22 °F ~ 140 °F)	-40 °C ~ 60 °C (-40 °F ~ 140 °F)	-30 °C ~ 60 °C (-22 °F ~ 140 °F)	-30 °C ~ 60 °C (-22 °F ~ 140 °F)
Supply Voltage	12 VDC, PoE (IEEE 802.3af)	12 VDC, PoE (IEEE 802.3af)	12 VDC, PoE (IEEE 802.3af)	12 VDC, PoE (IEEE 802.3af)	12 VDC, PoE (IEEE 802.3af)	12 VDC, PoE (IEEE 802.3af)	12 VDC, PoE (IEEE 802.3af)
Power Consumption	Max. 6.5 W	Max. 6.5 W	Max. 6.5 W	Max. 11.5 W	Max. 6.5 W	Max. 6.5 W	Max. 6.5 W





**GD-CI-AP2627V**

**GD-CI-CP4637V**

**GD-CI-AP6637V**

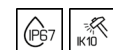
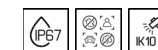
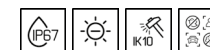
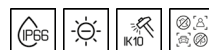
**GD-CI-BP8637V**

**GD-CI-BT4537VH**

**GD-CI-AT4634V**

**GD-CI-CT12617F**

	Professional	Professional	Professional	Professional	Premium	Premium	Premium
Video Resolution	1920 x 1080	2688 x 1520	3200 x 1800	3840 x 2160	2688 x 1520	2688 x 1520	3504 x 3504
Sensitivity Colour	0.005 Lux @ F1.2 (AGC ON)	0.003 Lux @ F1.4 (AGC ON)	0.001 Lux @ F1.2 (AGC on, shutter speed 1/25 s)	0.003 Lux @ F1.4 (AGC ON)	0.0014 Lux @ F1.4 (AGC ON)	0.001 Lux @ F1.2 (AGC on, shutter speed 1/25 s)	0.006 Lux
Lens Focal Length	2.8 ~ 12 mm motorized, autofocus	2.8 ~ 12 mm motorized, autofocus	2.8 ~ 12 mm motorized, autofocus	2.8 ~ 12 mm motorized, autofocus	2.8 ~ 12 mm motorized, autofocus	2.7 ~ 13.5 mm motorized, autofocus	1.29 mm
Col/B&W	IR-cut filter removable (ICR)	IR-cut filter removable (ICR)	IR-cut filter removable (ICR)	IR-cut filter removable (ICR)	IR-cut filter removable (ICR)	IR-cut filter removable (ICR)	IR-cut filter removable (ICR)
Wide Dynamic Range	120 dB	120 dB	120 dB	120 dB	140 dB	130 dB	Digital WDR
Image Enhancement	BLC, 3D DNR, HLC	BLC, 3D DNR, HLC, AWB, AGC, AES	BLC, 3D DNR, HLC	BLC, 3D DNR, HLC	BLC, 3D DNR, Defog, HLC	BLC, 3D DNR, Defog, HLC	BLC, 3D DNR, Defog, HLC
Max. IR Distance	Up to 30 m	Up to 40 m	Up to 40 m	Up to 40 m	Up to 40 m	Up to 40 m	Up to 15 m
Video Compression	H.264, H.264+, H.265, H.265+, MJPEG	H.264, H.264+, H.265, H.265+, MJPEG	H.264, H.264+, H.265, H.265+, MJPEG	H.264, H.264+, H.265, H.265+, MJPEG	H.264, H.264+, H.265, H.265+, MJPEG	H.264, H.264+, H.265, H.265+, MJPEG	H.264, H.264+, H.265, H.265+, MJPEG
SD Memory	up to 128G, ANR Function	up to 256G, ANR Function	up to 256G, ANR Function	up to 256G, ANR Function	up to 512G, ANR Function	up to 512G, ANR Function	up to 256G, ANR Function
Video Outputs	1 CVBS Test Monitor output	—	—	1 CVBS Test Monitor output	—	—	—
Alarm Input/Output	yes	yes	yes	yes	yes	yes	yes
Audio Input/Output	yes	yes	yes	yes	yes	yes	yes
Intelligent Video Analytics	MD, PID, LCD, SOD, FD, VTD	MD, VTD, AD	MD, PID, LCD, FD, PD & VD, VTD	MD, PID, LCD, A-IN, A-OUT, FD, PD & VD, VTD	MD, PID, LCD, A-IN, A-OUT, SOD, FD, PD & VD, VTD	MD, PID, LCD, A-IN, A-OUT, SOD, FD, PD & VD, VTD	MD, PID, LCD, A-IN, A-OUT, SOD, VTD
Surge Protection	TVS 2000V	—	—	TVS 2000V	TVS 2000V	TVS 2000V	—
Operating Temperature	-40 °C ~ 60 °C (-40 °F ~ 140 °F)	-30 °C ~ 60 °C (-22 °F ~ 140 °F)	-30 °C ~ 60 °C (-22 °F ~ 140 °F)	-30 °C ~ 60 °C (-22 °F ~ 140 °F)	-40 °C ~ 60 °C (-40 °F ~ 140 °F)	-30 °C ~ 60 °C (-22 °F ~ 140 °F)	-40 °C ~ 60 °C (-40 °F ~ 140 °F)
Supply Voltage	12 VDC, PoE (IEEE 802.3af)	12 VDC, PoE (IEEE 802.3af)	12 VDC, PoE (IEEE 802.3af)	12 VDC, PoE (IEEE 802.3af)	12 VDC, 24 VAC, PoE (IEEE 802.3af)	12 VDC, 24 VAC, PoE (IEEE 802.3af)	12 VDC, PoE (IEEE 802.3af)
Power Consumption	Max. 11 W	Max. 11 W	Max. 12,5 W	Max. 12,5 W	Max. 12,9 W	Max. 15 W	Max. 10 W







GD-CI-CC2616T



GD-CI-DC2616T



GD-CI-EC4617T



GD-CI-FC4617T



GD-CI-CC4637T

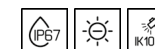


GD-CI-AP2627T



GD-CI-AP4617T

	Essential	Essential	Essential	Essential	Essential	Professional	Professional
Video Resolution	1920 x 1080	1920 x 1080	2560 x 1440	2560 x 1440	2560 x 1440	1920 x 1080	2688 x 1520
Sensitivity Colour	0.01 Lux @ F2.0 (AGC ON)	0.01 Lux @ F2.0 (AGC ON)	0.01 Lux @ F2.0 (AGC ON)	0.01 Lux @ F2.0 (AGC ON)	0.005 Lux @ F1.6 (AGC ON)	0.005 Lux @ F1.2 (AGC ON)	0.01 Lux @ F1.2 (AGC ON)
Lens Focal Length	2.8 mm	4 mm	2.8 mm	4 mm	2.8 ~ 12 mm motorized, auto-focus	2.8 ~ 12 mm motorized, auto-focus	4 mm
Col/B&W	IR-cut filter removable (ICR)	IR-cut filter removable (ICR)	IR-cut filter removable (ICR)	IR-cut filter removable (ICR)	IR-cut filter removable (ICR)	IR-cut filter removable (ICR)	IR-cut filter removable (ICR)
Wide Dynamic Range	72 db (Digital Wide Dynamic Range)	72 db (Digital Wide Dynamic Range)	120 dB	120 dB	120 dB	120 dB	120 dB
Image Enhancement	BLC, 3D DNR	BLC, 3D DNR	BLC, 3D DNR, HLC	BLC, 3D DNR, HLC	BLC, 3D DNR, HLC	BLC, 3D DNR, HLC	BLC, 3D DNR, HLC
Max. IR Distance	Up to 30 m	Up to 30 m	Up to 30 m	Up to 30 m	Up to 50 m	Up to 50 m	Up to 50 m
Video Compression	H.264, H.264+, H.265, H.265+, MJPEG	H.264, H.264+, H.265, H.265+, MJPEG	H.264, H.264+, H.265, H.265+, MJPEG	H.264, H.264+, H.265, H.265+, MJPEG	H.264, H.264+, H.265, H.265+, MJPEG	H.264, H.264+, H.265, H.265+, MJPEG	H.264, H.264+, H.265, H.265+, MJPEG
SD Memory	—	—	—	—	up to 256G	up to 128G, ANR Function	up to 128G, ANR Function
Video Outputs	—	—	—	—	—	1 CVBS Test Monitor output	—
Alarm Input/Output	—	—	—	—	—	yes	—
Audio Input/Output	—	—	—	—	—	yes	—
Intelligent Video Analytics	MD, VTD	MD, VTD	MD, VTD	MD, VTD	MD, VTD	MD, PID, LCD, SOD, FD, VTD	MD, PID, LCD, FD, VTD
Surge Protection	—	—	—	—	—	TVS 2000V	TVS 2000V
Operating Temperature	-40 °C ~ 60 °C (-40 °F ~ 140 °F)	-40 °C ~ 60 °C (-40 °F ~ 140 °F)	-30 °C ~ 60 °C (-22 °F ~ 140 °F)	-30 °C ~ 60 °C (-22 °F ~ 140 °F)	-30 °C ~ 60 °C (-22 °F ~ 140 °F)	-40 °C ~ 60 °C (-40 °F ~ 140 °F)	-30 °C ~ 60 °C (-22 °F ~ 140 °F)
Supply Voltage	12 VDC, PoE (IEEE 802.3af)	12 VDC, PoE (IEEE 802.3af)	12 VDC, PoE (IEEE 802.3af)	12 VDC, PoE (IEEE 802.3af)	12 VDC, PoE (IEEE 802.3af)	12 VDC, PoE (IEEE 802.3at)	12 VDC, PoE (IEEE 802.3af)
Power Consumption	Max. 6.5 W	Max. 6.5 W	Max. 6.5 W	Max. 6.5 W	Max. 12,9 W	Max. 17 W	Max. 9.5 W





GD-CI-AP4637T



GD-CI-AP6637T



GD-CI-BP8637T



GD-CI-CT4537TH



GD-CI-DT4637T



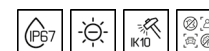
GD-CI-ET4637T

	Professional	Professional	Professional	Premium	Premium	Premium
Video Resolution	2560 x 1440	3200 x 1800	3840 x 2160	2688 x 1520	2688 x 1520	2688 x 1520
Sensitivity Colour	0.003 Lux @ F1.4 (AGC ON)	0.005 Lux @ F1.6 (AGC ON)	0.003 Lux @ F1.4 (AGC ON)	0.0014 Lux @ F1.4 (AGC ON)	0.0005 Lux @ F1.2 (AGC ON)	0.0005 Lux @ F1.2 (AGC ON)
Lens Focal Length	2.8 ~ 12 mm motorized, autofocus	2.8 ~ 12 mm motorized, autofocus	2.8 ~ 12 mm motorized, autofocus	2.8 ~ 12 mm motorized, autofocus	2.8 ~ 12 mm motorized, autofocus	8 ~ 32 mm motorized, autofocus
Col/B&W	IR-cut filter removable (ICR)	IR-cut filter removable (ICR)	IR-cut filter removable (ICR)	IR-cut filter removable (ICR)	IR-cut filter removable (ICR)	IR-cut filter removable (ICR)
Wide Dynamic Range	120 dB	120 dB	120 dB	140 dB	140 dB	140 dB
Image Enhancement	BLC, 3D DNR, HLC	BLC, 3D DNR, HLC	BLC, 3D DNR, HLC	BLC, 3D DNR, Defog, HLC	BLC, 3D DNR, Defog, EIS, HLC	BLC, 3D DNR, Defog, EIS, HLC
Max. IR Distance	Up to 60 m	Up to 60 m	Up to 60 m	Up to 60 m	Up to 50 m	Up to 100 m
Video Compression	H.264, H.264+, H.265, H.265+, MJPEG	H.264, H.264+, H.265, H.265+, MJPEG	H.264, H.264+, H.265, H.265+, MJPEG	H.264, H.264+, H.265, H.265+, MJPEG	H.264, H.264+, H.265, H.265+, MJPEG	H.264, H.264+, H.265, H.265+, MJPEG
SD Memory	up to 256G, ANR Function	up to 256G, ANR Function	up to 256G, ANR Function	up to 512G, ANR Function	up to 1T, ANR Function	up to 1T, ANR Function
Video Outputs	—	—	—	—	1 CVBS Test Monitor output	1 CVBS Test Monitor output
Alarm Input/Output	yes	yes	yes	yes	yes	yes
Audio Input/Output	yes	yes	yes	yes	—	—
Intelligent Video Analytics	MD, PID, LCD, A-IN, A-OUT, FD, PD & VD, VTD	MD, PID, LCD, FD, PD & VD, VTD	MD, PID, LCD, A-IN, A-OUT, FD, PD & VD, VTD	MD, PID, LCD, A-IN, A-OUT, SOD, FD, PD & VD, VTD	MD, PID, LCD, A-IN, A-OUT, SOD, FD, VTD, LPR	MD, PID, LCD, A-IN, A-OUT, SOD, FD, VTD, LPR
Surge Protection	TVS 2000V	—	TVS 2000V	TVS 2000V	—	—
Operating Temperature	-30 °C ~ 60 °C (-22 °F ~ 140 °F)	-30 °C ~ 60 °C (-22 °F ~ 140 °F)	-30 °C ~ 60 °C (-22 °F ~ 140 °F)	-40 °C ~ 60 °C (-40 °F ~ 140 °F)	-40 °C ~ 60 °C (-40 °F ~ 140 °F)	-40 °C ~ 60 °C (-40 °F ~ 140 °F)
Supply Voltage	12 VDC, PoE (IEEE 802.3at)	12 VDC, PoE (IEEE 802.3at)	12 VDC, PoE (IEEE 802.3at)	12 VDC, 24 VAC, PoE (IEEE 802.3at)	12 VDC, PoE (IEEE 802.3at)	12 VDC, PoE (IEEE 802.3at)
Power Consumption	Max. 15 W	Max. 15 W	Max. 15 W	Max. 18 W	Max. 17 W	Max. 17 W



**GD-CI-ET4537TH****GD-CI-AT4634T****GD-CI-CT4537T****GD-CI-CT8637T****GD-CI-BT8537TH****GD-CI-AT12637T**

	Premium	Premium	Premium	Premium	Premium	Premium
Video Resolution	2688 × 1520	2688 × 1520	2688 × 1520	3840 × 2160	3840 × 2160	4000 × 3000
Sensitivity Colour	0.0014 Lux @ F1.4 (AGC ON)	0.001 Lux @ F1.2 (AGC on, shutter speed 1/25 s)	0.009 Lux @ F1.6 (AGC ON)	0.002 Lux @ F1.2 (AGC ON)	0.004 Lux @ F1.2 (AGC ON)	0.009 Lux @ F1.2 (AGC ON)
Lens Focal Length	8 ~ 32 mm motorized, autofocus	2.7 ~ 13.5 mm motorized, autofocus	4.7 ~ 118 mm motorized, autofocus	8 ~ 32 mm motorized, autofocus	2.8 ~ 12 mm motorized, autofocus	8 ~ 32 mm motorized, autofocus
Col/B&W	IR-cut filter removable (ICR)	IR-cut filter removable (ICR)	IR-cut filter removable (ICR)	IR-cut filter removable (ICR)	IR-cut filter removable (ICR)	IR-cut filter removable (ICR)
Wide Dynamic Range	140 dB	130 dB	140 dB	120 dB	120 dB	Digital WDR
Image Enhancement	BLC, 3D DNR, Defog, HLC	BLC, 3D DNR, Defog, HLC	BLC, 3D DNR, Defog, EIS, HLC	BLC, 3D DNR, Defog, EIS, HLC	BLC, 3D DNR, HLC	BLC, 3D DNR, Defog, EIS, HLC, Distortion Correction
Max. IR Distance	Up to 60 m	Up to 60 m	Up to 200m	Up to 100 m	Up to 60 m	Up to 100 m
Video Compression	H.264, H.264+, H.265, H.265+, MJPEG	H.264, H.264+, H.265, H.265+, MJPEG	H.264, H.264+, H.265, H.265+, MJPEG	H.264, H.264+, H.265, H.265+, MJPEG	H.264, H.264+, H.265, H.265+, MJPEG	H.264, H.264+, H.265, H.265+, MJPEG
SD Memory	up to 512G, ANR Function	up to 512G, ANR Function	up to 256G, ANR Function	up to 256G, ANR Function	up to 256G, ANR Function	up to 256G, ANR Function
Video Outputs	—	—	—	1 CVBS Test Monitor output	—	1 CVBS Test Monitor output
Alarm Input/Output	yes	yes	yes	yes	yes	yes
Audio Input/Output	yes	yes	yes	—	yes	—
Intelligent Video Analytics	MD, PID, LCD, A-IN, A-OUT, SOD, FD, PD & VD, VTD	MD, PID, LCD, A-IN, A-OUT, SOD, FD, PD & VD, VTD	MD, PID, LCD, A-IN, A-OUT, FR, VTD, PD & VD, SD, AD	—	MD, PID, LCD, A-IN, A-OUT	MD, PID, PD & VD, FR, QD, CC, AD
Surge Protection	TVS 2000V	TVS 2000V	TVS 4000V	—	TVS 2000V	—
Operating Temperature	-40 °C ~ 60 °C (-40 °F ~ 140 °F)	-40 °C ~ 60 °C (-40 °F ~ 140 °F)	-40 °C ~ 60 °C (-40 °F ~ 140 °F)	-40 °C ~ 60 °C (-40 °F ~ 140 °F)	-40 °C ~ 60 °C (-40 °F ~ 140 °F)	-40 °C ~ 60 °C (-40 °F ~ 140 °F)
Supply Voltage	12 VDC, 24 VAC, PoE (IEEE 802.3at)	12 VDC, 24 VAC, PoE (IEEE 802.3at)	12 VDC, 24 VAC, PoE (IEEE 802.3at)	12 VDC, PoE (IEEE 802.3at)	12 VDC, 24 VAC, PoE (IEEE 802.3at)	12 VDC, PoE (IEEE 802.3at)
Power Consumption	Max. 18 W	Max. 15 W	Max. 12 W	Max. 18 W	Max. 15 W	Max. 18 W





GD-CI-AT30516Q



GD-CI-AT20527Q

	Premium	Premium
Video Resolution	8160 x 3616	2560 x 1920
Sensitivity Colour	0.009 Lux @ F1.2 (AGC ON)	0.006 Lux @ F1.2 (AGC ON)
Lens Focal Length	4 x 3 mm	4 x movable lenses 2.8 ~ 12 mm motorized, autofocus
Col/B&W	IR-cut filter removable (ICR)	IR-cut filter removable (ICR)
Wide Dynamic Range	Digital WDR	120 dB
Image Enhancement	BLC, 3D DNR, Defog, EIS, HLC	BLC, 3D DNR, EIS, HLC
Max. IR Distance	Up to 20 m	Up to 30 m
Video Compression	H.264, H.264+, H.265, H.265+, MJPEG	H.264, H.264+, H.265, H.265+, MJPEG
SD Memory	up to 128G, ANR Function	up to 128G, ANR Function
Video Outputs	—	—
Alarm Input/Output	yes	yes
Audio Input/Output	yes	yes
Intelligent Video Analytics	PID, LCD, VTD	MD, PID, LCD, A-IN, A-OUT, SOD, FD, VTD, SD
Surge Protection	—	—
Operating Temperature	-40 °C ~ 60 °C (-40 °F ~ 140 °F)	-30 °C ~ 60 °C (-22 °F ~ 140 °F)
Supply Voltage	24 VAC, PoE+ (IEEE 802.3at)	12 VDC, 24 VAC, PoE (IEEE 802.3bt)
Power Consumption	Max. 25 W	Max. 34 W



## DEWARP

Dewarping is used to equalize an all-around image of a „fisheye camera“. With dewarping, the respectively selected image area is converted for the viewer in the respective dimensions and the selected viewing angle — and thus equalized. You control the view like a pan / tilt camera or you can view the scene in several windows in a panoramic view.

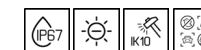
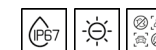
The Dewarp function is also supported from the GRUNDIG NVRs of the Pro-and Premium-series.

GD-CI-BT12617F with Immervision® panomorph optical design outperforms all competing technologies.



**GD-CI-AC4637P****GD-CI-CP2647P****GD-CI-CP2747P****GD-CI-AP4647P****GD-CI-AP4747P****GD-CI-CT4747P****GD-CI-BT4747P****GD-CI-AT8747P**

	Essential	Professional	Professional	Professional	Professional	Premium	Premium	Premium
Image Sensor	1/2.8" progressive Scan CMOS	1/2.8" progressive Scan CMOS	1/2.8" progressive Scan CMOS	1/2.8" progressive Scan CMOS	1/1.8" progressive Scan CMOS	1/1.8" progressive Scan CMOS	1/1.8" progressive Scan CMOS	1/1.8" progressive Scan CMOS
Video Resolution	2560 x 1440	1920 x 1080	1920 x 1080	2560 x 1440	2560 x 1440	2560 x 1440	2688 x 1520	3840 x 2160
Sensitivity Colour	0.005 Lux @ F1.5 (AGC ON)	0.005 Lux @ F1.6 (AGC ON)	0.005 Lux @ F1.6 (AGC ON)	0.005 Lux @ F1.6 (AGC ON)	0.005 Lux @ F1.5 (AGC ON)	0.001 Lux @ F1.2 (AGC ON)	0.001 Lux @ F1.2 (AGC ON)	0.005 Lux
Lens Focal Length	2.8 ~ 12 mm motorized, autofocus	4.8 ~ 120 mm motorized, autofocus	4.8 ~ 153 mm motorized, autofocus	4.8 ~ 120 mm motorized, autofocus	5.9 ~ 188.8 mm motorized, autofocus	6.0 ~ 252 mm, 42x Optical Zoom	6.0 ~ 252 mm, 42x Optical Zoom	6.0 ~ 252 mm, 42x Optical Zoom
Optical Zoom Ratio	4x	25x	32x	25x	32x	42x	42x	42x
Col/B&W	Removable IR-Cut Filter (ICR)	Removable IR-Cut Filter (ICR)	Removable IR-Cut Filter (ICR)	Removable IR-Cut Filter (ICR)	Removable IR-Cut Filter (ICR)	Removable IR-Cut Filter (ICR)	Removable IR-Cut Filter (ICR)	Removable IR-Cut Filter (ICR)
Number of Privacy Zones	24 programmable zones	24 programmable zones	24 programmable zones	24 programmable zones	24 programmable zones	24 programmable zones	24 programmable zones	24 programmable zones
Image Enhancement	BLC, 3D DNR, Defog, HLC	BLC, 3D DNR, Defog, HLC, AGC, Regional Exposure, Regional Focus	BLC, 3D DNR, Defog, EIS, HLC, AGC, Regional Exposure, Regional Focus	BLC, 3D DNR, Defog, EIS, HLC, AGC, Regional Exposure, Regional Focus	BLC, 3D DNR, Defog, EIS, HLC, AGC, Regional Exposure, Regional Focus	BLC, 3D DNR, Defog, EIS, HLC, AGC, Regional Exposure, Regional Focus, Rapid Focus	BLC, 3D DNR, Defog, EIS, HLC, AGC, Regional Exposure, Regional Focus	BLC, 3D DNR, Defog, EIS, HLC, AGC, Regional Exposure, Regional Focus, Rapid Focus
Max. IR Distance	Up to 20 m	Up to 50 m	Up to 200m	Up to 100 m	Up to 200m	Up to 400m	Up to 400m	Up to 500m
SD Memory	up to 256G, ANR Function	up to 256G, ANR Function	up to 256G, ANR Function	up to 256G, ANR Function	up to 256G, ANR Function	up to 256G, ANR Function	up to 256G, ANR Function	up to 256G, ANR Function
Video Outputs	—	—	—	—	—	1x CVBS (1 Vcc) BNC	1x CVBS (1 Vcc) BNC	1x CVBS (1 Vcc) BNC
Alarm Input/Output	—	yes	yes	yes	yes	yes	yes	yes
Audio Input/Output	yes	yes	yes	yes	yes	yes	yes	yes
Surge Protection	TVS 4000V	TVS 6000V	TVS 6000V	TVS 6000V	TVS 6000V	TVS 6000V	TVS 6000V	TVS 6000V
Operating Temperature	-20 °C ~ 60 °C (-4 °F ~ 140 °F)	-30 °C ~ +65 °C (-22 °F ~ 149 °F)	-40 °C ~ 65 °C (-40 °F ~ 149 °F)	-30 °C ~ +65 °C (-22 °F ~ 149 °F)	-30 °C ~ +65 °C (-22 °F ~ 149 °F)	-40 °C ~ 70 °C (-40 °F ~ 158 °F)	-40 °C ~ 70 °C (-40 °F ~ 158 °F)	-40 °C ~ 70 °C (-40 °F ~ 158 °F)
Supply Voltage	12 VDC, PoE (IEEE 802.3af)	12 VDC, PoE (IEEE 802.3at)	24 VAC, Hi-PoE (IEEE 802.3bt)	12 VDC, PoE (IEEE 802.3at)	24 VAC, Hi-PoE (IEEE 802.3bt)	24 VAC, Hi-PoE (IEEE 802.3bt)	24 VAC, Hi-PoE (IEEE 802.3bt)	24 VAC, Hi-PoE (IEEE 802.3bt)
Power Consumption	Max. 12 W	Max. 24 W	Max. 42 W	Max. 18 W	Max. 42 W	Max. 60W	Max. 60W	Max. 60W
Power Consumption	Max. 12 W	Max. 18 W	Max. 42 W	Max. 18 W	Max. 42 W	Max. 60W	Max. 60W	Max. 60W





**GD-TI-AP1614V**

**GD-TI-BP1603V**

**GD-TI-BP1603T**

**GD-TI-BP1606T**

**GD-TI-BP1610T**

**GD-TI-AP4503T**

**GD-TI-AP4507T**

	Professional	Professional	Professional	Professional	Professional	Professional	Professional
Thermal Sensor	Vanadium Oxide Uncooled Focal Plane Array	Vanadium Oxide Uncooled Focal Plane Array	Vanadium Oxide Uncooled Focal Plane Array	Vanadium Oxide Uncooled Focal Plane Array	Vanadium Oxide Uncooled Focal Plane Array	Vanadium Oxide Uncooled Focal Plane Array	Vanadium Oxide Uncooled Focal Plane Array
Resolution (Thermal)	160 x 120	160 x 120	160 x 120	160 x 120	160 x 120	256 x 192	256 x 192
NETD	< 40 mk (@25° C, F=1.0)	< 40 mk (@25° C, F=1.0)	< 40 mk (@25° C, F=1.0)	< 40 mk (@25° C, F=1.0)	< 40 mk (@25° C, F=1.0)	< 40 mk (@25° C, F=1.0)	< 40 mk (@25° C, F=1.0)
Viewing Angle (IR)	90° x 66.4° (HxV)	50° x 37.2° (HxV)	50° x 37.2° (HxV)	25° x 18.7° (HxV)	15.96° x 12° (HxV)	50° x 37.2° (HxV)	24.5° x 18.5° (HxV)
Detector Pitch	17 µm	17 µm	17 µm	17 µm	17 µm	12 µm	12 µm
Image Sensor	1/2.7" progressive Scan CMOS	1/2.7" progressive Scan CMOS	1/2.7" progressive Scan CMOS	1/2.7" progressive Scan CMOS	1/2.7" progressive Scan CMOS	1/2.7" progressive Scan CMOS	1/2.7" progressive Scan CMOS
Video Resolution	2688 x 1520	2688 x 1520	2688 x 1520	2688 x 1520	2688 x 1520	2688 x 1520	2688 x 1520
Sensitivity Colour	0.0176 Lux @ F2.25 (AGC ON)	0.0176 Lux @ F2.25 (AGC ON)	0.0176 Lux @ F2.25 (AGC ON)	0.0176 Lux @ F2.25 (AGC ON)	0.0176 Lux @ F2.25 (AGC ON)	0.0089Lux @ F1.6 (AGC ON)	0.0089Lux @ F1.6 (AGC ON)
Lens Focal Length	2.1 mm	4 mm	4 mm	8 mm	8 mm	4.3 mm	6.4 mm
Video Compression	H.264, H.265, MJPEG	H.264, H.265, MJPEG	H.264, H.265, MJPEG	H.264, H.265, MJPEG	H.264, H.265, MJPEG	H.264, H.265, MJPEG	H.264, H.265, MJPEG
Accuracy	± 8°C	± 8°C	± 8°C	± 8°C	± 8°C	± 8°C	± 8°C
Measurement option	Support 3 temperature measurement rule types, 21 rules (10 points, 10 regions and 1 line)	Support 3 temperature measurement rule types, 21 rules (10 points, 10 regions and 1 line)	Support 3 temperature measurement rule types, 21 rules (10 points, 10 regions and 1 line)	Support 3 temperature measurement rule types, 21 rules (10 points, 10 regions and 1 line)	Support 3 temperature measurement rule types, 21 rules (10 points, 10 regions and 1 line)	Support 3 temperature measurement rule types, 21 rules (10 points, 10 regions and 1 line)	Support 3 temperature measurement rule types, 21 rules (10 points, 10 regions and 1 line)
Intelligent Video Analytics	PID, LCD, A-IN, A-OUT, PD & VD, Smoke	PID, LCD, A-IN, A-OUT, PD & VD, Smoke	PID, LCD, A-IN, A-OUT, PD & VD, Smoke	PID, LCD, A-IN, A-OUT, PD & VD, Smoke	PID, LCD, A-IN, A-OUT, PD & VD, Smoke	PID, LCD, A-IN, A-OUT, PD & VD, Smoke	PID, LCD, A-IN, A-OUT, PD & VD, Smoke
Operating Temperature	-40 °C ~ 65 °C (-40 °F ~ 149 °F)	-40 °C ~ 65 °C (-40 °F ~ 149 °F)	-40 °C ~ 65 °C (-40 °F ~ 149 °F)	-40 °C ~ 65 °C (-40 °F ~ 149 °F)	-40 °C ~ 65 °C (-40 °F ~ 149 °F)	-40 °C ~ 65 °C (-40 °F ~ 149 °F)	-40 °C ~ 65 °C (-40 °F ~ 149 °F)
Supply Voltage	12 VDC, PoE (IEEE 802.3af)	12 VDC, PoE (IEEE 802.3af)	12 VDC, PoE (IEEE 802.3af)	12 VDC, PoE (IEEE 802.3af)	12 VDC, PoE (IEEE 802.3af)	12 VDC, 24 VAC, PoE (IEEE 802.3af)	12 VDC, 24 VAC, PoE (IEEE 802.3af)
Power Consumption	Max. 6 W	Max. 6 W	Max. 6.5 W	Max. 6.5 W	Max. 6.5 W	Max. 8.2 W	Max. 8.2 W



**GD-TI-AP4510T****GD-TI-AT2604T****GD-TI-AT2607T****GD-TI-AT2610T****GD-TI-CT2510T****GD-TI-AT3607T****GD-TI-AT3625T**

	Professional	Premium	Premium	Premium	Premium	Premium	Premium
Thermal Sensor	Vanadium Oxide Uncooled Focal Plane Array	Vanadium Oxide Uncooled Focal Plane Array	Vanadium Oxide Uncooled Focal Plane Array	Vanadium Oxide Uncooled Focal Plane Array	Vanadium Oxide Uncooled Focal Plane Array	Vanadium Oxide Uncooled Focal Plane Array	Vanadium Oxide Uncooled Focal Plane Array
Resolution (Thermal)	256 x 192	384 x 288	384 x 288	384 x 288	384 x 288	640 x 512	640 x 512
NETD	< 40 mk (@25° C, F=1.0)	< 35 mk (@25° C, F=1.0)	< 35 mk (@25° C, F=1.0)	< 35 mk (@25° C, F=1.0)	< 35 mk (@25° C, F=1.0)	< 35 mk (@25° C, F=1.0)	< 35 mk (@25° C, F=1.0)
Viewing Angle (IR)	18° x 13.5° (HxV)	60° x 44.1° (HxV)	42° x 32° (HxV)	26° x 20° (HxV)	37.5° x 28.5° (HxV)	88,5° x 73,2° (HxV)	24.5° x 18.5° (HxV)
Detector Pitch	12 µm	12 µm	12 µm	12 µm	17 µm	17 µm	17 µm
Image Sensor	1/2.7" progressive Scan CMOS	—	—	—	1/2.7" progressive Scan CMOS	—	—
Video Resolution	2688 x 1520	—	—	—	2688 x 1520	—	—
Sensitivity Colour	0.0089Lux @ F1.6 (AGC ON)	—	—	—	0.0089Lux @ F1.6 (AGC ON)	—	—
Lens Focal Length	8 mm	—	—	—	4 mm	—	—
Video Compression	H.264, H.265, MJPEG	H.264, H.265, MJPEG	H.264, H.265, MJPEG	H.264, H.265, MJPEG	H.264, H.265, MJPEG	H.264, H.265, MJPEG	H.264, H.265, MJPEG
Accuracy	± 8°C	± 8°C	± 8°C	± 8°C	± 8°C	± 8°C	± 8°C
Measurement option	Support 3 temperature measurement rule types, 21 rules (10 points, 10 regions and 1 line)	Support 3 temperature measurement rule types, 21 rules (10 points, 10 regions and 1 line)	Support 3 temperature measurement rule types, 21 rules (10 points, 10 regions and 1 line)	Support 3 temperature measurement rule types, 21 rules (10 points, 10 regions and 1 line)	Support 3 temperature measurement rule types, 21 rules (10 points, 10 regions and 1 line)	Support 3 temperature measurement rule types, 21 rules (10 points, 10 regions and 1 line)	Support 3 temperature measurement rule types, 21 rules (10 points, 10 regions and 1 line)
Intelligent Video Analytics	PID, LCD, A-IN, A-OUT, PD & VD, Smoke	PID, LCD, A-IN, A-OUT, PD & VD, Smoke	PID, LCD, A-IN, A-OUT, PD & VD, Smoke	PID, LCD, A-IN, A-OUT, PD & VD, Smoke	PID, LCD, A-IN, A-OUT, PD & VD, Smoke	PID, LCD, A-IN, A-OUT, PD & VD, Smoke	PID, LCD, A-IN, A-OUT, PD & VD, Smoke
Operating Temperature	-40 °C ~ 65 °C (-40 °F ~ 149 °F)	-40 °C ~ 65 °C (-40 °F ~ 149 °F)	-40 °C ~ 65 °C (-40 °F ~ 149 °F)	-40 °C ~ 65 °C (-40 °F ~ 149 °F)	-40 °C ~ 65 °C (-40 °F ~ 149 °F)	-40 °C ~ 65 °C (-40 °F ~ 149 °F)	-40 °C ~ 65 °C (-40 °F ~ 149 °F)
Supply Voltage	12 VDC, 24 VAC, PoE (IEEE 802.3af)	12 VDC, 24 VAC, PoE (IEEE 802.3af)	12 VDC, 24 VAC, PoE (IEEE 802.3af)	12 VDC, 24 VAC, PoE (IEEE 802.3af)	12 VDC, 24 VAC, PoE (IEEE 802.3af)	12 VDC, PoE (IEEE 802.3af)	12 VDC, PoE (IEEE 802.3af)
Power Consumption	Max. 8.2 W	Max. 5.5 W	Max. 5 W	Max. 5.5 W	Max. 9.5 W	Max. 5 W	Max. 5 W





**GD-RN-BC2004P**

**GD-RN-BC2416N**

**GD-RN-BC2416P**

**GD-RN-BP8616P**

**GD-RN-BP8632N**

	Essential	Essential	Essential	Professional	Professional
Recorders   IP   Standalone NVR	4 channels	16 channels	16 channels	16 channels	32 channels
Recording Bandwidth	max. 40 Mbps	160 Mbps	160 Mbps	160 Mbps	256 Mbps
Outgoing Bandwidth	80 Mbps	max. 160 Mbps	max. 160 Mbps	256 Mbps	256 Mbps
Recording Resolution	Max. 12 MP	Max. 12 MP	Max. 12 MP	Max. 32 MP	Max. 32 MP
Video Compression	H.264, H.264+, H.265, H.265+	H.264, H.264+, H.265, H.265+	H.264, H.264+, H.265, H.265+	H.264, H.264+, H.265, H.265+	H.264, H.264+, H.265, H.265+
Recording Mode	Continuous, Event Alarm, Motion, Video Loss, Schedule	Continuous, Event Alarm, Motion, Video Loss, Schedule	Continuous, Event Alarm, Motion, Video Loss, Schedule	Continuous, Event Alarm, Motion, Video Loss, Schedule	Continuous, Event Alarm, Motion, Video Loss, Schedule
Search Mode	Date, Time, Event Alarm, Motion, Search Backup	Date, Time, Event Alarm, Motion, Search Backup	Date, Time, Event Alarm, Motion, Search Backup	Date, Time, Event Alarm, Motion, Search Backup	Date, Time, Event Alarm, Motion, Search Backup
External Backup	USB HDD, USB Memory, DVD-R, Network	USB HDD, USB Memory, DVD-R, Network	USB HDD, USB Memory, DVD-R, Network	USB HDD, USB Memory, USB DVD-R, Network	USB HDD, USB Memory, USB DVD-R, Network
HDMI Output	4K (3840x2160)	4K (3840x2160)	4K (3840x2160)	4K (3840x2160)	4K (3840x2160)
Harddisk bay	1 x SATA III	2 x SATA	2 x SATA	4 x SATA III, 1 x eSATA	4 x SATA III, 1 x eSATA
Max. Storage Capacity	Up to 10TB capacity for each HDD (not mandatory)	Up to 10TB capacity for each HDD	Up to 10TB capacity for each HDD	Up to 10TB capacity for each HDD, max 40TB in total	Up to 10TB capacity for each HDD, max 40TB in total
Disk Array type	—	—	—	1-ch, RCA (2.0 Vp-p, 1kΩ)	1-ch, RCA (2.0 Vp-p, 1kΩ)
Audio Inputs	—	4 contact input N/O or N/C	4 contact input N/O or N/C	16 contact input N/O or N/C	16 contact input N/O or N/C
Alarm Inputs	—	1	1	9	9
Alarm Outputs	4 independent 10, 100 Mbps PoE Ethernet interfaces	—	16 independent 10, 100 Mbps PoE Ethernet interfaces	16 independent 10, 100 Mbps PoE Ethernet interfaces	—
Power over Ethernet	—	—	—	19-inch rack-mounted, 1.5U	19-inch rack-mounted, 1.5U
Chassis	48 VDC, Power Adapter 100 ~ 240 VAC 50, 60Hz included	100 ~ 240 VAC, 50Hz / 60Hz	100 ~ 240 VAC, 50Hz / 60Hz	100 ~ 240 VAC, 50Hz / 60Hz	100 ~ 240 VAC, 50Hz / 60Hz
Supply Voltage	≤ 10 W without harddisk and PoE off	≤ 15 W without harddisk	≤ 15 W without harddisk and PoE off	≤ 30W without hard disks	≤ 30W without hard disks







**GD-RN-CT8832N**

**GD-RN-AT819128N**

	Premium	Premium
Recorders   IP   Standalone NVR	32 channels	128 channels
Recording Bandwidth	320Mbps or 200Mbps (when RAID is enabled)	576 Mbps
Outgoing Bandwidth	256 Mbps or 200 Mbp (when RAID is enabled)	512 Mbps
Recording Resolution	Max. 12 MP	Max. 12 MP
Video Compression	H.264, H.264+, H.265, H.265+, MPEG4	H.264, H.264+, H.265, H.265+, MPEG4
Recording Mode	Continuous, Event Alarm, Motion, Video Loss, Schedule	Continuous, Event Alarm, Motion, Video Loss, Schedule
Search Mode	Date, Time, Event Alarm, Motion, Search Backup	Date, Time, Event Alarm, Motion, Search Backup
External Backup	USB HDD, USB Memory, USB DVD-R, Network	USB HDD, USB Memory, USB DVD-R, Network
HDMI Output	HDMI1: 4K (3840 × 2160) HDMI2: 1920 × 1080p	HDMI1: 4K (3840 × 2160) HDMI2: 1920 × 1080p
Harddisk bay	8 x SATA III	16 x SATA III, 1 x e-SATA
Max. Storage Capacity	Up to 10TB capacity for each HDD	Up to 10TB capacity for each HDD
Disk Array type	1-ch, RCA (2.0 Vp-p, 1kΩ)	1-ch, RCA (2.0 Vp-p, 1kΩ)
Audio Inputs	16 contact input N/O or N/C	16 contact input N/O or N/C
Alarm Inputs	4	8
Alarm Outputs	—	—
Power over Ethernet	19-inch rack-mounted, 2U	19-inch rack-mounted, 3U
Chassis	2 x 100 ~ 240 VAC, 50Hz / 60Hz redundant power supply	2 x 100 ~ 240 VAC, 50Hz / 60Hz redundant power supply
Supply Voltage	Max. 550 W, 30W without harddisk	Max. 500 W, 140 W without harddisk

## GRUNDIG ANALYTICS

Embedded video analytics and intelligence can greatly improve the efficiency of your security personnel and offer insights to improve operations.

Protect your premises and gain business intelligence into traffic patterns and trends. Count objects, cars or people entering and exiting a specific area to determine the proper staffing needed during peak traffic times. Automatically monitor areas where no objects or people are to be present and alert for instant action to be taken.



Scan QR Code  
for video example

**Line Crossing Detection.** Cross a pre-defined virtual line.

**Intrusion Detection.** Enter and loiter in a pre-defined virtual region.

**Region Entrance.** Enter a pre-defined virtual region from the outside place.

**Region Exiting.** Exit from a pre-defined virtual region.

**Object (People) Counting.**

**Unattended Baggage and Object Removal.** Objects left over in the pre-defined region such as the baggage, purse, dangerous materials. Video verification and real-time alerts when objects have been placed or removed from a field of view.

**Heat Map.** Graphical representation of density of visit in a configured area. Easily identify traffic patterns and trends to improve product placement, promotional graphics and staffing.

**Face Detection.** Human face appears in the image can be detected and trigger linkage method.



**GD-RX-AP1416R**

**GD-RX-AP2424R**

**GD-RX-AP2432R**

**GD-RX-AP3448R**

**GD-RX-AP2464R**

**GD-RX-AP2496R**

	Professional	Professional	Professional	Professional	Professional	Professional
<b>Number of cameras</b>	16 channel (extendable with CAM licences)	24 channel (extendable with CAM licences)	32 channel (extendable with CAM licences)	48 channel (extendable with CAM licences)	64 channel (extendable with CAM licences)	96 channel (extendable with CAM licences)
<b>Operating System</b>	Microsoft® Windows 11 Pro 64-bit	Microsoft® Windows 11 Pro 64-bit	Microsoft® Windows 11 Pro 64-bit	Microsoft® Windows 11 Pro 64-bit	Microsoft® Windows 11 Pro 64-bit	Microsoft® Windows 11 Pro 64-bit
<b>CPU</b>	Intel® Core™ i5-10400, 6 Cores, 12 Threads, 12 MB Cache, 2.90 GHz Base Frequency, 4.30 GHz Turbo Frequency	Intel® Core™ i5-10400, 6 Cores, 12 Threads, 12 MB Cache, 2.90 GHz Base Frequency, 4.30 GHz Turbo Frequency	Intel® Core™ i5-10400, 6 Cores, 12 Threads, 12 MB Cache, 2.90 GHz Base Frequency, 4.30 GHz Turbo Frequency	Intel® Core™ i5-10400, 6 Cores, 12 Threads, 12 MB Cache, 2.90 GHz Base Frequency, 4.30 GHz Turbo Frequency	Intel® Core™ i5-13400, 10 Cores, 16 Threads, 20 MB Cache, 2.50 GHz Base Frequency, 4.60 GHz Turbo Frequency	Intel® Core™ i5-13400, 10 Cores, 16 Threads, 20 MB Cache, 2.50 GHz Base Frequency, 4.60 GHz Turbo Frequency
<b>Video Compression</b>	H.264, H.264+, H.265, H.265+ , MJPEG	H.264, H.264+, H.265, H.265+ , MJPEG	H.264, H.264+, H.265, H.265+ , MJPEG	H.264, H.264+, H.265, H.265+ , MJPEG	H.264, H.264+, H.265, H.265+ , MJPEG	H.264, H.264+, H.265, H.265+ , MJPEG
<b>Harddisk bay</b>	6x SATA	6x SATA	6x SATA	6x SATA	6x SATA	6x SATA
<b>Supply Voltage</b>	100 ~ 240 VAC, 50Hz / 60Hz	100 ~ 240 VAC, 50Hz / 60Hz	100 ~ 240 VAC, 50Hz / 60Hz	100 ~ 240 VAC, 50Hz / 60Hz	100 ~ 240 VAC, 50Hz / 60Hz	100 ~ 240 VAC, 50Hz / 60Hz
<b>Power Consumption</b>	Max. 400 W	Max. 400 W	Max. 400 W	Max. 400 W	Max. 400 W	Max. 400 W

The GRUNDIG Security Video Management System powered by C-WERK is the advanced solution for video security systems in virtually all areas of application. C-WERK sets new standards, especially with its simple and user-friendly operation. Regardless of the requirements, C-WERK can cope effectively with almost any challenge: with logical, systematic, and especially user-friendly implementation. The C-WERK platform is completely scalable and modular, and it features open system architecture. The simple license model enables individual solutions: you'll only pay for what you need.

The GRUNDIG VMS powered by C-WERK is based on an end-to-end concept with a unified software solution throughout: ranging from IP camera / recorder freeware to a video management solution for extensive, complex video facilities.

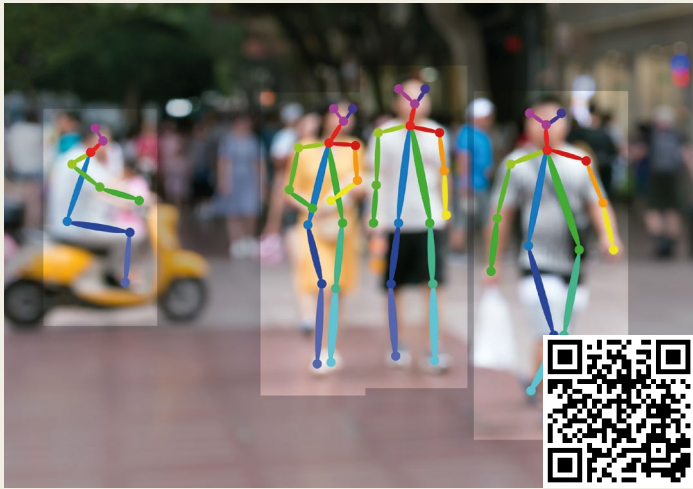
**Scan the QR codes to start videos.**

For more information please check [www.c-werk.com](http://www.c-werk.com)



**TIME LAPSE**

Time Lapse is a tool that allows the user to display all moving actions of a predetermined period in a single video. This significantly reduces the effort of finding a particular scene.



## BEHAVIOUR ANALYTICS

The intelligent Behaviour Analytics of C-WERK recognizes potentially dangerous situations by detecting specific human postures. The software identifies the positions of the body parts to detect the pose. This will improve the security for example schools, airports, banks, commercial spaces, or office buildings.

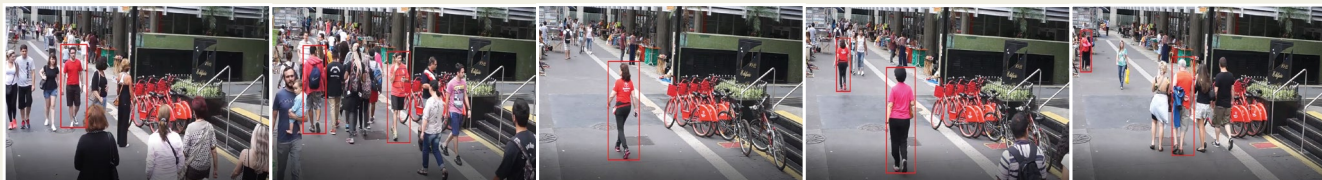
## SOME IMPORTANT FEATURES OF C-WERK VIDEO MANAGEMENT SOLUTIONS

Forensic Search is an impressive tool that searches for certain scenes or objects about self-determined properties such as object size, color, speed and direction. It is also possible to search specifically for people or vehicles.



## SIMILARITY SEARCH

The analysis function extracts human attributes such as colour and type of clothing, shoes and headwear, and stores them in a database. Search results display people with similar attributes (e.g. red shirt) from the video footage of several cameras and from archived material.



## FACE SEARCH



Face Search allows recognizing and identifying faces. In addition, it is possible to compare the recognized face with an already existing photo to carry out further automated actions.

## LPR SEARCH



License Plate Recognition allows system operators to identify, track and analyse vehicles at entry and exit points. Automatically capture license plates in both, stop & go and moving traffic to review later or automatically open barriers or denies access removing the need of a dedicated LPR operator.

## PROFESSIONAL

The professional solution covering most applications for advanced video systems

## PREMIUM

Designed for comprehensive solutions with special, unique performance characteristics

## ULTRA

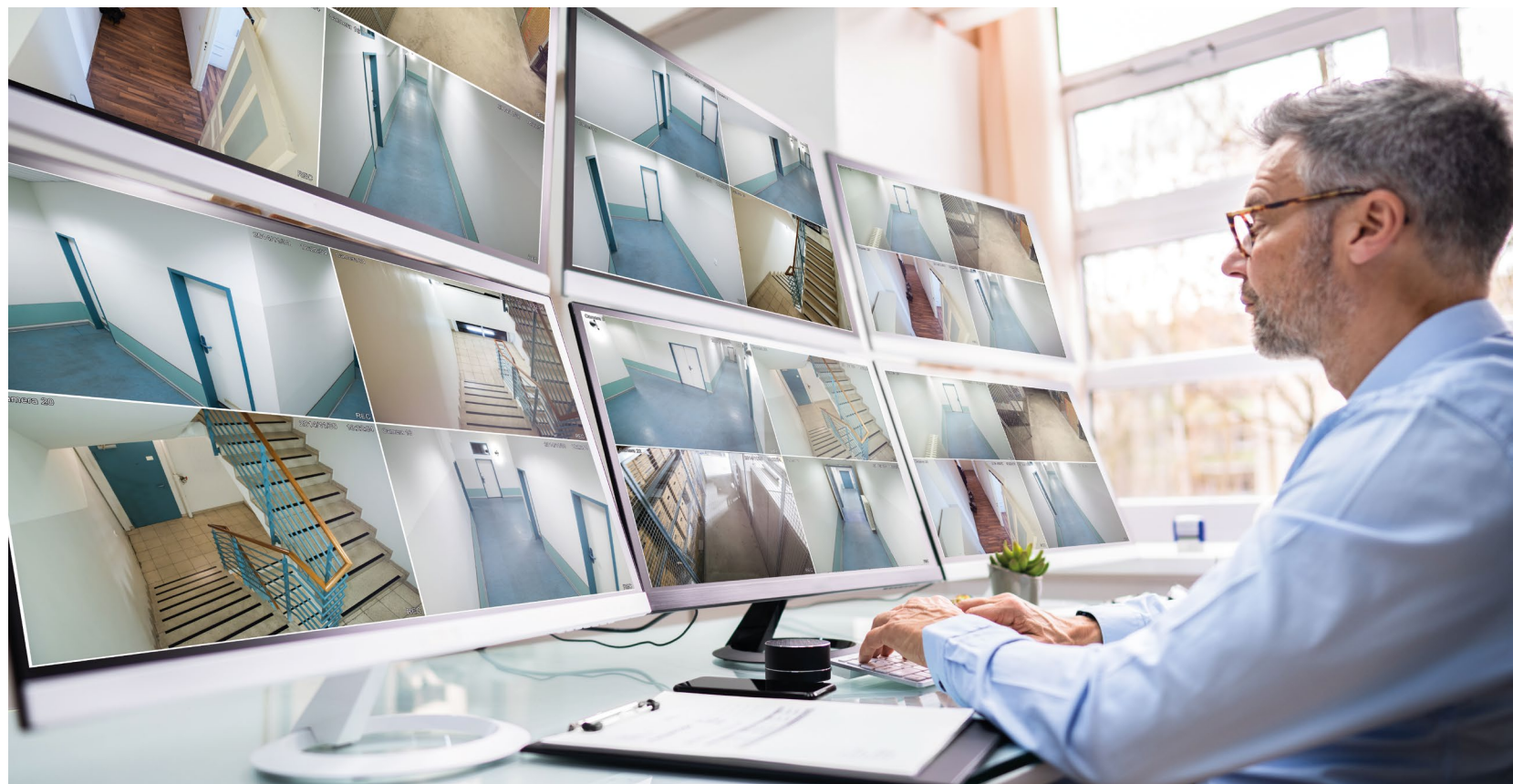
The large scale solution for an unlimited number of server connections, includes offline analytics

## Open Platform VMS by C-WERK

C-WERK is best-in-class, new-generation Video Management Software that is based on open standards to offer a truly open platform. C-WERK's reliability, performance, and convenience are unmatched on the market. Experience unprecedented flexibility and freedom of configuration: unlimited number of video servers, video cameras, workstations and mobile client devices, and more than 10.000 IP devices are all supported. Thanks to the program's application programming interface (API), C-WERK allows easily integrating third-party hardware to extend your video system's functionality yet further. The advanced ergonomic interface makes all functions intuitively easy to use and find. A transparent customer-oriented pricing policy means that you can take advantage of the program's full functionality, no matter the size of your system.

## C-WERK Highlights

- Unlimited number of cameras, servers and remote clients
- Support for more than 10.000 IP devices
- Advanced video analytics with AI detection
- Unique tools for fast video footage retrieval
- Flat pricing — easy to budget and save
- Zero maintenance fees
- Similarity search function
- Free viewer software with C-WERK VIEWER



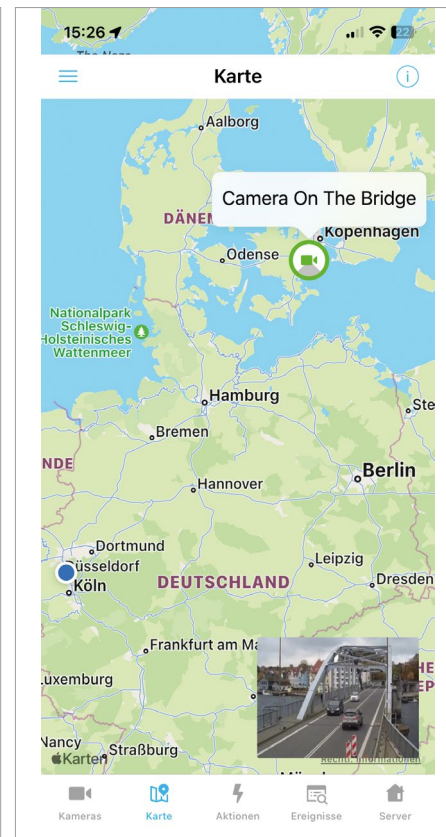
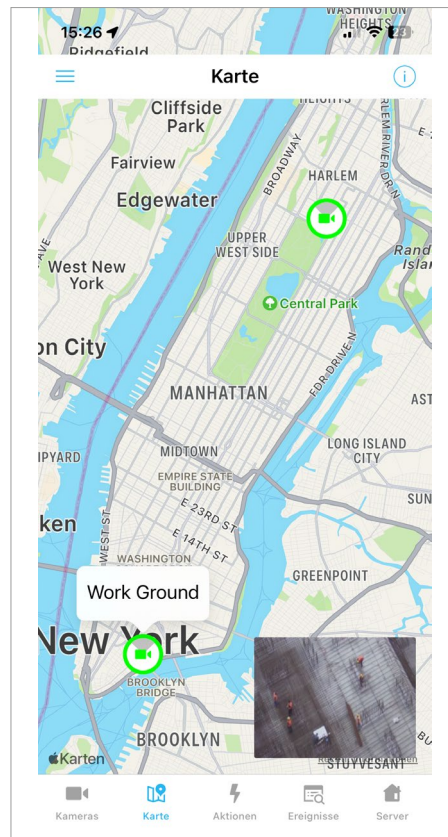
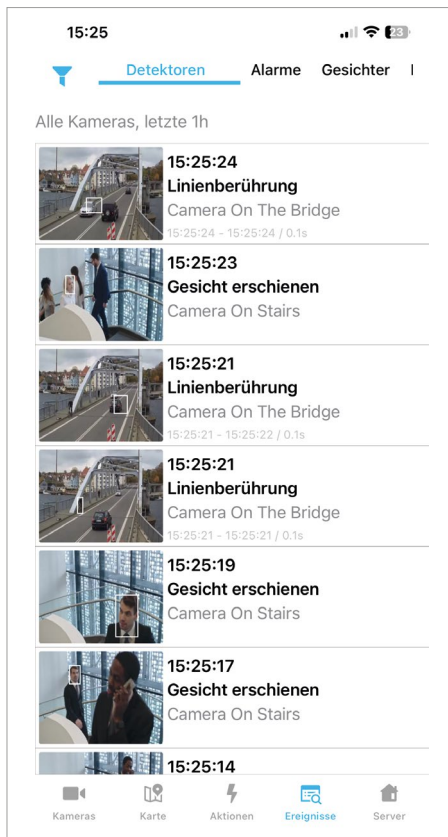


# C-WERK mobile App

The client App allows connecting to C-WERK Servers from mobile devices. The App supports receiving live video & audio from cameras, playback of recorded videos, controlling PTZ-cameras, receiving push notifications about events in the system and many more functions.



The C-WERK App is available for iOS and Android.



## C-WERK Cloud

C-WERK Cloud is a service by Grundig enabling you to:

- Securely connect to the Web Server
- Store and activate licenses
- Send E-Mails letting you know when a macro is triggered
- View & export recordings from edge devices
- Send push messages to clients

# C-WERK Licenses

ITEM CODE	DESCRIPTION	PRODUCT LINE
<b>Camera License</b>		
GD-CW-AP-CAM	C-WERK Pro Single-Channel Camera License	PROFESSIONAL
GD-CW-AT-CAM	C-WERK Premium Single-Channel Camera License	PREMIUM
GD-CW-AU-CAM	C-WERK Ultra Single-Channel Camera License	ULTRA
<b>Extension License</b>		
GD-CW-AP-SRC	C-WERK Pro Source License	PROFESSIONAL
GD-CW-AT-SRC	C-WERK Premium Source License	PREMIUM
GD-CW-AU-SRC	C-WERK Ultra Source License	ULTRA
GD-CW-AP-IFS	C-WERK Pro Forensic Search License	PROFESSIONAL
<b>Upgrade</b>		
GD-CW-AP-CAM-PLUS	C-WERK Essential to Professional Camera License Upgrade	PROFESSIONAL
GD-CW-AT-CAM-PLUS	C-WERK Professional to Premium Camera License Upgrade	PREMIUM
GD-CW-AU-CAM-PLUS	C-WERK Premium to Ultra Camera License Upgrade	ULTRA
<b>Additional modules</b>		
GD-CW-AP-LPS	C-WERK Pro License Realtime License Plate Recognition slow	PROFESSIONAL
GD-CW-AP-LPF	C-WERK Pro License Realtime License Plate Recognition fast	PROFESSIONAL
GD-CW-AP-FRT	C-WERK Pro License Realtime Face Recognition for 1 Video Channel	PROFESSIONAL
GD-CW-AP-FRT10	C-WERK Pro License Realtime Face Recognition for 10 Video Channels	PROFESSIONAL
GD-CW-AP-HBA	C-WERK Pro License Realtime Behavior Analytics	PROFESSIONAL
GD-CW-AP-PPE	C-WERK Pro License Personal Protective Equipment Recognition for 1 Camera	PROFESSIONAL
GD-CW-AP-WLDE	C-WERK Pro License Water Level Recognition for 1 Camera	PROFESSIONAL

ITEM CODE	DESCRIPTION	PRODUCT LINE
GD-CW-AT-LPS	C-WERK Premium License Realtime License Plate Recognition slow	PREMIUM
GD-CW-AT-LPF	C-WERK Premium License Realtime License Plate Recognition fast	PREMIUM
GD-CW-AT-FRT	C-WERK Premium License Realtime Face Recognition for 1 Video Channel	PREMIUM
GD-CW-AT-FRT10	C-WERK Premium License Realtime Face Recognition for 10 Video Channels	PREMIUM
GD-CW-AT-HBA	C-WERK Premium License Realtime Behavior Analytics	PREMIUM
GD-CW-AT-PPE	C-WERK Premium License Personal Protective Equipment Recognition	PREMIUM
GD-CW-AT-WLD	C-WERK Premium License Water Level Recognition for 1 Camera	PREMIUM
GD-CW-AT-SIM	C-WERK Premium License Similarity Search for 1 Camera	PREMIUM
GD-CW-AT-OFS	C-WERK Premium Offline Forensic Search License	PREMIUM
GD-CW-AU-LPS	C-WERK Ultra License Realtime License Plate Recognition slow	ULTRA
GD-CW-AU-LPF	C-WERK Ultra License Realtime License Plate Recognition fast	ULTRA
GD-CW-AU-FRT	C-WERK Ultra License Realtime Face Recognition for 1 Video Channel	ULTRA
GD-CW-AU-FRT10	C-WERK Ultra License Realtime Face Recognition for 10 Video Channels	ULTRA
GD-CW-AU-HBA	C-WERK Ultra License Realtime Behavior Analytics	ULTRA
GD-CW-AU-PPE	C-WERK Ultra License Personal Protective Equipment Recognition	ULTRA
GD-CW-AU-WLD	C-WERK Ultra License Water Level Recognition for 1 Camera	ULTRA

# Content of License Packages



FUNCTION	PROFESSIONAL	PREMIUM	ULTRA
Number of Cameras	unlimited	unlimited	unlimited
Number of Servers	30	30	unlimited
Thumbnail search	✓	✓	✓
Alarm search	✓	✓	✓
Bookmarking (with text search)	✓	✓	✓
3D Maps	✓	✓	✓
Web browser client	✓	✓	✓
IOS & Android Apps	✓	✓	✓
C-WERK Cloud Service	✓	✓	✓
Fisheye Dewarping	✓	✓	✓
Edge Analytics (camera metadata)	✓	✓	✓
Blue Stream (Bandwidth Management)	✓	✓	✓
H.265	✓	✓	✓
ONVIF profile G,S, T	✓	✓	✓
Edge Storage (Read only from SD-card or HDD)	✓	✓	✓
Event Makros	✓	✓	✓
Free Software Updates	✓	✓	✓
Cross System Client	✓	✓	✓
Time Lapse	✓	✓	✓
Data replication	—	✓	✓
Video Wall	—	✓	✓
LDAP Service	—	✓	✓
Edge Storage copy	—	✓	✓
Failover	—	✓	✓

FUNCTION	PROFESSIONAL	PREMIUM	ULTRA
Real-time Analysis (Object Tracker)	✓	✓	✓
C-WERK Data Reports	✓	✓	✓
Face Recognition	optional (GD-CW-AP-IFS)	✓	✓
Face Mask Detection	optional (GD-CW-AP-IFS)	✓	✓
LPR Detection	optional (GD-CW-AP-IFS)	✓	✓
Fire Detection	optional (GD-CW-AP-IFS)	✓	✓
Smoke Detection	optional (GD-CW-AP-IFS)	✓	✓
AI Human/Vehicle Detection	optional (GD-CW-AP-IFS)	✓	✓
Retail Pack (Visitors Counter, Queue Detection, Heat Map)	optional (GD-CW-AP-IFS)	✓	✓
Forensic Search Function	optional (GD-CW-AP-IFS)	✓	✓
Tag & Track	optional (GD-CW-AP-IFS)	✓	✓
LPR Search	optional (GD-CW-AP-IFS)	✓	✓
Face search	optional (GD-CW-AP-IFS)	✓	✓
Multicamera Search	—	✓	✓
Similarity Search	—	optional (GD-CW-AP-SIM)	✓
Offline Analytics	optional (GD-CW-AT-OFS)	optional (GD-CW-AT-OFS)	✓
Realtime-LPR 6 fps	optional (GD-CW-AP-LPS)	optional (GD-CW-AT-LPS)	optional (GD-CW-AU-LPS)
Realtime-LPR 25 fps	optional (GD-CW-AP-LPF)	optional (GD-CW-AT-LPF)	optional (GD-CW-AU-LPF)
Realtime-Face Recognition	optional (GD-CW-AP-FRT)	optional (GD-CW-AT-FRT)	optional (GD-CW-AU-FRT)
Pose Detection	optional (GD-CW-AP-HBA)	optional (GD-CW-AT-HBA)	optional (GD-CW-AU-HBA)
Personal Protective Equipment	optional (GD-CW-AP-PPE)	optional (GD-CW-AT-PPE)	optional (GD-CW-AU-PPE)
Water Level Detection	optional (GD-CW-AP-WLD)	optional (GD-CW-AT-WLD)	optional (GD-CW-AU-WLD)
Neural Counter	—	optional (GD-CW-AT-AINC)	optional (GD-CW-AU-AINC)
Administration of external Events (Alarm I/O, POS, etc.)	optional (GD-CW-AP-SRC)	optional (GD-CW-AT-SRC)	optional (GD-CW-AU-SRC)



**GD-HW-APSV08R**

**GD-HW-APSV012R**

**GD-HW-APSV024R**

**GD-HW-BPSV04T**

**GD-HW-BPSV05T**

**GD-HW-BPSV06T**

	Professional	Professional	Professional	Professional	Professional	Professional
CPU	Intel® Xeon® E-2224, 4 Cores, 4 Threads, 8 MB Cache, 3.4 GHz Base Frequency, 4.6 GHz Turbo Frequency	Intel® Xeon® E-2274G, 4 Cores, 8 Threads, 8 MB Cache, 4.0 GHz Base Frequency, 4.9 GHz Turbo Frequency	Intel® Xeon® E-2274G, 4 Cores, 8 Threads, 8 MB Cache, 4.0 GHz Base Frequency, 4.9 GHz Turbo Frequency	Intel® Core™ i5-9400, 6 Cores, 6 Threads, 9 MB Cache, 2.90 GHz Base Frequency, 4.10 GHz Turbo Frequency	Intel® Core™ i7-10700K, 8 Cores, 16 Threads, 16 MB Cache, 3.80 GHz Base Frequency, 5.10 GHz Turbo Frequency	Intel® Core™ i9-10900X, 10 Cores, 20 Threads, 19.25 MB Cache, 3.70 GHz Base Frequency, 4.50 GHz Turbo Frequency
Graphic Card	Onboard Graphics	Onboard Graphics	Onboard Graphics	NVIDIA Quadro P1000 PNY, 4 GB, GDDR5	NVIDIA Quadro P1000 PNY, 4 GB, GDDR5	NVIDIA Quadro P1000 PNY, 4 GB, GDDR5
Memory	16 GB	16 GB	16 GB	8 GB DDR4	8 GB DDR4	2x 8 GB DDR4
Operating System	Windows Server 2022 Essentials	Windows Server 2022 Essentials	Windows Server 2022 Essentials	Microsoft® Windows 10 64-bit	Microsoft® Windows 10 64-bit	Microsoft® Windows 10 64-bit
Network Interface	2x RJ45 Gbit LAN	2x RJ45 Gbit LAN	2x RJ45 Gbit LAN	1x RJ45 Gbit LAN	1x RJ45 Gbit LAN	2x RJ45 Gbit LAN
Operating Temperature	+5 °C ~ +40 °C (+41°F ~ +104°F)	+5 °C ~ +40 °C (+41°F ~ +104°F)	+5 °C ~ +40 °C (+41°F ~ +104°F)	+5 °C ~ +40 °C (+41°F ~ +104°F)	+5 °C ~ +40 °C (+41°F ~ +104°F)	+5 °C ~ +40 °C (+41°F ~ +104°F)
Supply Voltage	100 ~ 240 VAC, 50Hz / 60Hz	100 ~ 240 VAC, 50Hz / 60Hz	100 ~ 240 VAC, 50Hz / 60Hz	100 ~ 240 VAC, 50Hz / 60Hz	100 ~ 240 VAC, 50Hz / 60Hz	100 ~ 240 VAC, 50Hz / 60Hz
Power Consumption	600 W	2x 800W	2x 650 W	450 W	450 W	450 W



**GD-HW-HDD-4TB**

Professional

Server HDD 4TB Western Digital Purple

**GD-HW-HDD-8TB**

Professional

Server HDD 8TB Western Digital Purple

**GD-HW-HDD-6TB**

Professional

Server HDD 6TB Western Digital Purple

**GD-HW-HDD-10TB**

Professional

Server HDD 10TB Western Digital Purple

**GD-HW-HDD-12TB**

Professional

Server HDD 12TB Western Digital Purple





**GD-HW-ACSW04D**



**GD-HW-ACSW08D**



**GD-HW-ACSW16R**



**GD-HW-ACSW24R**

	Essential	Essential	Essential	Essential
Ports	1 x 10/100 Base-T Hi-PoE RJ45(Auto-MDI/MDI-X) 3 x 10/100 Base-T PoE RJ45(Auto-MDI/MDI-X) 2 x 10/100 RJ45 (Auto-MDI/MDI-X)	1 x 10/100 Base-T Hi-PoE RJ45(Auto-MDI/MDI-X) 7 x 10/100 Base-T PoE RJ45(Auto-MDI/MDI-X) 2 x 10/100/1000 RJ45 (Auto-MDI/MDI-X)	16 x 10/100/1000 Base-T PoE RJ45(Auto-MDI/MDI-X) 2 Gigabit SFP fiber optical ports	24 x 10/100/1000 Base-T PoE RJ45(Auto-MDI/MDI-X) 2 Gigabit SFP fiber optical ports
PoE Specification	"Port 1: 802.3af/at, 802.3bt Port 2 to 4: 802.3af/at"	"Port 1: 802.3af/at, 802.3bt Port 2 to 8: 802.3af/at"	802.3af/at (PSE)	802.3af/at (PSE)
Switching Method	Store and Forward	Store and Forward	Store and Forward	Store and Forward
Switch Throughput	1.2 Gbps	5.6 Gbps	36 Gbps	52 Gbps
MAC Address Table	2K	16K	8K	8K
ISO Standard	IEEE 802.3, IEEE 802.3u, IEEE 802.3x	IEEE 802.3, IEEE 802.3u, IEEE 802.3x, IEEE 802.3ab, IEEE 802.3z	IEEE 802.3, IEEE 802.3u, IEEE 802.3x	IEEE 802.3, IEEE 802.3u, IEEE 802.3x, IEEE 802.3ab, IEEE 802.3z
PoE Budget	60 W	110 W	125 W	225 W
Max power Output per Port	Port 1: 60 watts max Port 2 to 4: 30 watts max	Port 1: 90 watts max Port 2 to 8: 30 watts max	54V DC, 30 watts max	54V DC, 30 watts max
Fan	Fanless	Fanless	Fanless	Temperature-controlled
Material	Metal	Metal	Metal	Metal
Operating Temperature	-10°C ~ +55°C (+14°F ~ + 131°F)	-10°C ~ +55°C (+14°F ~ + 131°F)	-10°C ~ +55°C (+14°F ~ + 131°F)	-10°C ~ +55°C (+14°F ~ + 131°F)
Supply Voltage	48 VDC, Power Adapter 100 ~ 240 VAC 50, 60Hz included	48 VDC, Power Adapter 100 ~ 240 VAC 50, 60Hz included	100 ~ 240 VAC, 50Hz / 60Hz	100 ~ 240 VAC, 50Hz / 60Hz
Power Consumption	Max. power consumption 65W Power consumption in idle 5W	Max. power consumption 120W Power consumption in idle 10W	Max. power consumption 150W Power consumption in idle 25W	Max. power consumption 250W Power consumption in idle 25W



GD-CT-AC2105B



GD-CT-AC2113E



GD-CT-AP2117E



GD-CT-CC2126V



GD-CT-AP2837V

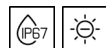


GD-CT-CP2837V



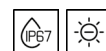
GD-CT-AP5826V

	Essential	Essential	Professional	Essential	Professional	Professional	Professional
Image Sensor	2 Megapixel progressive scan CMOS	2 Megapixel progressive scan CMOS	2 Megapixel progressive scan CMOS	2 Megapixel progressive scan CMOS	2 Megapixel progressive scan CMOS	2 Megapixel progressive scan CMOS	5 Megapixel progressive scan CMOS
Pixels-Effective	1920 (H) x 1080 (V)	1984 (H) x 1105 (V)	1920 (H) x 1080 (V)	1920 (H) x 1080 (V)	1920 (H) x 1080 (V)	1920 (H) x 1080 (V)	2560 (H) x 1944 (V)
Sensitivity Colour	0.005 Lux @ F1.2 (AGC ON)	0.01 Lux @ F1.2 (AGC ON)	0.005 Lux @ F1.2	0.01 Lux @ F1.2 (AGC ON)	0.003 Lux @ F1.2 (AGC ON)	0.003 Lux @ F1.2 (AGC ON)	0.008 Lux @ F1.2 (AGC ON)
Sensitivity B/W	—	0 Lux LED IR on	0 Lux LED IR on	0 Lux LED IR on	0 Lux LED IR on	0 Lux LED IR on	0 Lux LED IR on
Lens Focal Length	—	2.8 mm	2.8 mm	2.7 ~ 13.5 mm	2.7 ~ 13.5 mm motorized, autofocus	2.7 ~ 13.5 mm motorized, autofocus	2.8 ~ 12 mm motorized
Col/B&W	Auto (Electronic), Color, B&W	Auto, Color, B&W, IR-cut filter removable (ICR)	Auto, Color, B&W, IR-cut filter removable (ICR)	Auto, Color, B&W, IR-cut filter removable (ICR)	Auto, Color, B&W, IR-cut filter removable (ICR)	Auto (Electronic), Color, B&W	Auto, IR-cut filter removable (ICR)
Wide Dynamic Range	120 dB	Digital WDR	130 dB	Digital WDR	130 dB	130 dB	Digital WDR
Image Enhancement	BLC, 3D DNR, Mirror, AGC, WDR, Defect Pixel Correction	BLC, 2D DNR, Anti-Flicker, Mirror, AGC	BLC, 3D DNR, Anti-Flicker, Mirror, AGC, WDR, Brightness, Sharpness, Smart-IR	BLC, 2D DNR, AGC, HLC, Global	BLC, 3D DNR, Anti-Flicker, Mirror, AGC, WDR, Brightness, Sharpness, Smart-IR	BLC, 3D DNR, HLC	BLC, 2D DNR, Anti-Flicker, Mirror, AGC
Max. IR Distance	—	Up to 20 m	Up to 20 m	Up to 40 m	Up to 60 m	Up to 60 m	Up to 30 m
Video Outputs	1x HD-TVI (BNC) , 1x Composite 1.0Vp-p 75 OHM (BNC)	1x HD-TVI (BNC)	1x HD-TVI (BNC)	4 in 1 Switch between TVI, AHD, CVI and CVBS	1x HD-TVI (BNC)	1x HD-TVI (BNC)	1x HD-TVI (BNC)
Regulation	CE, EAC, FCC, RoHS Compliant	CE, EAC, FCC, RoHS Compliant	CE, EAC, FCC, RoHS Compliant	CE, EAC, FCC, RoHS Compliant	CE, EAC, FCC, RoHS Compliant	CE, EAC, FCC, RoHS Compliant	CE, EAC, FCC, RoHS Compliant
Operating Temperature	-30 °C ~ 60 °C (-22 °F ~ 140 °F)	-40 °C ~ 60 °C (-40 °F ~ 140 °F)	-40 °C ~ 60 °C (-40 °F ~ 140 °F)	-40 °C ~ 60 °C (-40 °F ~ 140 °F)	-40 °C ~ 60 °C (-40 °F ~ 140 °F)	-40 °C ~ 60 °C (-40 °F ~ 140 °F)	-40 °C ~ 60 °C (-40 °F ~ 140 °F)
Supply Voltage	12 VDC ±10%	12 VDC ±10%	12 VDC ±10%	12 VDC ±10%	12 VDC ±15%, PoC.af	12 VDC ±15%, PoC.af	12 VDC ±15%, PoC.af
Power Consumption	Max. 4 W	Max. 4 W	Max. 4.5 W	Max. 5 W	Max. 7 W	Max. 7 W	Max. 8 W



**GD-CT-BC2116T****GD-CT-BC2126T****GD-CT-AP2837T****GD-CT-BP5837T****GD-CT-BP2247P**

	Essential	Essential	Professional	Professional	Professional
Image Sensor	2 Megapixel progressive scan CMOS	2 Megapixel progressive scan CMOS	2 Megapixel progressive scan CMOS	5 Megapixel progressive scan CMOS	2 Megapixel progressive scan CMOS
Pixels-Effective	1920 (H) x 1080 (V)	1920 (H) x 1080 (V)	1920 (H) x 1080 (V)	2560 (H) x 1944 (V)	1920 (H) x 1080 (V)
Sensitivity Colour	0.01 Lux @ F1.2 (AGC ON)	0.01 Lux @ F1.2 (AGC ON)	0.003 Lux @ F1.2 (AGC ON)	0.01 Lux @ F1.2 (AGC ON)	0.005 Lux @ F1.6 (AGC ON)
Sensitivity B/W	0 Lux LED IR on	0 Lux LED IR on	0 Lux LED IR on	0 Lux LED IR on	0 Lux LED IR on
Lens Focal Length	3.6 mm	2.7 ~ 13.5 mm	2.7 ~ 13.5 mm motorized, autofocus	2.7 ~ 13.5 mm motorized	4.8 ~ 120 mm motorized, autofocus
Col/B&W	Auto, Color, B&W, IR-cut filter removable (ICR)	Auto, Color, B&W, IR-cut filter removable (ICR)	Auto, Color, B&W, IR-cut filter removable (ICR)	Auto, Color, B&W, IR-cut filter removable (ICR)	Auto, Color, B&W, IR-cut filter removable (ICR)
Wide Dynamic Range	Digital WDR	Digital WDR	130 dB	Digital WDR	120 dB
Image Enhancement	BLC, 2D DNR, Anti-Flicker, Mirror, AGC	BLC, 2D DNR, AGC, HLC, Global	BLC, 3D DNR, HLC, Anti-Flicker, Mirror, AGC, WDR, Brightness, Sharpness, Smart-IR	BLC, 2D DNR, AGC, HLC, Global	BLC, 3D DNR, EIS, HLC
Max. IR Distance	Up to 20 m	Up to 40 m	Up to 80 m	Up to 40 m	Up to 150m
Video Outputs	1x HD-TVI (BNC)	4 in 1 Switch between TVI, AHD, CVI and CVBS	1x HD-TVI (BNC) , 1x Composite 1.0Vp-p 75 OHM (BNC) WDR off	1x HD-TVI (BNC)	Switchable TVI/AHD/CVI/CVBS video output, (NTSC or PAL composite, BNC)
Regulation	CE, EAC, FCC, RoHS Compliant	CE, EAC, FCC, RoHS Compliant	CE, EAC, FCC, RoHS Compliant	CE, EAC, FCC, RoHS Compliant	CE, EAC, FCC, RoHS Compliant
Operating Temperature	-40 °C ~ 60 °C (-40 °F ~ 140 °F)	-40 °C ~ 60 °C (-40 °F ~ 140 °F)	-40 °C ~ 60 °C (-40 °F ~ 140 °F)	-40 °C ~ 60 °C (-40 °F ~ 140 °F)	-40 °C ~ 65 °C (-40 °F ~ 149 °F)
Supply Voltage	12 VDC ±10%	12 VDC ±10%	12 VDC ±15%, PoC.at	12 VDC ±15%, PoC.at	24 VAC, 50, 60Hz
Power Consumption	Max. 4 W	Max. 5 W	Max. 8.2 W	Max. 9.5 W	Max. 30 W





	<b>GD-RT-BC3004N</b>	<b>GD-RT-BC3008N</b>	<b>GD-RT-BC3016N</b>	<b>GD-RT-AP5004P</b>	<b>GD-RT-AP8008P</b>	<b>GD-RT-AP8016N</b>
	<b>Essential</b>	<b>Essential</b>	<b>Essential</b>	<b>Professional</b>	<b>Professional</b>	<b>Professional</b>
<b>Video Inputs</b>	4-ch, BNC	8-ch, BNC	16-ch, BNC	4-ch, BNC	8-ch, BNC, supporting PoC	16-ch, BNC
<b>HD-TVI Input</b>	4MP, 3 MP, 1080p30, 1080p25	3 MP, 1080p30	3 MP, 1080p30	8 MP, 5 MP, 4 MP, 3 MP, 1080p30	8 MP, 5 MP, 4 MP, 3 MP, 1080p30	8 MP, 5 MP, 4 MP, 3 MP, 1080p30
<b>AHD Input</b>	4 MP, 1080p25, 1080p30	4 MP, 1080p25, 1080p30	4 MP, 1080p25, 1080p30	5 MP, 4 MP, 1080p30	5 MP, 4 MP, 1080p30	5 MP, 4 MP, 1080p30
<b>CVI Input</b>	4 MP, 1080p30	4 MP, 1080p30	4 MP, 1080p30	4 MP, 1080p30	4 MP, 1080p30	5MP, 4 MP, 1080p30
<b>CVBS Input</b>	PAL, NTSC	PAL, NTSC	PAL, NTSC	PAL, NTSC	PAL, NTSC	PAL, NTSC
<b>IP Inputs</b>	5 (6 IP enhance mode)	4 (12 IP enhance mode)	18 (24 IP enhance mode)	6 (8 IP enhance mode)	12 (16 IP enhance mode)	24 (32 IP enhance mode)
<b>Recording Resolution</b>	4 MP, 3 MP, 1080p, 720p, WD1, 4CIF (when 1080P lite not enabled)	4 MP, 3 MP, 1080p, 720p, WD1, 4CIF (when 1080P lite not enabled)	4 MP, 3 MP, 1080p, 720p, WD1, 4CIF (when 1080P lite not enabled)	8 MP, 5 MP, 4 MP, 3 MP, 1080p, 720p, WD1, 4CIF, VGA, CIF	8 MP, 5 MP, 4 MP, 3 MP, 1080p, 720p, WD1, 4CIF, VGA, CIF	8 MP, 5 MP, 4 MP, 3 MP, 1080p, 720p, WD1, 4CIF, VGA, CIF
<b>Video Compression</b>	H.264, H.264+, H.265, H.265pro, H.265pro+	H.264, H.264+, H.265, H.265pro, H.265pro+	H.264, H.264+, H.265, H.265pro, H.265pro+	H.264, H.264+, H.265, H.265pro, H.265pro+	H.264, H.264+, H.265, H.265pro, H.265pro+	H.264, H.264+, H.265, H.265pro, H.265pro+
<b>Recording Mode</b>	Continuous, Event Alarm, Motion, Video Loss, Schedule	Continuous, Event Alarm, Motion, Video Loss, Schedule	Continuous, Event Alarm, Motion, Video Loss, Schedule	Continuous, Event Alarm, Motion, Video Loss, Schedule	Continuous, Event Alarm, Motion, Video Loss, Schedule	Continuous, Event Alarm, Motion, Video Loss, Schedule
<b>Search Mode</b>	Date, Time, Event Alarm, Motion, Search Backup, Quick search by object or event type	Date, Time, Event Alarm, Motion, Search Backup, Quick search by object or event type	Date, Time, Event Alarm, Motion, Search Backup, Quick search by object or event type	Date, Time, Event Alarm, Motion, Search Backup	Date, Time, Event Alarm, Motion, Search Backup	Date, Time, Event Alarm, Motion, Search Backup
<b>External Backup</b>	USB HDD, USB Memory, USB DVD-R, Network	USB HDD, USB Memory, USB DVD-R, Network	USB HDD, USB Memory, USB DVD-R, Network	USB HDD, USB Memory, USB DVD-R, Network	USB HDD, USB Memory, USB DVD-R, Network	USB HDD, USB Memory, Network
<b>Motion Detection</b>	On, Off, Area Setting	On, Off, Area Setting	On, Off, Area Setting	On, Off, Area Setting	On, Off, Area Setting	On, Off, Area Setting
<b>HDMI Output</b>	1920×1080, 60Hz, 1280×1024, 60Hz, 1280×720, 60Hz, 1024×768, 60Hz	1920×1080, 60Hz, 1280×1024, 60Hz, 1280×720, 60Hz, 1024×768, 60Hz	1920×1080, 60Hz, 1280×1024, 60Hz, 1280×720, 60Hz, 1024×768, 60Hz	1920×1080, 60Hz, 1280×1024, 60Hz, 1280×720, 60Hz, 1024×768, 60Hz	4K (3840 × 2160)/30Hz	4K (3840 × 2160)/30Hz
<b>Harddisk bay</b>	1 x SATA III	1 x SATA III	1 x SATA III	1 x SATA III	2 x SATA III	2 x SATA III
<b>Max. Storage Capacity</b>	Up to 10TB capacity for each HDD	Up to 10TB capacity for each HDD	Up to 10TB capacity for each HDD	Up to 10TB capacity for each HDD (not mandatory)	Up to 10TB capacity for each HDD	Up to 10TB capacity for each HDD
<b>PoC Interface</b>	—	—	—	4-ch	8-ch	—
<b>Alarm Inputs</b>	—	—	—	4 contact input N/ O or N/ C	8 contact input N/ O or N/ C	16 contact input N/ O or N/ C
<b>Alarm Outputs</b>	—	—	—	1	4	1
<b>Supply Voltage</b>	12 VDC, Power Adapter 100 ~ 240 VAC 50, 60Hz included	12 VDC, Power Adapter 100 ~ 240 VAC 50, 60Hz included	12 VDC, Power Adapter 100 ~ 240 VAC 50, 60Hz included	48 VDC, Power Adapter 100 ~ 240 VAC 50, 60Hz included	48 VDC, Power Adapter 100 ~ 240 VAC 50, 60Hz included	12 VDC, Power Adapter 100 ~ 240 VAC 50, 60Hz included
<b>Power Consumption</b>	≤ 18 W without harddisk	≤ 18 W without harddisk	≤ 24W without hard disks	≤ 40 W without harddisk	≤ 60 W without hard disk, PoC	≤ 19 W without hard disks

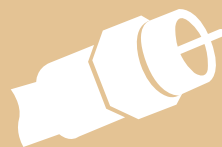




### GD-RT-AP8016P

### GD-RT-AT8016N

	Professional	Premium
Video Inputs	16-ch, supporting PoC	16-ch, BNC
HD-TVI Input	8 MP, 5 MP, 4 MP, 3 MP, 1080p30	8 MP, 5 MP, 4 MP, 3 MP, 1080p30
AHD Input	5 MP, 4 MP, 1080p30	5 MP, 4 MP, 1080p30
CVI Input	4 MP, 1080p30	4 MP, 1080p30
CVBS Input	PAL, NTSC	PAL, NTSC
IP Inputs	24 (32 IP enhance mode)	18, up to 8 MP
Recording Resolution	8 MP, 5 MP, 4 MP, 3 MP, 1080p, 720p, WD1, 4CIF, VGA, CIF	8 MP, 5 MP, 4 MP, 3 MP, 1080p, 720p, WD1, 4CIF, VGA, CIF
Video Compression	H.264, H.264+, H.265, H.265pro, H.265pro+	H.264, H.264+, H.265, H.265pro, H.265pro+
Recording Mode	Continuous, Event Alarm, Motion, Video Loss, Schedule	Continuous, Event Alarm, Motion, Video Loss, Schedule
Search Mode	Date, Time, Event Alarm, Motion, Search Backup	Date, Time, Event Alarm, Motion, Search Backup
External Backup	USB HDD, USB Memory, USB DVD-R, Network	USB HDD, USB Memory, USB DVD-R, Network, eSATA
Motion Detection	On, Off, Area Setting	On, Off, Area Setting
HDMI Output	4K (3840 × 2160)/30Hz	HDMI1 & VGA: 1920 × 1080, 60Hz HDMI2: 4K (3840 × 2160)
Harddisk bay	2 x SATA III	4 x SATA III, 1 x eSATA
Max. Storage Capacity	Up to 10TB capacity for each HDD	Up to 10TB capacity for each HDD
PoC Interface	16-ch	—
Alarm Inputs	4 contact input N/ O or N/ C	16 contact input N/ O or N/ C
Alarm Outputs	1	4
Supply Voltage	100 ~ 240 VAC, 50Hz / 60Hz	100 ~ 240 VAC, 50Hz / 60Hz
Power Consumption	≤ 140 W without hard disk , PoC	≤ 65W without hard disks



PoC

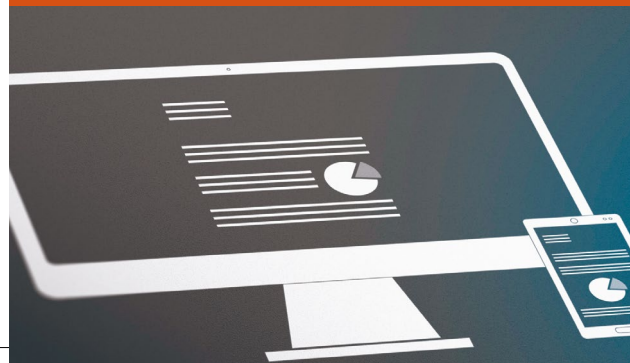
## POWER OVER COAXIAL (POC)

With the Power over Coaxial (PoC) option the camera can be powered by the DVR via coaxial video cable. This makes the usage of separate cables and power supplies needless which would otherwise be needed to power your cameras. For installers this means a much more time and cost-efficient installation.

PoC can be used on cable runs up to 800 meters for a 5 MP-camera (depending on cable type) and is available in 4, 8 and 16 channel DVRs (models ending with -P). A full complement of GRUNDIG TVI PoC-cameras is also available which together offer a cost effective and time saving solution to your TVI installations.

## MIGRATION FROM ANALOGUE COAXIAL CABLE TO IP SOLUTIONS

GRUNDIG offers the most efficient and cost-effective upgrade from existing video security systems to high-resolution technology solutions. Depending on the existing cable and technology in place, with GRUNDIG you can upgrade your system using high-resolution cameras, display and recording. With high-definition TVI-cameras you can replace analogue standard-resolution cameras by high-resolution cameras and can upgrade from your existing embedded system to a TVI embedded recorder — which enhances your equipment from a 0.5 to a 5 Megapixel resolution system.



GRUNDIG embedded recorders are ONVIF profile G compatible and can be managed by the GRUNDIG Video Management System or by any other third-party VMS.

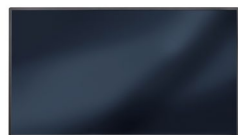
GRUNDIG HD-TVI recorders operate with all common analogue standards such as CVBS, 960H, CVI, AHD and of course HD-TVI — up to 8 Megapixel resolution. And even more: In addition, IP camera channels are available to mix all front-end technologies on site.

**GD-ML-AP1031SD****GD-ML-DP2230HD****GD-ML-DP2430HD****GD-ML-DP2730HD**

	Professional	Professional	Professional	Professional
LCD Panel size	25.6 cm (10.1") Diagonal AM-TFT LED Backlight	54.6 cm (21, 5") Diagonal AM-TFT LED Backlight	59.9 cm (23.6") Diagonal AM-TFT LED Backlight	68.5 cm (27") Diagonal AM-TFT LED Backlight
Pixels-Total	1280 (H) x 800 (V)	1920 (H) x 1080 (V)	1920 (H) x 1080 (V)	1920 (H) x 1080 (V)
Pixel Pitch	0.192 mm (H) x 0.192 mm (V)	0.248 mm (H) x 0.248 mm (V)	0.248 mm (H) x 0.248 mm (V)	0.248 mm (H) x 0.248 mm (V)
Aspect Ratio	16 : 9	16 : 9	16 : 9	16 : 9
Video Standard	PAL, NTSC	PAL, NTSC	PAL, NTSC	PAL, NTSC
Video Inputs	1x Composite, BNC looped, 1x VGA, 1x HDMI	1x HDMI, 1x VGA, 1x USB	1x HDMI, 1x VGA, 1x USB	1x HDMI, 1x VGA, 1x USB
Brightness	350 cd, m <sup>2</sup>	300 cd, m <sup>2</sup>	300 cd, m <sup>2</sup>	300 cd, m <sup>2</sup>
Contrast Ratio	800:1	1000:1	1000:1	1000:1
Number of Colours	262K	16.7 million	16.7 million	16.7 million
Viewing Angle	160° (H) ~ 160° (V)	170° (H) ~ 160° (V)	170° (H) ~ 160° (V)	170° (H) ~ 160° (V)
Response Time	12 ms	5 ms	5 ms	5 ms
Display protection	Tempered acryl glass with anti-reflection coating	—	—	—
Audio Inputs	1x 3.5mm jack (Line) , 1x HDMI	1-ch, RCA (2.0 Vp-p, 1kΩ)	1-ch, RCA (2.0 Vp-p, 1kΩ)	1-ch, RCA (2.0 Vp-p, 1kΩ)
Speakers	yes	2 x 2 W	2 x 2 W	2 x 2 W
Vesa Mount	75 x 75 mm	75 x 75 mm	100 x 100 mm	75 x 75 mm
OSD (On Screen Display)	Yes, multi language	Yes, multi language	Yes, multi language	Yes, multi language
Accessories included	Stand, power adapter, HDMI cable and remote control	Power Adapter and HDMI cable	Power Adapter and HDMI cable	Power Adapter and HDMI cable
Regulation	CE, EAC, FCC, RoHS Compliant	CE, EAC, FCC, RoHS Compliant	CE, EAC, FCC, RoHS Compliant	CE, EAC, FCC, RoHS Compliant
Power Consumption	Max. 12 W	Max. 21 W	Max. 21 W	Max. 21 W
Supply Voltage	12 VDC, Power Adapter 100 ~ 240 VAC 50, 60Hz included	12 VDC, Power Adapter 100 ~ 240 VAC 50, 60Hz included	12 VDC, Power Adapter 100 ~ 240 VAC 50, 60Hz included	12 VDC, Power Adapter 100 ~ 240 VAC 50, 60Hz included



**GD-ML-BP4330HD**



**GD-ML-BP5540UHD**

Professional	Professional
109 cm (43") Diagonal AM-TFT LED Backlight	140 cm (55") Diagonal AM-TFT LED Backlight
1920 (H) x 1080 (V)	3840 (H) x 2160 (V)
0.248 mm (H) x 0.248 mm (V)	0.315 mm (H) x 0.315 mm (V)
16 : 9	16 : 9
PAL, NTSC	PAL, NTSC
2x HDMI, 1x VGA, 1x AV	1x Display Port, 3x HDMI
500 cd, m <sup>2</sup>	350 cd, m <sup>2</sup>
1000:1	4000:1
16.7 million	1073 G
178° (H) ~ 178° (V)	178° (H) ~ 178° (V)
5 ms	5 ms
—	—
1-ch, RCA (2.0 Vp-p, 1kΩ)	—
2 x 5 W	—
200 x 200 mm	400 x 400 mm
Yes, multi language	Yes, multi language
Stand, power cable, HDMI cable and remote control	Power Adapter and HDMI cable, remote control
CE, EAC, FCC, RoHS Compliant	CE, EAC, FCC, RoHS Compliant
Max. 95 W	Max. 130 W
100 ~ 240 VAC, 50Hz / 60Hz	100 ~ 240 VAC, 50Hz / 60Hz



## THE MONITOR SERIES FROM GRUNDIG SECURITY: SCREENS WITH TRADITION!

Our latest monitor series impresses with its elegant design and ultra-thin screen edges.

At the same time, it meets the requirements of modern video systems. The devices are equipped with extra robust components to ensure reliable use 24 hours a day, 7 days a week, 365 days a year.

In addition, the panels have been specially selected for video surveillance applications and use technologies to prevent ghosting and offer high brightness and contrast values.



GD-CI-AP2605B  
GD-CI-AT8505B



GD-BR-AWA03  
Wall Mount Bracket for Box Camera



GD-CI-CC2616V  
GD-CI-EC4617V  
GD-CI-FC4617V  
GD-CI-AP4617V



GD-BR-AJX03  
Junction Box



GD-CI-AC6614E



GD-BR-AJX04  
Junction Box



GD-BR-AJX14  
Junction Box inclined



GD-BR-AMC03  
Corner Mount Bracket



GD-BR-AMW14  
Wall Mount Bracket



GD-BR-AMP09  
Pendant Mount Bracket



GD-BR-AMW05  
Wall Mount Bracket



GD-BR-ASN01  
Sunshield for Fixed Dome Cameras



GD-BR-AWJ02  
Wall Mount Bracket with Junction Box



GD-CI-AP8617E



GD-BR-AJX17  
Junction Box



GD-BR-AMC03  
Corner Mount Bracket



GD-CI-CP4617W  
GD-CI-DP4617W



GD-BR-AJX10  
Junction Box



GD-BR-AMP16  
Pendant Mount Bracket



GD-BR-AMW22  
Wall Mount Bracket



GD-CI-CP4637E



GD-BR-AJX12  
Junction Box



GD-BR-AMC01  
Corner Mount Bracket



GD-BR-AML03  
Pole Mount Bracket



GD-BR-AMP08  
Pendant Mount Bracket



GD-BR-AMW04  
Wall Mount Bracket



GD-BR-AWJ01  
Wall Mount Bracket with Junction Box



GD-CI-AP2627V



GD-BR-AMF06  
Flush Mount Adapter



GD-BR-AMP10  
Pendant Mount Bracket



GD-BR-AMW01  
Wall Mount Bracket



GD-BR-AWJ07  
Wall Mount Bracket with Junction Box



GD-CI-CC4637V



GD-BR-AJX01  
Junction Box



GD-BR-AMF01  
Flush Mount Adapter



GD-BR-AMP08  
Pendant Mount Bracket



GD-BR-AMW04  
Wall Mount Bracket



GD-BR-AWJ01  
Wall Mount Bracket with Junction Box



GD-CI-AP6637V



GD-BR-AJX13  
Junction Box



GD-BR-AMF09  
Flush Mount Adapter



GD-BR-AMP10  
Pendant Mount Bracket



GD-BR-AMW01  
Wall Mount Bracket



GD-BR-AWJ07  
Wall Mount Bracket with Junction Box





GD-CI-CP4637V  
GD-CI-BP8637V



GD-BR-AMC01  
Corner Mount Bracket  
GD-BR-AMF06  
Flush Mount Adapter  
GD-BR-AML03  
Pole Mount Bracket  
GD-BR-AMP10  
Pendant Mount Bracket  
GD-BR-AMW01  
Wall Mount Bracket  
GD-BR-AWJ07  
Wall Mount Bracket with Junction Box



GD-CI-AP2627T  
GD-CI-AP4637T  
GD-CI-DT4637T  
GD-CI-ET4637T  
GD-CI-CT4537T  
GD-CI-CT8637T  
GD-CI-AT12637T



GD-BR-AMC01  
Corner Mount Bracket  
GD-BR-AML03  
Pole Mount Bracket



GD-CI-CT4537TH  
GD-CI-AT4634T  
GD-CI-ET4537TH  
GD-CI-BT8537TH



GD-BR-AMC03  
Corner Mount Bracket  
GD-BR-AML01  
Pole Mount Bracket



GD-CI-AC4637P



GD-BR-AMP12  
Pendant Mount Bracket  
GD-BR-AMW18  
Wall Mount Bracket



GD-CI-CP2647P



GD-BR-AJX02  
Junction Box  
GD-BR-AMF02  
Flush Mount Adapter  
GD-BR-AMP02  
Pendant Mount Bracket (long)  
GD-BR-AMP03  
Pendant Mount Bracket (medium long)  
GD-BR-AMP05  
Pendant Mount Bracket (short)  
GD-BR-AMW11  
Wall Mount Bracket



GD-CI-BT4537VH



GD-BR-AMF10  
Flush Mount Adapter  
GD-BR-AMP10  
Pendant Mount Bracket  
GD-BR-AMW01  
Wall Mount Bracket  
GD-BR-ASN01  
Sunshield for Fixed Dome Cameras  
GD-BR-AWJ07  
Wall Mount Bracket with Junction Box



GD-CI-AT4634V



GD-BR-AMC03  
Corner Mount Bracket  
GD-BR-AML01  
Pole Mount Bracket



GD-CI-CT12617F



GD-BR-AJX08  
Junction Box  
GD-BR-AMW19  
Wall Mount Bracket



GD-CI-CC2616T  
GD-CI-DC2616T  
GD-CI-EC4617T  
GD-CI-FC4617T



GD-BR-AJX05  
Junction Box



GD-CI-CC4637T  
GD-CI-AP4617T  
GD-CI-AP6637T  
GD-CI-BP8637T



GD-BR-AJX04  
Junction Box  
GD-BR-AMC03  
Corner Mount Bracket  
GD-BR-AML01  
Pole Mount Bracket



GD-CI-CP2747P  
GD-CI-AP4647P  
GD-CI-AP4747P  
GD-CI-AT30516Q



GD-BR-AMA01  
Parapet Wall Mount for PTZ Domes

GD-BR-AMC04  
Corner Mount Bracket Junction Box for PTZ Domes

GD-BR-AMP01  
Pendant Mount Bracket (long) for PTZ Domes

GD-BR-AMP04  
Pendant Mount Bracket (medium long) for PTZ Domes

GD-BR-AMP06  
Pendant Mount Bracket (short) for PTZ Domes

GD-BR-AMP07  
Pendant Mount Bracket extendable

GD-BR-AMS01  
Swan Neck Mount for PTZ Domes

GD-BR-AMW10  
Wall Mount Bracket for PTZ Domes



GD-CI-AT20527Q



GD-BR-AMP04  
Pendant Mount Bracket (medium long) for PTZ Domes

GD-BR-AMP06  
Pendant Mount Bracket (short) for PTZ Domes

GD-BR-AMW08  
Wall Mount Bracket for PTZ Domes

GD-BR-AMW09  
Wall Mount Bracket Pole Mount Adapter and Junction



GD-TI-AP1614V  
GD-TI-BP1603V  
GD-TI-AP4607V



GD-BR-AJX01  
Junction Box

GD-BR-AMP15  
Pendant Mount Bracket

GD-BR-AMW16  
Wall Mount Bracket

GD-BR-AWJ06  
Wall Mount Bracket with Junction Box



GD-CI-CT4747P  
GD-CI-BT4747P  
GD-CI-AT8747P



GD-BR-AMA01S  
Parapet Wall Mount for PTZ Domes silver-grey

GD-BR-AMC04S  
Corner Mount Bracket Junction Box for PTZ Domes

GD-BR-AML06S  
Pole Mount Bracket with Junction Box for PTZ Domes

GD-BR-AMP01S  
Pendant Mount Bracket (long) for PTZ Domes

GD-BR-AMP04S  
Pendant Mount Bracket (medium long) for PTZ Domes

GD-BR-AMP06S  
Pendant Mount Bracket (short) for PTZ Domes

GD-BR-AMP07S  
Pendant Mount Bracket extendable silver-grey

GD-BR-AMW08S  
Wall Mount Bracket for PTZ Domes silver-grey

GD-BR-AMW10S  
Wall Mount Bracket for PTZ Domes silver-grey

GD-BR-AMW17S  
Pole Mount for PTZ Domes silver-grey



GD-TI-BP1603T  
GD-TI-BP1606T  
GD-TI-BP1610T  
GD-TI-AP4503T  
GD-TI-AP4507T  
GD-TI-AP4510T  
GD-TI-AT2604T  
GD-TI-AT2607T  
GD-TI-AT2610T  
GD-TI-AT2615T  
GD-TI-AT2625T  
GD-TI-CT2510T  
GD-TI-AT3607T  
GD-TI-AT3625T



GD-BR-AMC03  
Corner Mount Bracket

GD-BR-AML01  
Pole Mount Bracket



GD-CT-AC2105B



GD-BR-AWA03  
Wall Mount Bracket for Box Camera



GD-CT-AC2113E



GD-BR-AJX05  
Junction Box

GD-BR-AMW14  
Wall Mount Bracket



GD-CT-AP2117E



GD-BR-AJX04  
Junction Box

GD-BR-AMW14  
Wall Mount Bracket



GD-CT-CC2126V



GD-BR-AJX15  
Junction Box inclined  
GD-BR-AJX16  
Junction Box  
GD-BR-AMP17  
Pendant Mount Bracket  
GD-BR-AMW23  
Wall Mount Bracket



GD-CT-AP2837V  
GD-CT-AP5826V



GD-BR-AJX01  
Junction Box  
GD-BR-AMF08  
Flush Mount Adapter  
GD-BR-AMP14  
Pendant Mount Bracket  
GD-BR-AMW15  
Wall Mount Bracket  
GD-BR-AWJ05  
Wall Mount Bracket with Junction Box



GD-CT-CP2837V



GD-BR-AJX15  
Junction Box inclined  
GD-BR-AJX16  
Junction Box  
GD-BR-AMC03  
Corner Mount Bracket  
GD-BR-AML01  
Pole Mount Bracket  
GD-BR-AMP17  
Pendant Mount Bracket  
GD-BR-AMW23  
Wall Mount Bracket



GD-CT-BC2116T



GD-BR-AJX05  
Junction Box



GD-CT-BC2126T



GD-BR-AJX04  
Junction Box  
GD-BR-AJX05  
Junction Box  
GD-BR-AMC03  
Corner Mount Bracket  
GD-BR-AML01  
Pole Mount Bracket



GD-CT-AP2837T  
GD-CT-BP5837T



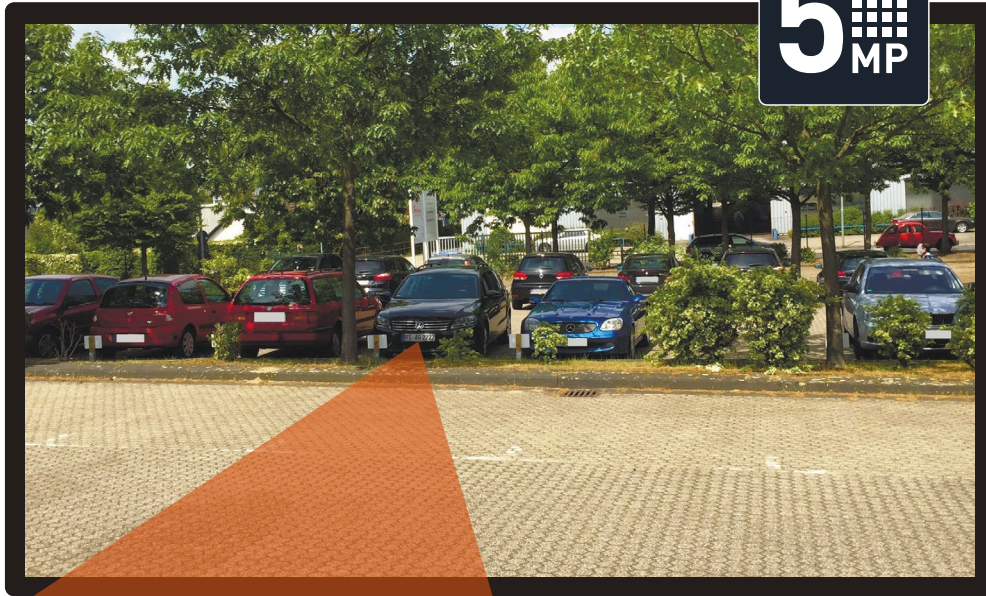
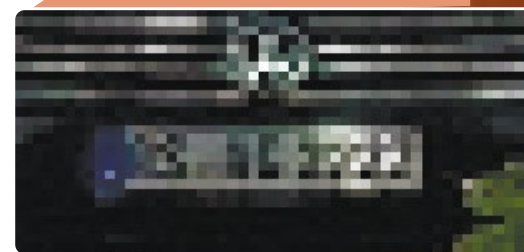
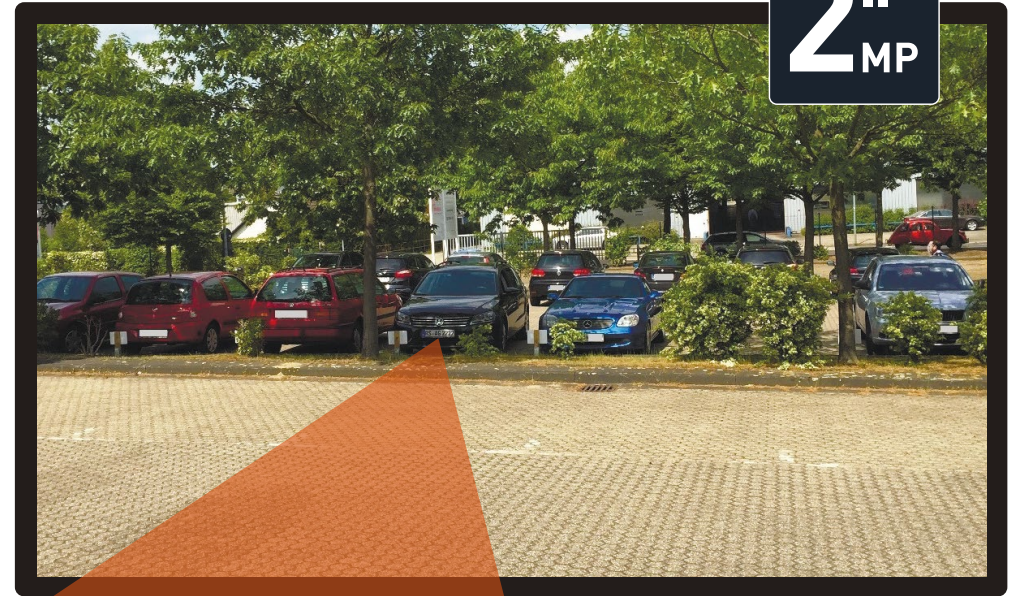
GD-BR-AJX04  
Junction Box  
GD-BR-AMC03  
Corner Mount Bracket  
GD-BR-AML01  
Pole Mount Bracket



GD-CT-BP2247P



GD-BR-AMA01  
Parapet Wall Mount for PTZ Domes  
GD-BR-AMC04  
Corner Mount Bracket Junction Box for PTZ Domes  
GD-BR-AMP01  
Pendant Mount Bracket (long) for PTZ Domes  
GD-BR-AMP04  
Pendant Mount Bracket (medium long) for PTZ Domes  
GD-BR-AMP06  
Pendant Mount Bracket (short) for PTZ Domes  
GD-BR-AMP07  
Pendant Mount Bracket extendable  
GD-BR-AMS01  
Swan Neck Mount for PTZ Domes  
GD-BR-AMW10  
Wall Mount Bracket for PTZ Domes  
GD-BR-AWJ03  
Wall Mount Bracket with Junction Box for PTZ Domes

**5**  
MP**2**  
MP

## RESOLUTION 5 MEGAPIXELS VERSUS 2 MEGAPIXELS

### Resolution

GRUNDIG offers a wide range of cameras, with resolutions from 1 up to 12 megapixels. This allows use of the most cost-effective camera in many and various applications. Depending on the area that needs to be monitored, and on the level of desired recognition, GRUNDIG always offers the most effective camera to manage the surveillance job.

# SMART LINE: THE NDAA-COMPLIANT PRODUCT LINE FROM GRUNDIG SECURITY

The SMART product line from GRUNDIG Security comprises nine camera models with 5 or 8 megapixels resolution and various form factors. The new product line is complemented by four — partly fanless — 4-, 8- and 16-channel recorders. A comprehensive range of accessories rounds off the NDAA-compliant SMART product line.

## What can you expect from the new SMART product line from GRUNDIG Security?

Leaving our tried and tested reliability aside, you will also find a whole lot of image analysis functions, supported by artificial intelligence (AI). And there's a lot of functionality available. You can use facial recognition, for instance, to recognise people, or the LPR function to identify vehicle licence plates. Or you can quite simply reduce the frequency of false alarms signalling a spurious break-in or perimeter breach, by classifying objects as 'vehicle', 'person' or 'other'.

## Are you curious about what else the products in the SMART product line from GRUNDIG Security can do?

Then you should download the SMART product overview:



The SMART cameras from GRUNDIG Security can recognise faces in crowds of people, count heads and determine the length of queues at your supermarket till, therefore helping you to make the best possible use of your resources. They'll let you know when unauthorised people cross pre-defined lines or enter certain areas, and they'll trigger an alarm when objects are left at your doorstep.

## You'd rather see these analysis functions in action?

Then take a look at the "SMART Line" playlist on our YouTube channel:



Identify licence plates



Classify persons & vehicles



Identify faces



Enter area



## AI FUNCTIONALITY

Detect left/removed objects



Use heat map



Cross lines



Manage queues



Analyse crowds



Count people/objects



Detect unusual noises





**GD-KB-AP1420P**



**GD-KB-AP1120P**



**GD-KB-AT2430P**

	Professional	Professional	Premium
LCD Panel size	6.5 cm (2.6") Diagonal AM-TFT LED Backlight	—	10.1" (25.6 cm) TFT LCD colour touch display, 1280 x 800
PTZ Control	4-axis joystick, PTZ-, focus- & iris-control, setting and calling Presets, Patterns & Patrols, Auto-Scan, Auto-Pan, Wiper, AUX	4-axis joystick, PTZ-, focus- & iris-control, setting and calling Presets, Patterns & Patrols, Auto-Scan, Auto-Pan, Wiper, AUX	4-axis joystick, PTZ-, focus- & iris-control, setting and calling Presets, Patterns & Patrols, Auto-Scan, Auto-Pan, Wiper, AUX
DVR Control	Play, Stop, Pause, FF, RW, Rec, PTZ, Menu, Search, Backup, Monitors	Play, Stop, Pause, FF, RW, Rec, Menu, Search, Backup, Monitors	Play, Stop, Pause, FF, RW, Rec, Menu, Search, Backup
Lens Control	Iris (Close, Open) , Focus (Near, Far, Auto) , Zoom (Tele, Wide)	Iris (Close, Open) , Focus (Near, Far, Auto) , Zoom (Tele, Wide)	Iris (Close, Open) , Focus (Near, Far, Auto) , Zoom (Tele, Wide)
Operating System	—	Microsoft Windows® and Linux®	Android 6.0
Users	Up to 16 users, 2 levels: Administrator and User	1 user, 1 level	Up to 32 users, 2 levels: Administrator and User
Video Compression	—	—	H.264, H.265
Audio Input/Output	—	—	1-ch audio input and 1-ch audio output
Serial Interface(s)	1x RS-232, 1x RS-422, 1x RS-485	USB 2.0, DirectX	2x USB 2.0 (RS232/485 with adapter)
Network Interface	—	—	1x 10, 100, 1000 Base T, TX (RJ-45)
Suitable for	NVR, DVR & PTZ-camera	C-WERK clients	NVR, DVR, PTZ-camera
Video Outputs	—	—	1x DVI, 1x HDMI
Operating Temperature	-10°C ~ 55°C	0°C ~ 45°C	-10°C ~ 55°C
Supply Voltage	12 VDC	5 VDC by USP port	12 VDC, PoE (IEEE 802.3af)
Power Consumption	Max. 4.5 W	Max. 2 W	Max. 15.5 W



**GD-LD-AC2812DC-IR**



**GD-LD-AC0550DC-IR**

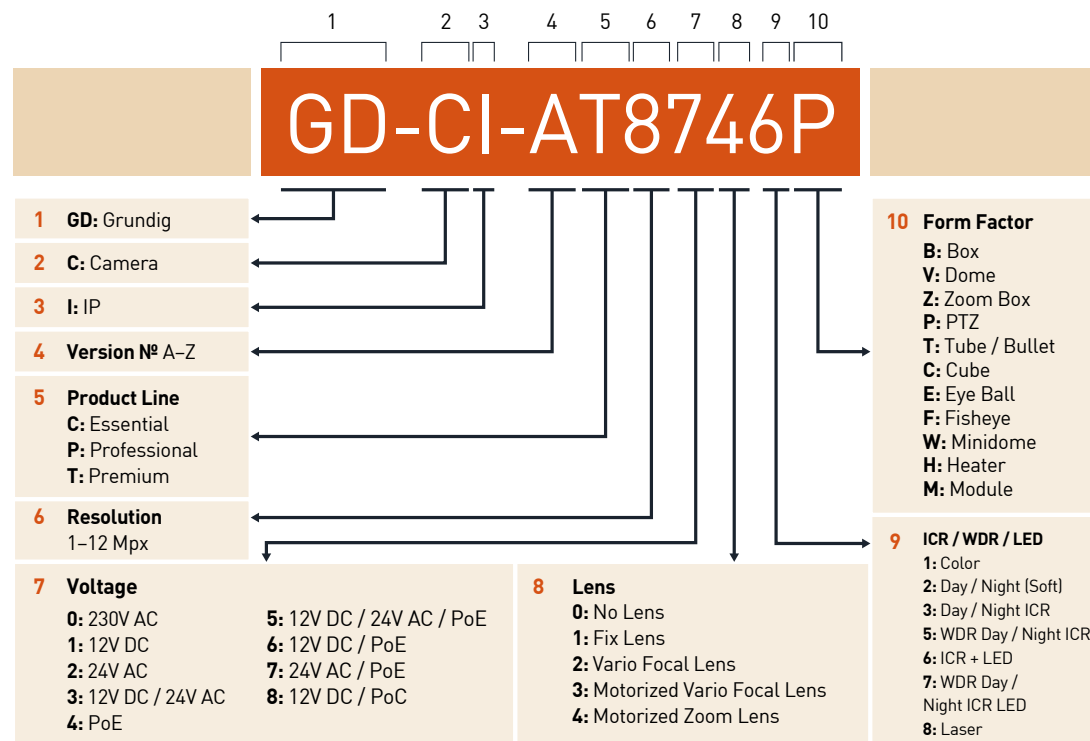


**GD-LF-BT3611D-IR**



**GD-LF-BT1150D-IR**

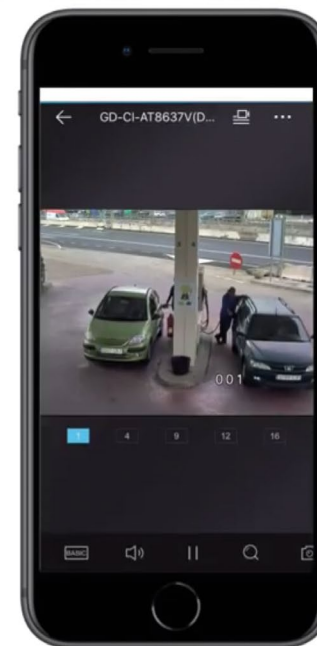
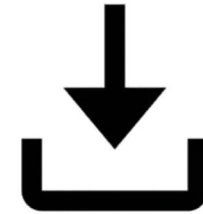
	Essential	Essential	Premium	Premium
Lens Focal Length	5 ~ 50 mm	3.6 ~ 11 mm	11 ~ 50 mm	11 ~ 50 mm
Iris F-Number	F= 1.4 ~ 360	F= 1.5 ~ 360	F= 1.4 ~ 360	F= 1.4 ~ 360
Lens Drive Type	Auto Iris (DC)	Auto Iris (DC)	Auto Iris (DC)	Auto Iris (DC)
Lens Mount	CS mount	CS mount	CS mount	CS mount
Material	Aluminium alloy	Polycarbonate and Glass Fiber	Aluminium alloy	Aluminium alloy
Max. Image Format	1/2,7"	1/1.8"	1/1.8"	1/1.8"
Minimum Object Distance	0.5 m	0.2 m	1.5 m	1.5 m



# THE SCMS APP BY GRUNDIG SECURITY: INSTALLED & CONFIGURED IN NO TIME!

Supreme Central Monitoring Service is a surveillance application for mobile phone and tablet supporting the full line of surveillance products, including NVRs, DVRs, as well as network cameras and speed domes that support cloud P2P function. The Mobile Software App has been designed to help small businesses effectively operate and manage security devices from a smartphone or tablet. The power to view live images, play back footage, and receive notifications remotely keeps owners and operators in touch with their business, even when away.

- Real-time video preview of up to 16 channels
- Swipe for PTZ control and camera movement, pinch to zoom in/out in preview mode
- Preset activation and configuration as well as brightness calibration supported
- Push alarm notification
- Snapshot function
- Manage up to 256 device sets; add/delete/modify device profiles



[www.grundig-security.com](http://www.grundig-security.com)

Abetechs GmbH (Grundig Security)  
[info@grundig-security.com](mailto:info@grundig-security.com)

Errors excepted | Grundig reverses the right to change specifications without notice | ABETECHS GMBH 2024

**GRUNDIG**