

# Product Overview 2026

## *Video Security*

SMART Product Line

**GRUNDIG**



# What can you expect from the SMART product line from GRUNDIG Security?

Leaving our tried and tested reliability aside, you will also find a whole lot of image analysis functions, supported by artificial intelligence (AI). And there's a lot of functionality available. You can use facial recognition, for instance, to recognise people, or the LPR function to identify vehicle licence plates. Or you can quite simply reduce the frequency of false alarms signalling a spurious break-in or perimeter breach, by classifying objects as 'vehicle', 'person' or 'other'.

The SMART cameras from GRUNDIG Security can recognise faces in crowds of people, count heads and determine the length of queues at your supermarket till, therefore helping you to make the best possible use of your resources. They'll let you know when unauthorised people cross pre-defined lines or enter certain areas, and they'll trigger an alarm when objects are left at your doorstep.

These are just a few examples out of a plethora of possibilities which the exceptionally flexible SMART line products from GRUNDIG Security are able to offer.

So, if you want more than just pretty pictures and long recording times, please get in touch.

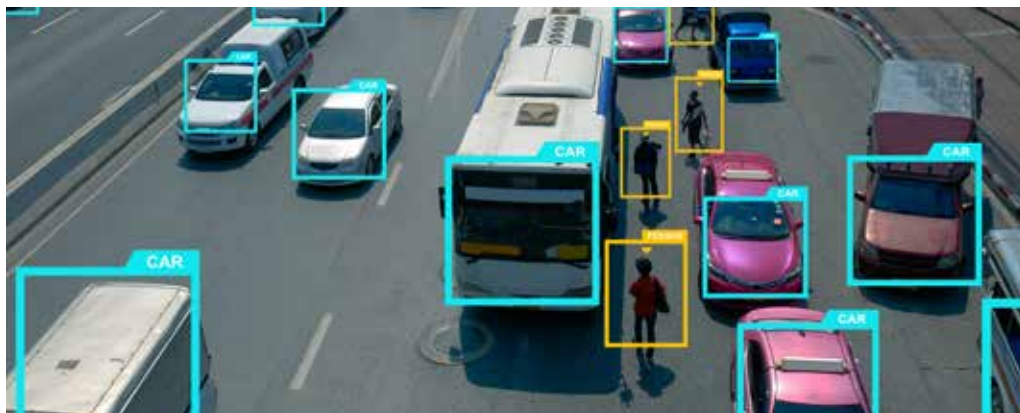
We look forward to hearing from you!



## Content

Image analysis function .....	3
IP Cameras	
Eyeball .....	6
Fix Dome .....	7
Bullet .....	8
Fisheye   Speed Dome   Panorama .....	10
Thermal .....	11
Recorders .....	12
Monitors .....	14
Switches .....	15
Mobile App .....	16
Software, Tools, Apps, Storage Media .....	17
Accessories .....	18
Technology: SMART Image Sensor & P-Iris .....	20
General Information.....	22
Links to Demo Videos .....	23

## Classify persons & vehicles



The GRUNDIG Security Smart Line cameras allow for clear classification of people and vehicles. This enables users, e.g. control centre operators, to define alarm events and responses even more precisely. The bidirectional audio function also allows direct communication with people on site.

## Identify licence plates



The licence plate recognition function enables reliable and automated access control, for example on a company's premises. The legitimisation of the respective vehicle is regulated via black and white lists.

## Identify faces



As soon as a face is recognised, alarm information, including attributes such as gender and age, is reported. The data is compared with the database: If the face is not stored in the database, it is recognised as "unknown". Wearing a face mask can also be defined as a recognition attribute.



## Enter area



The “enter area” detection function allows the precise definition of areas. As soon as someone enters the defined area, an alarm message is triggered. The moving object is classified as a person, motorised or non-motorised vehicle. Four different customisable rules are available for the alarm response.

## Detect left/removed objects



The “left/removed objects” detection function offers two usage options: objects located in a predefined area can be quickly identified. The function can also be used to detect the removal of any objects in this area.

## Manage queues



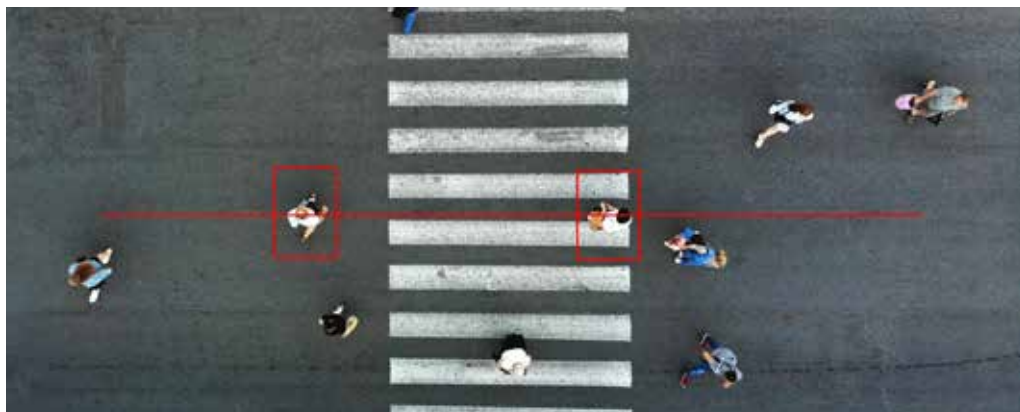
An alarm will be triggered as soon as a queue reaches a certain length. Alternatively, this function can be used to trigger an event by exceeding a certain dwell time.

## Use Heat Map



The heat map function facilitates the identification of areas where people prefer to stay or which are less frequented.

## Cross lines



If "Line crossing" is activated, crossing a previously defined line triggers an alarm message. The corresponding object is classified as a person, motorised or non-motorised vehicle. Four different customisable rules are available for the alarm response.

## Analyse crowds



An alarm is triggered as soon as the set number of people in a predefined area is exceeded. An acoustic message can also be emitted.

## Count people/objects



The "people/object counting" analysis function reliably counts people, moving objects as well as motorised or non-motorised vehicles, also in two different directions. By means of powerful reports, the collected data can be evaluated for further use.

## Detect unusual noises



This audio analysis function detects unusual noises such as barking dogs, baby crying and gunshots, thereby triggering an alarm. The sensitivity of this function can be adjusted infinitely.

**GU-CI-AC5617E****GU-CI-AC5617EB****GU-CI-AC5637E****GU-CI-AC8616E**

	Smart	Smart	Smart	Smart
Video Resolution	2880 x 1620	2880 x 1620	2880 x 1620	3840 x 2160
Sensitivity Colour	0.004 Lux @ F1.6 (AGC ON)	0.004 Lux @ F1.6 (AGC ON)	0.004 Lux @ F1.6 (AGC ON)	0.009 Lux @ F1.6 (AGC ON)
Lens Focal Length	2.8 mm	2.8 mm	2.8 ~ 12 mm motorized, autofocus	2.8 mm
Col/B&W	Auto, IR-cut filter removable (ICR)			
Wide Dynamic Range	120 dB			Digital WDR
Image Enhancement	BLC, 3D DNR, HLC			
Max. IR Distance	Up to 30 m		Up to 45 m	Up to 30 m
Video Compression	H.264, H.264+, H.265, H.265+ , MJPEG			
SD Memory	Built-in Micro SD, up to 512 GB, NAS (supports NFS, SMB/CIFS)			
Audio Input/Output	Built-in microphone		1-ch input and 1-ch output	Built-in microphone
Audio Detection	Detects unusual noises: dogs barking, babies crying, gunshots, sudden sound increase and decrease			
License plate Recognition	If SD-card is applied or Smart recorder is connected			-
Intelligent Analytics Functions	Detection of Motion, People & Vehicle, Intrusion, Line Crossing, Object Removal, Object Counting, Faces, Queue Length and/or Crowd Density Detection as well as Heat Map			
Operating Temperature	-35 °C ~ 60 °C (-31 °F ~ 140 °F)			
Supply Voltage	12 VDC, PoE (802.3af)			
Power Consumption	Max. 5.5 W		Max. 9.5 W	Max. 5.5 W



**GU-CI-AC5617V****GU-CI-AC5617VB****GU-CI-AC5617W****GU-CI-AC5637V****GU-CI-AC5637VB****GU-CI-AC8616V**

	Smart	Smart	Smart	Smart	Smart	Smart
Video Resolution	2880 x 1620	2880 x 1620	2880 x 1620	2880 x 1620	2880 x 1620	3840 × 2160
Sensitivity Colour	0.004 Lux @ F1.6 (AGC ON)	0.004 Lux @ F1.6 (AGC ON)	0,004 Lux @ F1.6 (AGC ON)	0.004 Lux @ F1.6 (AGC ON)	0.004 Lux @ F1.6 (AGC ON)	0.009 Lux @ F1.6 (AGC ON)
Lens Focal Length	2.8 mm	2.8 mm	2,8 mm	2.8 ~ 12 mm motorized, autofocus	2.8 ~ 12 mm motorized, autofocus	2.8 mm
Col/B&W	Auto, IR-cut filter removable (ICR)					
Wide Dynamic Range	120 dB					Digital WDR
Image Enhancement	BLC, 3D DNR, HLC					
Max. IR Distance	Up to 20 m			Up to 30 m		Up to 20 m
Video Compression	H.264, H.264+, H.265, H.265+ , MJPEG					
SD Memory	Built-in Micro SD, up to 512 GB, NAS (supports NFS, SMB/CIFS)					
Audio Input/Output	Built-in microphone			1-ch input and 1-ch output		Built-in microphone
Audio Detection	Detects unusual noises: dogs barking, babies crying, gunshots, sudden sound increase and decrease					
License plate Recognition	If SD-card is applied or Smart recorder is connected					-
Intelligent Analytics Functions	Detection of Motion, People & Vehicle, Intrusion, Line Crossing, Object Removal, Object Counting, Faces, Queue Length and/or Crowd Density Detection as well as Heat Map					
Operating Temperature	-35 °C ~ 60 °C (-31 °F ~ 140 °F)					
Supply Voltage	12 VDC, PoE (802.3af)					
Power Consumption	Mas. 5.5 W		Max. 4 W	Max. 7 W		Max. 5.5 W





**GU-CI-AC5617T****GU-CI-AC5617TB****GU-CI-AC5637T****GU-CI-AC8616T**

	Smart	Smart	Smart	Smart
Video Resolution	2880 x 1620	2880 x 1620	2880 x 1620	3840 x 2160
Sensitivity Colour	0.004 Lux @ F1.6 (AGC ON)	0.004 Lux @ F1.6 (AGC ON)	0.004 Lux @ F1.6 (AGC ON)	0.009 Lux @ F1.6 (AGC ON)
Lens Focal Length	3.6 mm	3.6 mm	2.8 ~ 12 mm motorized, autofocus	3.6 mm
Col/B&W	Auto, IR-cut filter removable (ICR)			
Wide Dynamic Range	120 dB		120 dB	Digital WDR
Image Enhancement	BLC, 3D DNR, HLC			
Max. IR Distance	Up to 30 m		Up to 45 m	Up to 30 m
Video Compression	H.264, H.264+, H.265, H.265+ , MJPEG			
SD Memory	Built-in Micro SD, up to 512 GB, NAS (supports NFS, SMB/CIFS)			
Audio Input/Output	Built-in microphone		1-ch input and 1-ch output	Built-in microphone
Audio Detection	Detects unusual noises: dogs barking, babies crying, gunshots, sudden sound increase and decrease			
License plate Recognition	If SD-card is applied or Smart recorder is connected			-
Intelligent Analytics Functions	Detection of Motion, People & Vehicle, Intrusion, Line Crossing, Object Removal, Object Counting, Faces, Queue Length and/or Crowd Density Detection as well as Heat Map			
Operating Temperature	-35 °C ~ 60 °C (-31 °F ~ 140 °F)			
Supply Voltage	12 VDC, PoE (802.3af)			
Power Consumption	Max. 5.5 W		Max. 9.5 W	Max. 5.5 W





**GU-CI-AP4634T****GU-CI-AP5634T****GU-CI-AP8634T****GU-CI-BP8634T**

	Smart	Smart	Smart	Smart
Video Resolution	2560 x 1440	2880 x 1620	3840 x 2160	3840 x 2160
Sensitivity Colour	0.0005 Lux @ F1.0 (AGC ON)	0.004 Lux @ F1.6 (AGC ON)	0,0008 Lux @ F1.7 (AGC ON)	0,0008 Lux @ F1.7 (AGC ON)
Lens Focal Length	2.8 ~ 12 mm motorized, autofocus	5 ~ 50 mm motorized, autofocus	2,8 ~ 12 mm, motorized, autofocus, P-IRIS	8 ~ 32 mm, motorized, autofocus, P-IRIS
Col/B&W	Auto, IR-cut filter removable (ICR)			
Wide Dynamic Range	120 dB	120 dB	120 dB	120 dB
Image Enhancement	BLC, 3D DNR, HLC, Defog	BLC, 3D DNR, HLC	BLC, 3D DNR, HLC, DIS	
Max. IR Distance	Up to 50 m	Up to 80 m	Up to 50 m	Up to 100 m
Video Compression	H.264, H.264+, H.265, H.265+ , MJPEG			
SD Memory	Built-in Micro SD, up to 512 GB, NAS (supports NFS, SMB/CIFS)			
Audio Input/Output	1 input: Line/microphone input and built-in microphone, 1 output: Line output and built-in speaker			
Audio Detection	Detects unusual noises: dogs barking, babies crying, gunshots, sudden sound increase and decrease			
License plate Recognition	If SD-card is applied or Smart recorder is connected			
Intelligent Analytics Functions	Detection of Motion, People & Vehicle, Intrusion, Line Crossing, Object Removal, Object Counting, Faces, Queue Length and/or Crowd Density Detection as well as Heat Map			
Operating Temperature	-35 °C ~ 60 °C (-31 °F ~ 140 °F)			
Supply Voltage	12 VDC, PoE (802.3af)			
Power Consumption	Max. 9.5 W		Max. 13.5 W	



**GU-CI-AP12616F****GU-CI-AP4634V****GU-CI-AP5647P****GU-CI-AP8744P****GU-CI-AP8616Q****GU-CI-AP20527Q****GU-CI-AT32637Q**

	Smart	Smart	Smart	Smart	Smart	Smart	Smart
Video Resolution	4000 × 3000	2560 x 1440	2592 x 1944	3840 x 2160	5120 x 1440	2880 x 1620	3840 x 2160
Sensitivity Colour	0.01 Lux @ F1.6 (AGC ON)	0,001 Lux @ F1.6 (AGC ON)	0.003 Lux @ F1.6 (AGC ON)	0,0005 Lux @ F1.6 (AGC ON)	0.001 Lux @ F 1.6 (AGC ON)	0.006 Lux @ F1.2 (AGC ON)	
Lens Focal Length	1.6 mm	2,8~12 mm motorisiert, Auto-fokus	4.3 ~ 142 mm motorized, autofocus	5,5 ~ 202 mm motorisiert, Autofokus	2 x 2.8 mm	4 x 2,8 ~ 12 mm motorized, autofocus	
Col/B&W	Auto, Color, Removable IR-Cut Filter (ICR)						
Wide Dynamic Range	Digital WDR	120 dB			Digital WDR	120 dB	
Image Enhancement	BLC, 3D DNR, HLC	BLC, 3D DNR, HLC, Defog	BLC, 3D DNR, HLC	BLC, 3D DNR, HLC, DIS	BLC, 3D DNR, HLC	BLC, 3D DNR, Defog, HLC	
Max. IR Distance	Up to 10 m	Up to 20 m	Up to 150 m	Bis zu 200 m	Up to 30 m		
Video Compression	H.264, H.264+, H.265, H.265+ , MJPEG						
SD Memory	Built-in Micro SD, up to 512 GB, NAS (supports NFS, SMB/CIFS)						
Audio Input/Output	Built-in microphone & built-in speaker	1-ch input and 1-ch output		1 input: Line/microphone input and built-in microphone, 1 output: Line output and built-in speaker	Built-in microphone & built-in speaker	1-ch input and 1-ch output	
Audio Detection	Sudden sound increase and decrease	Detects unusual noises: dogs barking, babies crying, gunshots, sudden sound increase and decrease				Sudden sound increase and decrease	
License plate Recognition	-	If SD-card is applied or Smart recorder is connected					
Intelligent Analytics Functions	Motion detection	Detection of Motion, People & Vehicle, Intrusion, Line Crossing, Object Removal, Object Counting, Faces, Queue Length and/or Crowd Density Detection as well as Heat Map					
Operating Temperature	-35 °C ~ 60 °C (-31 °F ~ 140 °F)	-30 °C ~ 60 °C (-22 °F ~ 140 °F)	-35 °C ~ 60 °C (-31 °F ~ 140 °F)	-30 °C ~ 60 °C (-22 °F ~ 140 °F)	-30 °C ~ 60 °C (-22 °F ~ 140 °F)	-30 °C ~ 55 °C (-22 °F ~ 131 °F)	
Supply Voltage	12 VDC, PoE (IEEE 802.3af)		12 VDC, PoE (IEEE 802.3at)	36 V DC, 24 V AC, PoE (IEEE 802.3bt)	12 VDC, PoE (IEEE 802.3af)	12 VDC, 24 V AC, Hi-PoE (IEEE 802.3bt)	
Power Consumption	Max. 9.5 W	Max. 13 W	Max. 25 W	Max. 45 W	Max. 13.5 W	Max. 34 W	Max. 43 W





GU-TI-AP4603E



GU-TI-AP4607E



GU-TI-AP4603T



GU-TI-AP4607T

	Smart	Smart	Smart	Smart
Thermal Sensor	Vanadium Oxide Uncooled Focal Plane Array			
Resolution (Thermal)	256 x 192			
NETD	< 40 mk (@25° C, F=1.0)			
Viewing Angle (IR)	56° x 42° (HxV)	25° x 18.7° (HxV)	56° x 42° (HxV)	25° x 18.7° (HxV)
Detector Pitch	12 µm			
Image Sensor	1/2.7" progressive Scan CMOS			
Video Resolution	2592 x 1944			
Sensitivity Colour	0.003 Lux @ F1.6 (AGC ON)			
Lens Focal Length	3.6 mm	8 mm	3.6 mm	8 mm
Video Compression	H.264, H.264+, H.265, H.265+ , MJPEG			
Accuracy	± 3°C / 3%			
Measurement option	Support 3 temperature measurement rule types (12 points, 12 regions and 12 lines)			
Intelligent Analytics Functions	Detection of Motion, People & Vehicle, Intrusion, Line Crossing, Object Removal, Object Counting, Faces, Queue Length and/or Crowd Density Detection as well as Heat Map			
Operating Temperature	-35 °C ~ 60 °C (-31 °F ~ 140 °F)			
Supply Voltage	12 VDC, PoE (IEEE 802.3af)			
Power Consumption	Max. 9.5 W		Max.11 W	





**GU-RN-AC8104P****GU-RN-AC8108P****GU-RN-AC8116P****GU-RN-AP8216N**

	Smart	Smart	Smart	Smart
IP Inputs	4 channels	8 channels	16 channels	16 channels
Recording Bandwidth	max. 50 Mbps	128 Mbps	112 Mbps	256Mbps
Outgoing Bandwidth	max. 64 Mbps	128 Mbps	96 Mbps	128 Mbps
Recording Resolution	8 MP, 5 MP, 3 MP, 1080p, 960p, 720p	12 MP, 8 MP, 5 MP, 3 MP, 1080p, 960p, 720p		
Video Compression	H.264, H.264+, H.265, H.265+ , MJPEG			
Recording Mode	Continuous, Event Alarm, Motion, Schedule			
Search Mode	Date, Time, Event Alarm, Motion, Search Backup			
Smart Search Function	Search for people, motorized vehicles, non-motorized vehicles, intrusion and line crossing, thumbnails, tags, faces and characteristics, attendance, visit frequency and license plates			
External Backup	USB HDD, USB Memory, Network			
HDMI Output	4K (3840 × 2160), 2K (2560 × 1440), 1920 × 1080, 1600 × 1200, 1900 × 1200, 1440 × 900, 1280 × 1024, 1280 × 720, 1024 × 768			HDMI1: 3840 x 2160 (EDID/4K),2560 x 1440, 1920 × 1080, 1440 x 900, 1280 x 1024, 1280 x 720, 1024 x 768 HDMI2: 1920 × 1080, 1440 x 900, 1280 × 1024, 1280 × 720, 1024 × 768
Harddisk bay	1 x SATA III, 1 x eSATA		2 x SATA III	2 x SATA III, 1 x eSATA
Max. Storage Capacity	Up to 10TB capacity for each HDD			
Audio Input/Output	1-ch input and 1-ch output			
Alarm Input/Output	4/1	8/1	8/1	16/1
Power over Ethernet	4 independent 10, 100 Mbps PoE Ethernet interfaces	8 independent 10, 100 Mbps PoE Ethernet interfaces	16 independent 10, 100 Mbps PoE Ethernet interfaces	—
Supply Voltage	48 VDC, Power Adapter 100 ~ 240 VAC 50, 60Hz included			12 VDC ±10%
Power Consumption	≤ 5 W without harddisk	≤ 6 W without harddisk	≤ 8 W without harddisk	≤ 18 W without harddisk

**GU-RN-AP8232N****GU-RN-AP8864N****GU-RN-BT816256N**

	Smart	Smart	Smart
IP Inputs	32 channels	64 channels	256 channels
Recording Bandwidth	256 Mbps	640 Mbps	1024 Mbps
Outgoing Bandwidth	128 Mbps	640 Mbps	800 Mbps
Recording Resolution	12 MP, 8 MP, 5 MP, 3 MP, 1080p, 960p, 720p		
Video Compression	H.264, H.264+, H.265, H.265+ , MJPEG		
Recording Mode	Continuous, Event Alarm, Motion, Video Loss, Schedule		
Search Mode	Date, Time, Event Alarm, Motion, Search Backup		
Smart Search Function	Search for people, motorized vehicles, non-motorized vehicles, intrusion and line crossing, thumbnails, tags, faces and characteristics, attendance, visit frequency and license plates		
External Backup	USB HDD, USB Memory, Network		
HDMI Output	HDMI1: 3840x2160 (EDID/4K), 2560 x 1440, 1920 × 1080, 1440 x 900, 1280 x 1024, 1280 x 720, 1024 x 768 HDMI2: 1920 × 1080, 1440 x 900, 1280 × 1024, 1280 × 720, 1024 × 768	HDMI1, 2 & 3: 3840 x 2160 (EDID/4K), 2560 x 1440, 1920 × 1080, 1440 x 900, 1280 x 1024, 1280 x 720, 1024 x 768 HDMI4: 1920 × 1080, 1440 x 900, 1280 × 1024, 1280 × 720, 1024 × 768	
Harddisk bay	4 x SATA III, 1 x eSATA	8 x SATA III, 1 x eSATA	16 x SATA III, 1 x e-SATA
Max. Storage Capacity	Up to 10TB capacity for each HDD	Up to 12 TB capacity for each HDD	Up to 16 TB capacity for each HDD, hot swappable
Audio Input/Output	1-ch input and 1-ch output		
Alarm Input/Output	16/1	16/4	
Power over Ethernet	—		
Supply Voltage	12 VDC, Power Adapter 100 ~ 240 VAC 50, 60Hz included	100 ~ 240 VAC, 50Hz / 60Hz	2 x 100 ~ 240 VAC, 50Hz / 60Hz, redundant power supply
Power Consumption	≤ 12 W without harddisk	≤ 8 W without harddisk	



**GD-ML-DP2230HD    GD-ML-DP2430HD    GD-ML-DP2730HD**

	Professional	Professional	Professional
LCD Panel size	54.6 cm (21, 5") Diagonal AM-TFT LED Backlight	59.9 cm (23.6") Diagonal AM-TFT LED Backlight	68.5 cm (27") Diagonal AM-TFT LED Backlight
Pixels Total	1920 (H) x 1080 (V)		
Pixel Pitch	0.248 mm (H) x 0.248 mm (V)		
Aspect Ratio	16 : 9		
Video Standard	PAL, NTSC		
Video Inputs	1x HDMI, 1x VGA, 1x USB		
Brightness	300 cd, m²		
Contrast Ratio	1000:1		
Number of Colours	16.7 million		
Viewing Angle	170° (H) ~ 160° (V)		
Response Time	5 ms		
Audio Inputs	1-ch, RCA (2.0 Vp-p, 1kΩ)		
Speakers	2 x 2 W		
Vesa Mount	75 x 75 mm	100 x 100 mm	75 x 75 mm
OSD (On Screen Display)	Yes, multi language		
Accessories included	Power Adapter and HDMI cable		
Regulation	CE, EAC, FCC, RoHS Compliant		
Power Consumption	Max. 21 W	Max. 24 W	
Supply Voltage	12 VDC, Power Adapter 100 ~ 240 VAC 50, 60Hz included		

## THE SMART LINE FROM GRUNDIG SECURITY: NDAA COMPLIANT

NDAA is the abbreviation for the National Defense Authorization Act. The John S. McCain National Defense Authorization Act (NDAA) for Fiscal Year 2019 was signed into law on August 13, 2018 and effective from August 2020.

The law, specifically Section 889, prohibits federal agencies, their contractors and grant or loan recipients from procuring or using “telecommunications and video surveillance equipment or services” from specific Chinese companies as a “substantial or essential component of any system, or as critical technology as part of any system.”

The SMART product line from GRUNDIG Security complies with the requirements of this law.

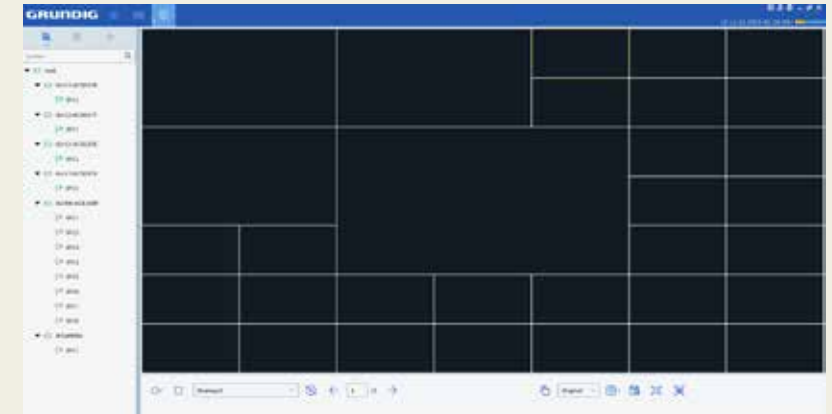






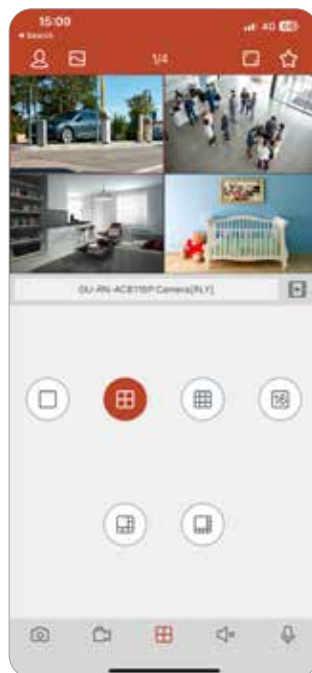
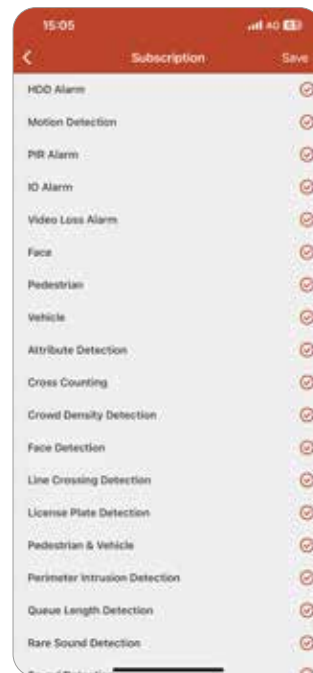
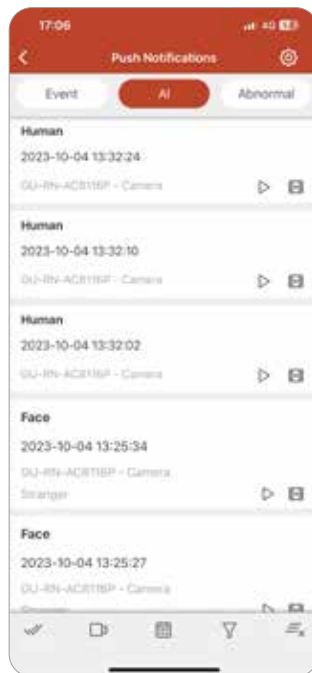
	<b>GU-HW-ACSW04D</b>	<b>GU-HW-ACSW08D</b>	<b>GU-HW-ACSW16R</b>
	<b>Smart</b>	<b>Smart</b>	<b>Smart</b>
Interfaces (Ports)	4x 10/100M PoE + 1x 10/100M	8x 10/100M PoE + 1x 100/1000M	16x 10/100M PoE + 2x 100/1000M
PoE Specification	802.3af/at (PSE)		
Switch Throughput	1 Gbps	3.6 Gbps	7.2 Gbps
ISO Standard	802.3802.3x802.3u802.3az		
PoE Budget	52 W	65 W	225 W
Max. Power Output per Port	30 W max. (Individual Port)		
Bit Rate	Uplink/Downlink Rate 100 Mbps	Uplink/Downlink Rate 1000 Mbps	
Internal Cache	1 Mbit/s	4,1 Mbit/s	2,75 Mbit/s
Packet Forwarding Rate	0.7 Mpps	2.6 Mpps	5.36 Mpps
Material	Metal		
Operating Temperature	0 °C ~ +40 °C		
Supply Voltage	48 VDC, 100~240 VAC, 50/60 Hz Power Adapter included		100~240 VAC, 50/60 Hz
Power Consumption	Max. 58 W	Max. 72 W	Max. 400 W
Dimensions (W x H x D)	110 x 82 x 30 mm (4.3 x 3.2 x 1.2 inch)	173 x 82 x 30 mm (6.8 x 3.2 x 1.2 inch)	440 x 221 x 44 mm (17.3 x 8.7 x 1.7 inch)
Weight	222 g (0,49 lb)	380 g (0,84 lb)	2900 g (6,39 lb)

## CONFIGURATION AND MANAGEMENT THROUGH GU-SW-VMS



The configuration and management of the Smart-Managed PoE switches can be conveniently handled through the free software GU-SW-VMS from GRUNDIG Security. The software is also compatible with all other devices of the SMART product line from GRUNDIG Security.

- Integration of SMART line cameras and recorders
- Device management and recording
- Freely configurable views
- Comprehensive AI event search function
- Local recording of signals from all connected devices
- Live image display and playback of recorded images and video sequences
- Remote configuration of connected SMART line devices
- AI database management, e. g. face recognition
- Embedding of images, floor plans, and/or maps



## THE GSVM APP BY GRUNDIG SECURITY: INSTALLED AND CONFIGURED IN NO TIME

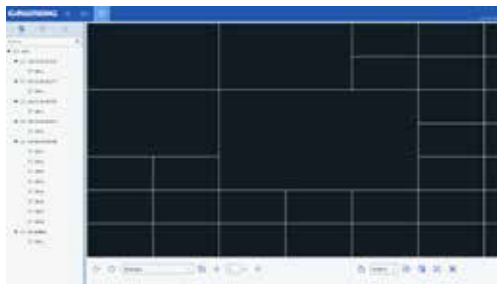
The GSVM app is a surveillance application for mobile phones and tablets.

The Mobile Software App has been designed to help small businesses effectively operate and manage security devices from anywhere and at anytime.

The power to view live images, play back footage, and receive notifications remotely keeps owners and operators in touch with their business, even when away.

- Real-time video preview of up to 16 channels
- Live control of PTZ Cameras
- Remote configuration of connected devices
- Display the cause of alarm triggering
- Push alarm notification
- Snapshot function
- Integration of devices via P2P cloud and IP-address

## SMART PRODUCT LINE: SOFTWARE, APPS & TOOLS



### GU-SW-VMS

SMART Line PC Software



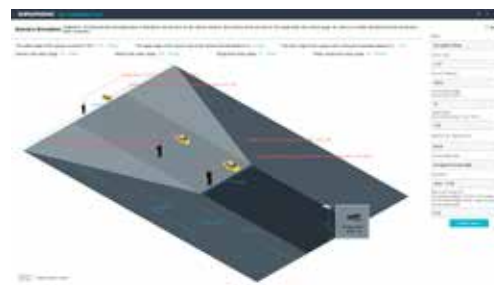
### GU-SW-IP-FINDER

SMART Line Tool for device connection, configuration and management



### GU-SW-PLAYER

SMART Line Video Player



### GU-SW-INST-TOOL

SMART Line Tool for camera setup

## DID YOU KNOW?

For real-time video preview and remote parameterization of the connected cameras and recorders, there is also a mobile GSVM app available for iOS and Android, in addition to the desktop application, naturally also available for free. For more details, see page 9.

GSVM APP  
IOS



GSVM APP  
ANDROID



## STORAGE MEDIA

### HARDDISKS



GD-HW-HDD-2TB

3,5" HDD 2TB – surveillance class

GD-HW-HDD-4TB

3,5" HDD 4TB – surveillance class

GD-HW-HDD-8TB

3,5" HDD 8TB – surveillance class

GD-HW-HDD-10TB

3,5" HDD 10TB – surveillance class

GD-HW-HDD-12TB

3,5" HDD 12TB – surveillance class

GD-HW-HDD-14TB

3,5" HDD 14TB – surveillance class

Other harddisk capacities upon request!

### SD CARDS



GD-HW-SD-128GB

Micro SD card 128GB Western Digital Purple

GD-HW-SD-256GB

Micro SD card 256GB Western Digital Purple



GU-CI-AC5617E  
GU-CI-AC8616EGU-BR-AJX01  
Junction Box Pendant MountGU-BR-AJX02  
Junction BoxGU-BR-AJX02B  
Junction Box

GU-CI-AC5617EB

GU-BR-AJX03  
Junction BoxGU-BR-AJX04  
Junction BoxGU-BR-AMW04  
Wall Mount BracketGU-BR-AMW04B  
Wall Mount Bracket

GU-CI-AC5637E

GU-BR-AJX11  
Junction BoxGU-BR-AMW05  
Wall Mount BracketGU-CI-AC5617V  
GU-CI-AC8616VGU-BR-AJX09  
Junction Box Pendant MountGU-BR-AJX10  
Junction BoxGU-BR-AJX10B  
Junction Box

GU-CI-AC5617VB

GU-BR-AMF02  
Flush Mount AdapterGU-BR-AMW04  
Wall Mount BracketGU-BR-AMW04B  
Wall Mount Bracket

GU-CI-AC5637V

GU-BR-AJX06  
Junction BoxGU-BR-AJX06B  
Junction Box

GU-CI-AC5637VB

GU-BR-AJX07  
Junct. Box Pendant MountGU-BR-AJX07B  
Junct. Box Pendant MountGU-BR-AJX08  
Dual Junction Box incl. PoE SwitchGU-BR-AMF01  
Flush Mount AdapterGU-BR-AMW02  
Wall Mount BracketGU-BR-AMW05  
Wall Mount BracketGU-BR-AMW05B  
Wall Mount BracketGU-BR-ASN01  
Sunshield for Fixed Dome Cameras

GU-CI-AP4634V

GU-BR-AJX12  
Junction BoxGU-BR-AJX14  
Junction BoxGU-BR-AMW05  
Wall Mount BracketGU-CI-AC5617T  
GU-CI-AC8616TGU-BR-AJX01  
Junction Box Pendant MountGU-BR-AJX02  
Junction BoxGU-BR-AJX02B  
Junction Box

GU-CI-AC5617TB

GU-BR-AJX03  
Junction BoxGU-BR-AJX04  
Junction BoxGU-BR-AJX05  
Junction Box Hinged

GU-CI-AC5637T

GU-BR-AJX01  
Junction Box Pendant MountGU-BR-AJX02  
Junction BoxGU-BR-AJX03  
Junction BoxGU-BR-AJX04  
Junction BoxGU-BR-AJX05  
Junction Box HingedGU-BR-AML01  
Pole Mount BracketGU-CI-AP4634T  
GU-CI-AP5634T  
GU-CI-AP8634T  
GU-CI-BP8634TGU-BR-AML01  
Pole Mount BracketGU-BR-AMC01  
Corner Mount Bracket

GU-CI-AP12616F

GU-BR-AJX13  
Junction Box for Fisheye CameraGU-BR-AMP02  
Pendant Mount Bracket for  
Fisheye Camera



GU-CI-AP5647P  
GU-CI-AP8744P



GU-CI-AP20257Q  
GU-CI-AT32637Q



GD-BR-AMA01  
Parapet Wall Mount



GD-BR-AMC04  
Corner Mount Bracket Junction Box



GD-BR-AMP01  
Pendant Mount Bracket (long)



GD-BR-AMP04  
Pendant Mount Bracket (medium long)



GD-BR-AMP06  
Pendant Mount Bracket (short)



GD-BR-AMP07  
Pendant Mount Bracket extendable



GD-BR-AMS01  
Swan Neck Mount



GD-BR-AMW09  
Wall/Pole Mount Bracket



GD-BR-AWJ03  
Wall Mount Bracket with Junction Box



GU-CI-AP8616Q



GU-BR-AJX03  
Junction Box



GU-BR-AJX04  
Junction Box



GU-BR-AJX08  
Dual Junction Box incl. PoE Switch



GU-BR-AMW05  
Wall Mount Bracket



GU-TI-AP4603E  
GU-TI-AP4607E



GU-BR-AJX03  
Junction Box



GU-BR-AJX08  
Dual Junction Box incl. PoE Switch



GU-BR-AMW05  
Wall Mount Bracket



GU-TI-AP4603T  
GU-TI-AP4607T



GU-BR-AML01  
Pole Mount Bracket



GU-BR-AMC01  
Corner Mount Bracket



GU-BR-AJX01



GU-BR-AMP01  
Pendant Mount Bracket



GU-BR-AMW01  
Wall Mount Bracket



GU-BR-AJX03



GU-BR-AML01  
Pole Mount Bracket



GU-BR-AJX07



GU-BR-AMP01  
Pendant Mount Bracket



GU-BR-AMW01  
Wall Mount Bracket



GU-BR-AJX08



GD-BR-AMW08  
Wall Mount Bracket for PTZ Domes



GU-BR-AJX08A  
Adapter Junction Box



GU-BR-AJX09



GU-BR-AMP01  
Pendant Mount Bracket



GU-BR-AMW01  
Wall Mount Bracket



GU-BR-AJX11



GU-BR-AML01  
Pole Mount Bracket



GU-BR-AJX12



GU-BR-AMP01  
Pendant Mount Bracket



GU-BR-AMW01  
Wall Mount Bracket



GU-BR-AJX13



GU-BR-AMP01  
Pendant Mount Bracket



GU-BR-AMW01  
Wall Mount Bracket



GU-BR-AMW01



GU-BR-AMC01  
Corner Mount Bracket



GU-BR-AML01  
Pole Mount Bracket

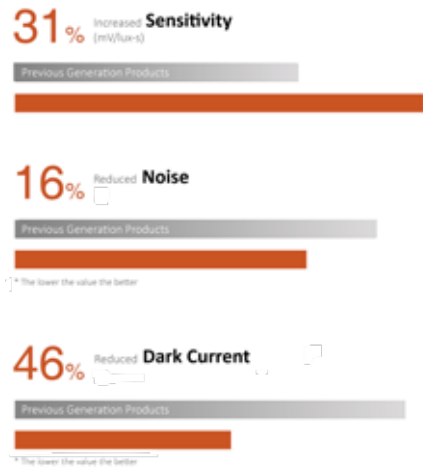


GU-BR-AMW02



GU-BR-AML01  
Pole Mount Bracket

SC533HAI WIDESCREEN SMART IMAGE SENSOR FOR 5 MEGAPIXEL CAMERAS



SC533HAI  
WIDE FORMAT

Goes beyond the scope of human vision and broadens the horizon



With the innovative SC533HAI Widescreen Smart Image Sensor for all 5 megapixel cameras in our NDAA-compliant SMART product line, GRUNDIG Security enhances the visual experience on modern LCD displays, bridging the gap between image output and natural human vision.

Thanks to SmartClarity Technology, the SC533HAI sensor increases the number of pixels by 20% compared to many 5MP products on the market. Instead of cropping a 5MP 4:3 image down to 4 megapixels, the full resolution of the sensor is utilized to achieve a true 16:9 aspect ratio with 1620P.

This effectively reduces dark edges and distortion on both sides of the image caused by uneven scaling while achieving a true 16:9 aspect ratio with an additional 10% horizontal viewing area.

The SC533HAI sensor boasts improved sensitivity and reduced noise, even under high-temperature conditions, thanks to the unique SFCPixel® technology.

The PixGain® technology also enables excellent High Dynamic Range (HDR) performance, even under glaring sunlight.

## 8 MEGAPIXEL SMART LINE CAMERAS WITH P-IRIS TECHNOLOGY FOR OPTIMAL IMAGE SHARPNESS

P-Iris (short for Precision Iris) is an advanced, automatically controlled iris mechanism used in surveillance cameras and machine vision systems. It allows precise control of the lens aperture using a stepper motor, offering better image quality than traditional Auto Iris (DC-Iris) systems.

### Key Features of P-Iris:

- Precise aperture adjustment via a stepper motor.
- Maintains optimal image sharpness and depth of field, even under changing lighting conditions.
- Works in coordination with the camera's software, not just for correct exposure, but to optimize image quality.
- Unlike DC-Iris (which reacts only to light changes), P-Iris can actively enhance the image.

### Advantages of P-Iris:

- Minimizes blur caused by diffraction or overly wide apertures.
- Improves image quality in bright daylight, especially in HD or megapixel cameras.
- Maintains a consistent depth of field, useful for scenes with varying distances.

Feature	DC-Iris (Auto Iris)	P-Iris (Precision Iris)
Control type	Analog, voltage-controlled	Digital, stepper motor-controlled
Image sharpness	Varies with light	Consistently optimized
Depth of field	Not optimized	Optimized automatically
Image stability	Can degrade in bright light	Remains high in all light levels

## P-IRIS FUNCTION OF THE CAMERA MODELS



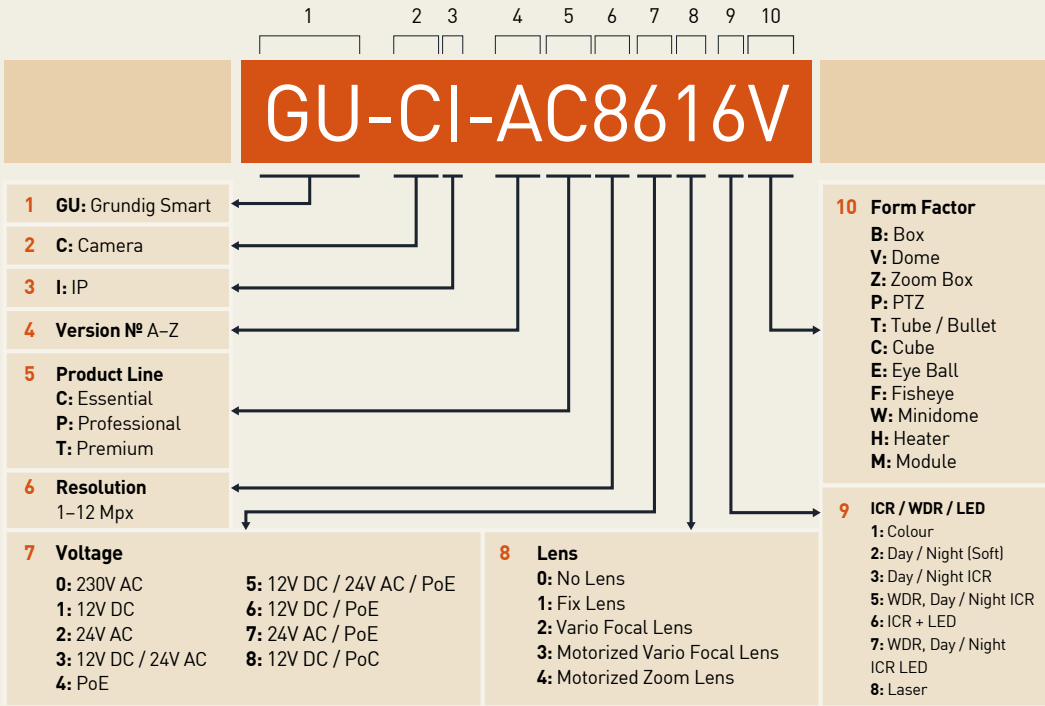
### GU-CI-AP8634T \*

### GU-CI-BP8634T \*\*

- 8 Megapixel
- \* 2.8 ~ 12mm motorized, autofocus
- \*\* 8 ~ 32mm motorized, autofocus
- P-Iris
- 1/1.8" Sensor
- Ultra low light
- Sensitivity (colour): 0.0005 Lux
- Built in speaker & microphone
- IK10
- Smart Dual Light Technology with IR (up to 50m) and white light LEDs



# Structure and composition of the GRUNDIG Security article numbers



## 5 years Extended Guarantee

GRUNDIG Security offers a 5-year guarantee on all „SMART“, „PRO“ and „PREMIUM“ series' cameras. Our goal: to further support our customers by making project maintenance easier and more cost-effective. The 5-year guarantee applies to all electronic components of the products mentioned above. Mechanical wear and tear on moving parts is not included. Please refer to our general terms and conditions.



## OUR AMBITION: THE PURSUIT OF A MORE SUSTAINABLE FUTURE

A holistic approach to sustainability and respect for all natural resources belong to our top priorities and are therefore an essential part of our DNA. This is also reflected in our products: they work as sustainably as possible while meeting the highest standards as regard to quality and aesthetics. During production, we consider the environment as much as possible, and we are always looking for ways to incorporate the idea of sustainability into our products.



## Environmentally friendly packaging

Our environmentally friendly packaging with less colour print is made from 100% recyclable material. To save resources, our detailed operating instructions are available online for download. The quick reference guides that come with the devices are printed on 100% recycled paper. In addition, our mostly fanless devices are distinguished by their low power consumption, which reduces the cost of electricity consumption.

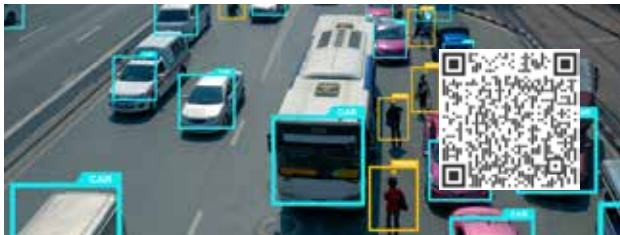
Identify licence plates



Manage queues



Classify persons & vehicles



Detect unusual noises: Dog Barking



Analyse crowds



Identify faces



Detect unusual noises: Baby Crying



Count people/objects



Enter area



Detect unusual noises: Gunshot



Use Heat Map



**[www.grundig-security.com](http://www.grundig-security.com)**

Abetechs GmbH (Grundig Security)  
[info@grundig-security.com](mailto:info@grundig-security.com)