

# Product Overview 2024

## *Video Security*

SMART Product Line

**GRUNDIG**



# What can you expect from the new SMART product line from GRUNDIG Security?

Leaving our tried and tested reliability aside, you will also find a whole lot of image analysis functions, supported by artificial intelligence (AI). And there's a lot of functionality available. You can use facial recognition, for instance, to recognise people, or the LPR function to identify vehicle licence plates. Or you can quite simply reduce the frequency of false alarms signalling a spurious break-in or perimeter breach, by classifying objects as 'vehicle', 'person' or 'other'.

The SMART cameras from GRUNDIG Security can recognise faces in crowds of people, count heads and determine the length of queues at your supermarket till, therefore helping you to make the best possible use of your resources. They'll let you know when unauthorised people cross pre-defined lines or enter certain areas, and they'll trigger an alarm when objects are left at your doorstep.

These are just a few examples out of a plethora of possibilities which the exceptionally flexible SMART line products from GRUNDIG Security are able to offer.

So, if you want more than just pretty pictures and long recording times, please get in touch.

We look forward to hearing from you!

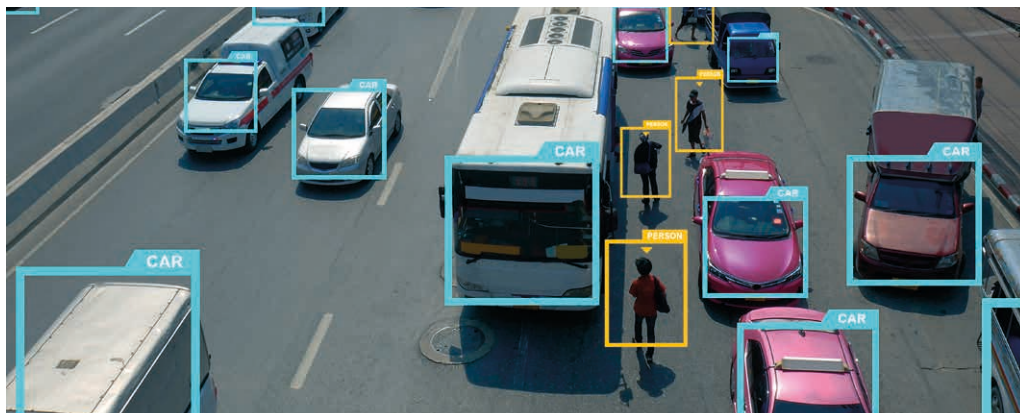




## Content

|   |    |
|---|----|
| Image analysis function .....                     | 3  |
| <b>IP Cameras</b>                                 |    |
| Eyeball   Fix Dome .....                          | 6  |
| Bullet .....                                      | 7  |
| Fisheye   Speed Dome .....                        | 8  |
| <b>Mobile App</b> .....                           | 9  |
| <b>Recorders</b> .....                            | 10 |
| <b>Monitors</b> .....                             | 12 |
| <b>Switches</b> .....                             | 13 |
| <b>Accessories</b> .....                          | 14 |
| <b>Technology: SMART Image Sensor</b> .....       | 16 |
| <b>Software, Tools, Apps, Storage Media</b> ..... | 17 |
| <b>General Information</b> .....                  | 18 |
| <b>Links to Demo Videos</b> .....                 | 19 |

## Classify persons & vehicles



The GRUNDIG Security Smart Line cameras allow for clear classification of people and vehicles. This enables users, e.g. control centre operators, to define alarm events and responses even more precisely. The bidirectional audio function also allows direct communication with people on site.

## Identify licence plates



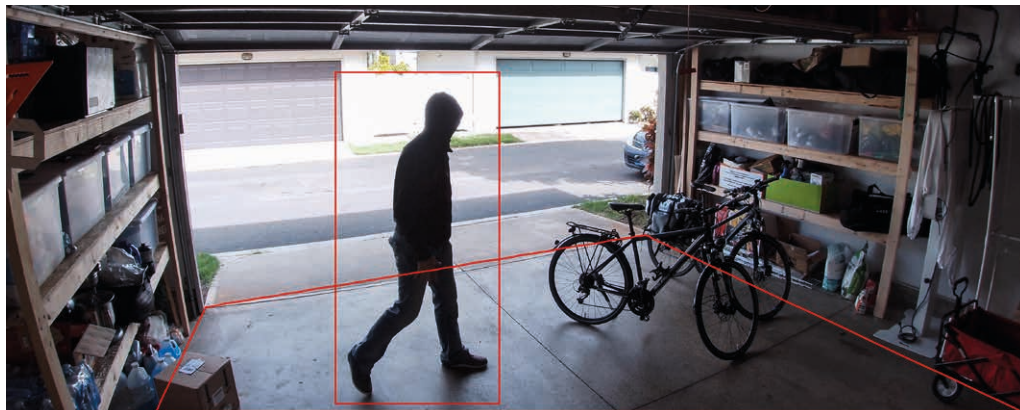
The licence plate recognition function enables reliable and automated access control, for example on a company's premises. The legitimisation of the respective vehicle is regulated via black and white lists.

## Identify faces



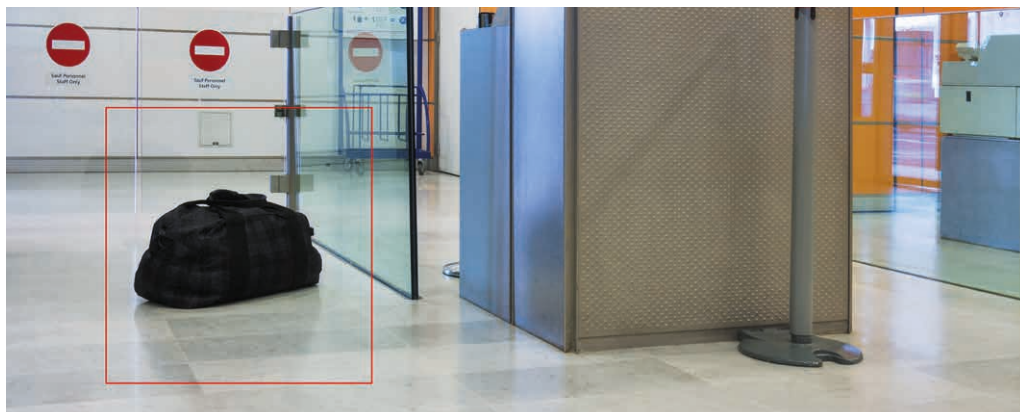
As soon as a face is recognised, alarm information, including attributes such as gender and age, is reported. The data is compared with the database: If the face is not stored in the database, it is recognised as "unknown". Wearing a face mask can also be defined as a recognition attribute.

## Enter area



The “enter area” detection function allows the precise definition of areas. As soon as someone enters the defined area, an alarm message is triggered. The moving object is classified as a person, motorised or non-motorised vehicle. Four different customisable rules are available for the alarm response.

## Detect left/removed objects



The “left/removed objects” detection function offers two usage options: objects located in a predefined area can be quickly identified. The function can also be used to detect the removal of any objects in this area.

## Manage queues



An alarm will be triggered as soon as a queue reaches a certain length. Alternatively, this function can be used to trigger an event by exceeding a certain dwell time.

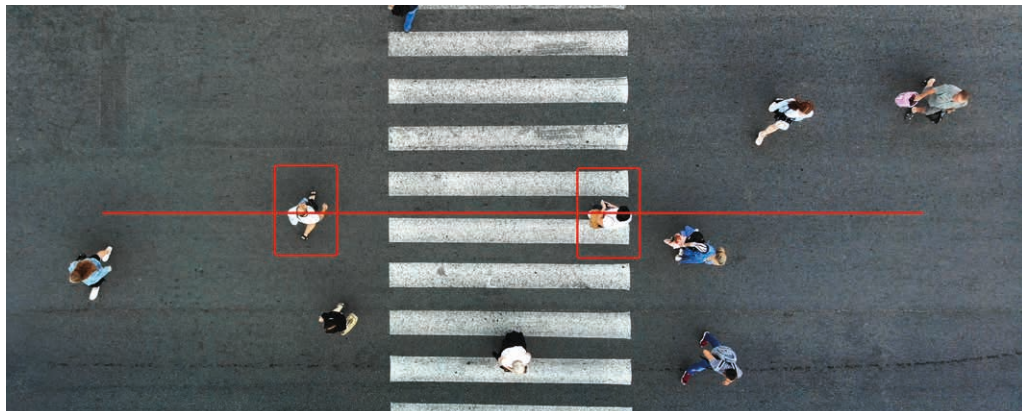
## Use Heat Map



The heat map function facilitates the identification of areas where people prefer to stay or which are less frequented.



## Cross lines



If "Line crossing" is activated, crossing a previously defined line triggers an alarm message. The corresponding object is classified as a person, motorised or non-motorised vehicle. Four different customisable rules are available for the alarm response.

## Analyse crowds



An alarm is triggered as soon as the set number of people in a predefined area is exceeded. An acoustic message can also be emitted.

## Count people/objects



The "people/object counting" analysis function reliably counts people, moving objects as well as motorised or non-motorised vehicles, also in two different directions. By means of powerful reports, the collected data can be evaluated for further use.

## Detect unusual noises



This audio analysis function detects unusual noises such as barking dogs, baby crying and gunshots, thereby triggering an alarm. The sensitivity of this function can be adjusted infinitely.

**GU-CI-AC5617E****GU-CI-AC5637E****GU-CI-AC8616E****GU-CI-AC5617V****GU-CI-AC5637V****GU-CI-AC8616V****GU-CI-AP4634V****Smart****Smart****Smart****Smart****Smart****Smart****Smart**

|                                 |  |                                  |                                    |  |                                  |                                    |  |
|---------------------------------|--|----------------------------------|------------------------------------|--|----------------------------------|------------------------------------|--|
| Video Resolution                | 2880 x 1620  | 2880 x 1620                      | 3840 × 2160                        | 2880 x 1620  | 2880 x 1620                      | 3840 × 2160                        | 2560 x 1440  |
| Sensitivity Colour              | 0.004 Lux @ F1.6 (AGC ON)  | 0.004 Lux @ F1.6 (AGC ON)        | 0.009 Lux @ F1.6 (AGC ON)          | 0.004 Lux @ F1.6 (AGC ON)                            | 0.004 Lux @ F1.6 (AGC ON)        | 0.009 Lux @ F1.6 (AGC ON)          | 0.001 Lux @ F1.6 (AGC ON)                            |
| Lens Focal Length               | 2.8 mm   | 2.8 ~ 12 mm motorized, autofocus | 2.8 mm                             | 2.8 mm   | 2.8 ~ 12 mm motorized, autofocus | 2.8 mm                             | 2,8 ~ 12 mm, motorized, autofocus                    |
| Col/B&W                         | Auto, IR-cut filter removable (ICR)  |                                  |                                    |  |                                  |                                    |  |
| Wide Dynamic Range              | 120 dB   |                                  | 72 db (Digital Wide Dynamic Range) | 120 dB   |                                  | 72 db (Digital Wide Dynamic Range) | 120 dB   |
| Image Enhancement               | BLC, 3D DNR, HLC   |                                  |                                    |  |                                  |                                    | BLC, 3D DNR, HLC, Defog                              |
| Max. IR Distance                | Up to 30 m   | Up to 45 m                       | Up to 30 m                         | Up to 20 m   | Up to 30 m                       | Up to 20 m                         | Up to 20 m   |
| Video Compression               | H.264, H.264+, H.265, H.265+ , MJPEG   |                                  |                                    |  |                                  |                                    |  |
| SD Memory                       | Built-in Micro SD, SDHC, SDXC slot from 32 up to 256 GB  |                                  |                                    |  |                                  |                                    |  |
| Audio Input/Output              | Built-in microphone  | 1-ch input and 1-ch output       | Built-in microphone                | Built-in microphone                                  | 1-ch input and 1-ch output       | Built-in microphone                | 1-ch input and 1-ch output                           |
| Audio Detection                 | Detects unusual noises: dogs barking, babies crying, gunshots, sudden sound increase and decrease  |                                  |                                    |  |                                  |                                    |  |
| License plate Recognition       | If SD-card is applied or Smart recorder is connected   |                                  | -                                  | If SD-card is applied or Smart recorder is connected |                                  | -                                  | If SD-card is applied or Smart recorder is connected |
| Intelligent Analytics Functions | Detection of Motion, People & Vehicle, Intrusion, Line Crossing, Object Removal, Object Counting, Faces, Queue Length and/or Crowd Density Detection as well as Heat Map |                                  |                                    |  |                                  |                                    |  |
| Operating Temperature           | -35 °C ~ 60 °C (-31 °F ~ 140 °F)   |                                  |                                    |  |                                  |                                    | -30 °C ~ 60 °C (-22 °F ~ 140 °F)                     |
| Supply Voltage                  | 12 VDC, PoE (802.3af)  |                                  |                                    |  |                                  |                                    |  |
| Power Consumption               | Max. 5.5 W   | Max. 9.5 W                       | Max. 5.5 W                         |  | Max. 7 W                         | Max. 5.5 W                         | Max. 13 W  |



**GU-CI-AC5617T****GU-CI-AC5637T****GU-CI-AC8616T****GU-CI-AP4634T****GU-CI-AP5634T**

|                                 | Smart  | Smart                            | Smart                              | Smart                            | Smart                              |
|---------------------------------|--|----------------------------------|------------------------------------|----------------------------------|------------------------------------|
| Video Resolution                | 2880 x 1620  | 2880 x 1620                      | 3840 × 2160                        | 2560 x 1440                      | 2880 x 1620                        |
| Sensitivity Colour              | 0.004 Lux @ F1.6 (AGC ON)  | 0.004 Lux @ F1.6 (AGC ON)        | 0.009 Lux @ F1.6 (AGC ON)          | 0.0005 Lux                       | 0.004 Lux @ F1.6 (AGC ON)          |
| Lens Focal Length               | 3.6 mm   | 2.8 ~ 12 mm motorized, autofocus | 3.6 mm                             | 2.8 ~ 12 mm motorized, autofocus | 5 ~ 50 mm motorized varifocal lens |
| Col/B&W                         | Auto, IR-cut filter removable (ICR)  |                                  |                                    |                                  |                                    |
| Wide Dynamic Range              | 120 dB   | 120 dB                           | 72 db (Digital Wide Dynamic Range) | 120 dB                           | 120 dB                             |
| Image Enhancement               | BLC, 3D DNR, HLC   |                                  |                                    |                                  |                                    |
| Max. IR Distance                | Up to 30 m   | Up to 45 m                       | Up to 30 m                         | Up to 50 m                       | Up to 80 m                         |
| Video Compression               | H.264, H.264+, H.265, H.265+ , MJPEG   |                                  |                                    |                                  |                                    |
| SD Memory                       | Built-in Micro SD, SDHC, SDXC slot from 32 up to 256 GB  |                                  |                                    |                                  |                                    |
| Audio Input/Output              | Built-in microphone  | 1-ch input and 1-ch output       | Built-in microphone                | 1-ch input and 1-ch output       |                                    |
| Audio Detection                 | Detects unusual noises: dogs barking, babies crying, gunshots, sudden sound increase and decrease  |                                  |                                    |                                  |                                    |
| License plate Recognition       | If SD-card is applied or Smart recorder is connected   |                                  |                                    |                                  |                                    |
| Intelligent Analytics Functions | Detection of Motion, People & Vehicle, Intrusion, Line Crossing, Object Removal, Object Counting, Faces, Queue Length and/or Crowd Density Detection as well as Heat Map |                                  |                                    |                                  |                                    |
| Operating Temperature           | -35 °C ~ 60 °C (-31 °F ~ 140 °F)   |                                  |                                    |                                  |                                    |
| Supply Voltage                  | 12 VDC, PoE (802.3af)  |                                  |                                    |                                  |                                    |
| Power Consumption               | Max. 5.5 W   | Max. 9.5 W                       | Max. 5.5 W                         | Max. 9.5 W                       |                                    |







GU-CI-AP12616F



GU-CI-AP5647P

|                                 | Smart   | Smart   |
|---------------------------------|---|---|
| Video Resolution                | 4000 × 3000   | 2592 x 1944   |
| Sensitivity Colour              | 0.01 Lux  | 0.003 Lux @ F1.6 (AGC ON)   |
| Lens Focal Length               | 1.6 mm  | 4.3 ~ 142 mm motorized, autofocus   |
| Col/B&W                         | Auto, Color, Removable IR-Cut Filter (ICR)              |   |
| Wide Dynamic Range              | Digital WDR   | 120 dB  |
| Image Enhancement               | BLC, 3D DNR, HLC  |   |
| Max. IR Distance                | Up to 10 m  | Up to 150 m   |
| Video Compression               | H.264, H.264+, H.265, H.265+ , MJPEG                    |   |
| SD Memory                       | Built-in Micro SD, SDHC, SDXC slot from 32 up to 256 GB |   |
| Audio Input/Output              | Built-in microphone & built-in speaker                  | 1-ch input and 1-ch output  |
| Audio Detection                 | Sudden sound increase and decrease                      | Detects unusual noises: dogs barking, babies crying, gunshots, sudden sound increase and decrease   |
| License plate Recognition       | If SD-card is applied or Smart recorder is connected    |   |
| Intelligent Analytics Functions | Motion detection  | Detection of Motion, People & Vehicle, Intrusion, Line Crossing, Object Removal, Object Counting, Faces , Queue Length and/or Crowd Density Detection as well as Heat Map |
| Operating Temperature           | -35 °C ~ 60 °C (-31 °F ~ 140 °F)                        |   |
| Supply Voltage                  | 12 VDC, PoE (IEEE 802.3af)                              | 12 VDC, PoE (IEEE 802.3at)  |
| Power Consumption               | Max. 9.5 W  | Max. 25 W   |

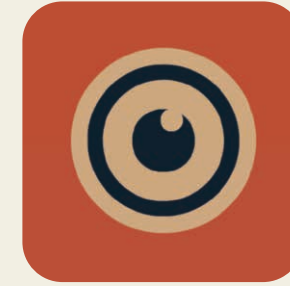
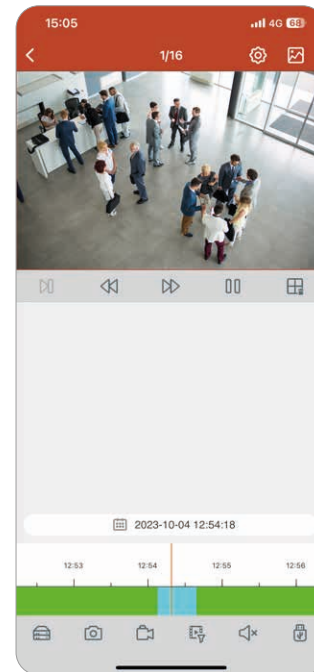
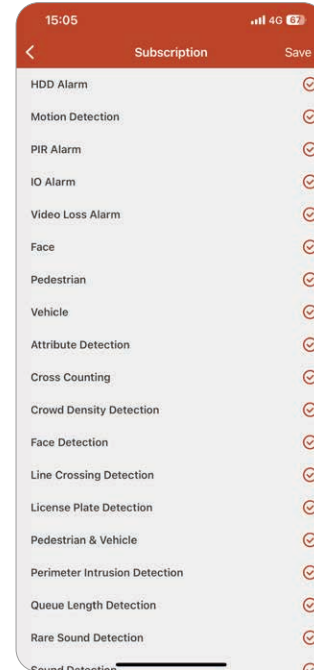
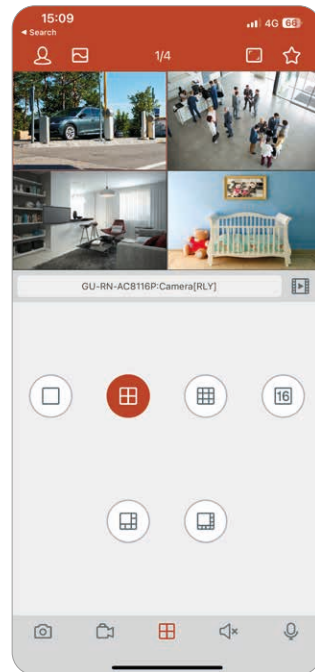
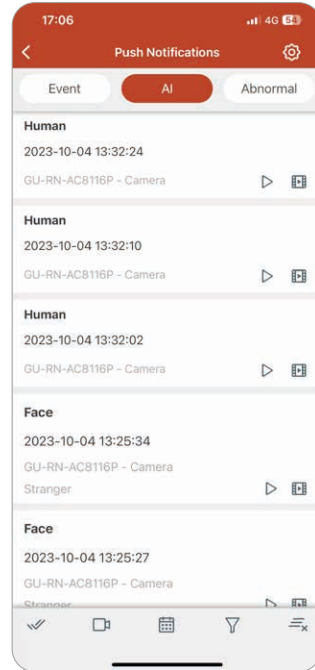


# THE SMART LINE FROM GRUNDIG SECURITY: NDAA COMPLIANT

NDAA is the abbreviation for the National Defense Authorization Act. The John S. McCain National Defense Authorization Act (NDAA) for Fiscal Year 2019 was signed into law on August 13, 2018 and effective from August 2020. The law, specifically Section 889, prohibits federal agencies, their contractors and grant or loan recipients from procuring or using “telecommunications and video surveillance equipment or services” from specific Chinese companies as a “substantial or essential component of any system, or as critical technology as part of any system.” The SMART product line from GRUNDIG Security complies with the requirements of this law.







## THE GSVM APP BY GRUNDIG SECURITY: INSTALLED AND CONFIGURED IN NO TIME

The GSVM app is a surveillance application for mobile phones and tablets.

The Mobile Software App has been designed to help small businesses effectively operate and manage security devices from anywhere and at anytime.

The power to view live images, play back footage, and receive notifications remotely keeps owners and operators in touch with their business, even when away.

- Real-time video preview of up to 16 channels
- Live control of PTZ Cameras
- Remote configuration of connected devices
- Display the cause of alarm triggering
- Push alarm notification
- Snapshot function
- Integration of devices via P2P cloud and IP-address



GU-RN-AC8104P



GU-RN-AC8108P



GU-RN-AC8116P



GU-RN-AP8216N

|                       | Smart   | Smart  | Smart   | Smart   |
|-----------------------|---|--|---|---|
| IP Inputs             | 4 channels  | 8 channels   | 16 channels   | 16 channels   |
| Recording Bandwidth   | max. 50 Mbps  | 128 Mbps   | 112 Mbps  | 256Mbps   |
| Outgoing Bandwidth    | max. 64 Mbps  | 128 Mbps   | 96 Mbps   | 128 Mbps  |
| Recording Resolution  | 8 MP, 5 MP, 3 MP, 1080p, 960p, 720p   | 12 MP, 8 MP, 5 MP, 3 MP, 1080p, 960p, 720p         |   |   |
| Video Compression     | H.264, H.264+, H.265, H.265+ , MJPEG  |  |   |   |
| Recording Mode        | Continuous, Event Alarm, Motion, Schedule   |  |   |   |
| Search Mode           | Date, Time, Event Alarm, Motion, Search Backup  |  |   |   |
| Smart Search Function | Search for people, motorized vehicles, non-motorized vehicles, intrusion and line crossing, thumbnails, tags, faces and characteristics, attendance, visit frequency and license plates |  |   |   |
| External Backup       | USB HDD, USB Memory, Network  |  |   | USB HDD, USB Memory, DVD-R, Network   |
| HDMI Output           | 4K (3840 × 2160), 2K (2560 × 1440), 1920 × 1080, 1600 × 1200, 1900 × 1200, 1440 × 900, 1280 × 1024, 1280 × 720, 1024 × 768  |  |   | HDMI1: 3840 x 2160 (EDID/4K),2560 x 1440, 1920 × 1080, 1440 x 900, 1280 x 1024, 1280 x 720, 1024 x 768<br>HDMI2: 1920 × 1080, 1440 x 900, 1280 × 1024, 1280 × 720, 1024 × 768 |
| Harddisk bay          | 1 x SATA III, 1 x eSATA   |  | 2 x SATA III, 1 x eSATA                             |   |
| Max. Storage Capacity | Up to 10TB capacity for each HDD  |  |   |   |
| Audio Input/Output    | 1-ch input and 1-ch output  |  |   |   |
| Alarm Input/Output    | 4/1   | 8/1  | 8/1   | 16/1  |
| Power over Ethernet   | 4 independent 10, 100 Mbps PoE Ethernet interfaces  | 8 independent 10, 100 Mbps PoE Ethernet interfaces | 16 independent 10, 100 Mbps PoE Ethernet interfaces | —   |
| Supply Voltage        | 48 VDC, Power Adapter 100 ~ 240 VAC 50, 60Hz included   |  |   | 12 VDC ±10%   |
| Power Consumption     | ≤ 5 W without harddisk  | ≤ 6 W without harddisk                             | ≤ 8 W without harddisk                              | ≤ 18 W without harddisk   |



**GU-RN-AP8232N****GU-RN-AP8864N****GU-RN-AT816256N**

|                       | Smart   | Smart   | Smart  |
|-----------------------|---|---|--|
| IP Inputs             | 32 channels   | 64 channels   | 256 channels                                     |
| Recording Bandwidth   | 256 Mbps  | 640 Mbit/s  | 1024 Mbps  |
| Outgoing Bandwidth    | 128 Mbps  | 640 Mbit/s  | 800 Mbps   |
| Recording Resolution  | 12 MP, 8 MP, 5 MP, 3 MP, 1080p, 960p, 720p  |   |  |
| Video Compression     | H.264, H.264+, H.265, H.265+ , MJPEG  |   |  |
| Recording Mode        | Continuous, Event Alarm, Motion, Video Loss, Schedule   |   |  |
| Search Mode           | Date, Time, Event Alarm, Motion, Search Backup  |   |  |
| Smart Search Function | Search for people, motorized vehicles, non-motorized vehicles, intrusion and line crossing, thumbnails, tags, faces and characteristics, attendance, visit frequency and license plates |   |  |
| External Backup       | USB HDD, USB Memory, Network  |   |  |
| HDMI Output           | HDMI1: 3840 x 2160 (EDID/4K), 2560 x 1440, 1920 × 1080, 1440 x 900, 1280 x 1024, 1280 x 720, 1024 x 768<br><br>HDMI2: 1920 × 1080, 1440 x 900, 1280 × 1024, 1280 × 720, 1024 × 768      | HDMI1, 2 & 3: 3840 x 2160 (EDID/4K), 2560 x 1440, 1920 × 1080, 1440 x 900, 1280 x 1024, 1280 x 720, 1024 x 768<br>HDMI4: 1920 × 1080, 1440 x 900, 1280 × 1024, 1280 × 720, 1024 × 768 |  |
| Harddisk bay          | 4 x SATA III, 1 x eSATA   | 8 x SATA III, 1 x eSATA   | 16 x SATA III, 1 x e-SATA                        |
| Max. Storage Capacity | Up to 10TB capacity for each HDD  | Up to 12 TB capacity for each HDD   | Up to 16 TB capacity for each HDD, hot swappable |
| Audio Input/Output    | 1-ch input and 1-ch output  |   |  |
| Alarm Input/Output    | 16/1  | 16/4  |  |
| Power over Ethernet   | —   |   |  |
| Supply Voltage        | 12 VDC, Power Adapter 100 ~ 240 VAC 50, 60Hz included   |   | 100 ~ 240 VAC, 50Hz / 60Hz                       |
| Power Consumption     | ≤ 12 W without harddisk   | ≤ 8 W without harddisk  |  |



|                         | GD-ML-DP2230HD  | GD-ML-DP2430HD                                | GD-ML-DP2730HD                              |
|-------------------------|---|---|---|
|                         | Professional  | Professional                                  | Professional                                |
| LCD Panel size          | 54.6 cm (21, 5”) Diagonal AM-TFT LED Backlight        | 59.9 cm (23.6”) Diagonal AM-TFT LED Backlight | 68.5 cm (27”) Diagonal AM-TFT LED Backlight |
| Pixels Total            | 1920 (H) x 1080 (V)                                   |   |   |
| Pixel Pitch             | 0.248 mm (H) x 0.248 mm (V)                           |   |   |
| Aspect Ratio            | 16 : 9  |   |   |
| Video Standard          | PAL, NTSC   |   |   |
| Video Inputs            | 1x HDMI, 1x VGA, 1x USB                               |   |   |
| Brightness              | 300 cd, m²  |   |   |
| Contrast Ratio          | 1000:1  |   |   |
| Number of Colours       | 16.7 million  |   |   |
| Viewing Angle           | 170° (H) ~ 160° (V)                                   |   |   |
| Response Time           | 5 ms  |   |   |
| Audio Inputs            | 1-ch, RCA (2.0 Vp-p, 1kΩ)                             |   |   |
| Speakers                | 2 x 2 W   |   |   |
| Vesa Mount              | 75 x 75 mm  | 100 x 100 mm                                  | 75 x 75 mm                                  |
| OSD (On Screen Display) | Yes, multi language                                   |   |   |
| Accessories included    | Power Adapter and HDMI cable                          |   |   |
| Regulation              | CE, EAC, FCC, RoHS Compliant                          |   |   |
| Power Consumption       | Max. 21 W   | Max. 24 W                                     |   |
| Supply Voltage          | 12 VDC, Power Adapter 100 ~ 240 VAC 50, 60Hz included |   |   |



THE MONITOR SERIES FROM GRUNDIG  
SECURITY: SCREENS WITH TRADITION!

Our latest monitor series impresses with its elegant design and ultra-thin screen edges.

At the same time, it meets the requirements of modern video systems. The devices are equipped with extra robust components to ensure reliable use 24 hours a day, 7 days a week, 365 days a year.

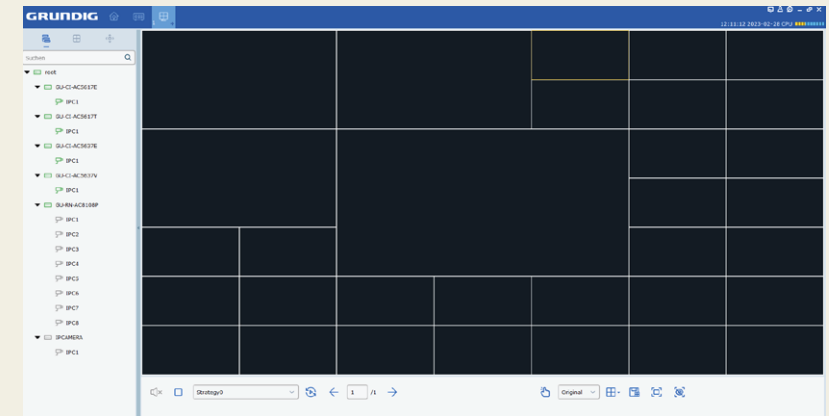
In addition, the panels have been specially selected for video surveillance applications and use technologies to prevent ghosting and offer high brightness and contrast values.





|                            | GU-HW-ACSW04D  | GU-HW-ACSW08D                              | GU-HW-ACSW16R                                |
|----------------------------|--|--|--|
|                            | Smart  | Smart                                      | Smart  |
| Interfaces (Ports)         | 4x 10/100M PoE + 1x 10/100M                          | 8x 10/100M PoE + 1x 100/1000M              | 16x 10/100M PoE + 2x 100/1000M               |
| PoE Specification          | 802.3af/at (PSE)                                     |  |  |
| Switch Throughput          | 1 Gbps   | 3.6 Gbps                                   | 7.2 Gbps                                     |
| ISO Standard               | 802.3802.3x802.3u802.3az                             |  |  |
| PoE Budget                 | 52 W   | 65 W                                       | 225 W  |
| Max. Power Output per Port | 30 W max. (Individual Port)                          |  |  |
| Bit Rate                   | Uplink/Downlink Rate 100 Mbps                        | Uplink/Downlink Rate 1000 Mbps             |  |
| Internal Cache             | 1 Mbit/s   | 4,1 Mbit/s                                 | 2,75 Mbit/s                                  |
| Packet Forwarding Rate     | 0.7 Mpps   | 2.6 Mpps                                   | 5.36 Mpps                                    |
| Material                   | Metal  |  |  |
| Operating Temperature      | 0 °C ~ +40 °C  |  |  |
| Supply Voltage             | 48 VDC, 100~240 VAC, 50/60 Hz Power Adapter included |  | 100~240 VAC, 50/60 Hz                        |
| Power Consumption          | Max. 58 W  | Max. 72 W                                  | Max. 400 W                                   |
| Dimensions (W x H x D)     | 110 x 82 x 30 mm<br>(4.3 x 3.2 x 1.2 inch)           | 173 x 82 x 30 mm<br>(6.8 x 3.2 x 1.2 inch) | 440 x 221 x 44 mm<br>(17.3 x 8.7 x 1.7 inch) |
| Weight                     | 222 g (0,49 lb)                                      | 380 g (0,84 lb)                            | 2900 g (6,39 lb)                             |

## CONFIGURATION AND MANAGEMENT THROUGH GU-SW-VMS



The configuration and management of the Smart-Managed PoE switches can be conveniently handled through the free software GU-SW-VMS from GRUNDIG Security. The software is also compatible with all other devices of the SMART product line from GRUNDIG Security.

- Integration of SMART line cameras and recorders
- Device management and recording
- Freely configurable views
- Comprehensive AI event search function
- Local recording of signals from all connected devices
- Live image display and playback of recorded images and video sequences
- Remote configuration of connected SMART line devices
- AI database management, e. g. face recognition
- Embedding of images, floor plans, and/or maps



GU-CI-AC5617E  
GU-CI-AC8616E



GU-BR-AJX01  
Junction Box Pendant Mount



GU-BR-AJX02  
Junction Box



GU-BR-AJX03  
Junction Box



GU-BR-AJX04  
Junction Box



GU-BR-AMW04  
Wall Mount Bracket



GU-CI-AC5637E



GU-BR-AJX11  
Junction Box



GU-BR-AMW05  
Wall Mount Bracket



GU-CI-AC5617V  
GU-CI-AC8616V



GU-BR-AJX09  
Junction Box Pendant Mount



GU-BR-AJX10  
Junction Box



GU-BR-AMF02  
Flush Mount Adapter



GU-BR-AMW04  
Wall Mount Bracket



GU-CI-AC5637V



GU-BR-AJX06  
Junction Box



GU-BR-AJX07  
Junction Box Pendant Mount



GU-BR-AJX08  
Dual Junction Box incl. PoE Switch



GU-BR-AMF01  
Flush Mount Adapter



GU-BR-AMW05  
Wall Mount Bracket



GU-BR-ASN01  
Sunshield for Fixed Dome Cameras



GU-CI-AP4634V



GU-BR-AJX02  
Junction Box



GU-BR-AMW05  
Wall Mount Bracket



GU-CI-AC5617T  
GU-CI-AC8616T



GU-BR-AJX01  
Junction Box Pendant Mount



GU-BR-AJX02  
Junction Box



GU-BR-AJX03  
Junction Box



GU-BR-AJX04  
Junction Box



GU-BR-AJX05  
Junction Box Hinged



GU-CI-AC5637T



GU-BR-AJX01  
Junction Box Pendant Mount



GU-BR-AJX02  
Junction Box



GU-BR-AJX03  
Junction Box



GU-BR-AJX04  
Junction Box



GU-BR-AJX05  
Junction Box Hinged



GU-CI-AP5634T  
GU-CI-AP4634T



GU-BR-AML01  
Pole Mount Bracket



GU-BR-AMP01  
Pendant Mount Bracket



GU-CI-AP12616F



GU-BR-AJX13  
Junction Box for Fisheye Camera















GU-BR-AMP02  
Pendant Mount Bracket for Fisheye  
Camera







GU-CI-AP5647P

-  GD-BR-AMA01  
Parapet Wall Mount
-  GD-BR-AMC04  
Corner Mount Bracket Junction Box
-  GD-BR-AML06  
Pole Mount Bracket with Junction Box
-  GD-BR-AMP01  
Pendant Mount Bracket (long)
-  GD-BR-AMP04  
Pendant Mount Bracket (medium long)
-  GD-BR-AMP06  
Pendant Mount Bracket (short)
-  GD-BR-AMP07  
Pendant Mount Bracket extendable
-  GD-BR-AMS01  
Swan Neck Mount
-  GD-BR-AMW08  
Wall Mount Bracket
-  GD-BR-AMW10  
Wall Mount Bracket
-  GD-BR-AWJ03  
Wall Mount Bracket with Junction Box
-  GD-BR-AWJ04  
Wall Mount Bracket with Junction Box




GU-BR-AJX01

-  GU-BR-AMP01  
Pendant Mount Bracket
-  GU-BR-AMW01  
Wall Mount Bracket





GU-BR-AJX03

-  GU-BR-AML01  
Pole Mount Bracket





GU-BR-AJX06

-  GU-BR-AMP01  
Pendant Mount Bracket
-  GU-BR-AMW01  
Wall Mount Bracket





GU-BR-AJX07

-  GU-BR-AMP01  
Pendant Mount Bracket
-  GU-BR-AMW01  
Wall Mount Bracket





GU-BR-AJX08

-  GD-BR-AMW08  
Wall Mount Bracket for PTZ Domes
-  GU-BR-AJX08A  
Adapter Junction Box




GU-BR-AJX09

-  GU-BR-AMP01  
Pendant Mount Bracket
-  GU-BR-AMW01  
Wall Mount Bracket





GU-BR-AJX11

-  GU-BR-AML01  
Pole Mount Bracket





GU-BR-AJX12

-  GU-BR-AMP01  
Pendant Mount Bracket
-  GU-BR-AMW01  
Wall Mount Bracket





GU-BR-AJX13

-  GU-BR-AMP01  
Pendant Mount Bracket
-  GU-BR-AMW01  
Wall Mount Bracket




GU-BR-AMW01

-  GU-BR-AMC01  
Corner Mount Bracket

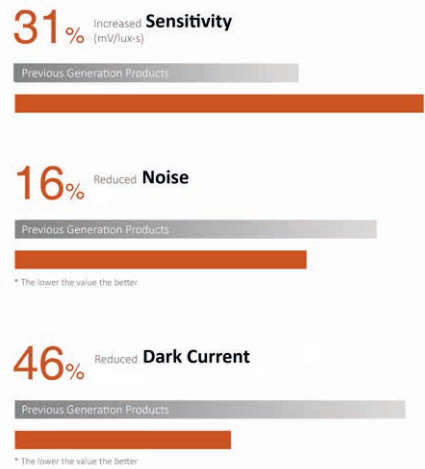
-  GU-BR-AML01  
Pole Mount Bracket



GU-BR-AMW02

-  GU-BR-AML01  
Pole Mount Bracket

SC500AI WIDESCREEN SMART IMAGE SENSOR FOR 5 MEGAPIXEL CAMERAS



With the innovative SC500AI Widescreen Smart Image Sensor for all 5 megapixel cameras in our NDAA-compliant SMART product line, GRUNDIG Security enhances the visual experience on modern LCD displays, bridging the gap between image output and natural human vision.

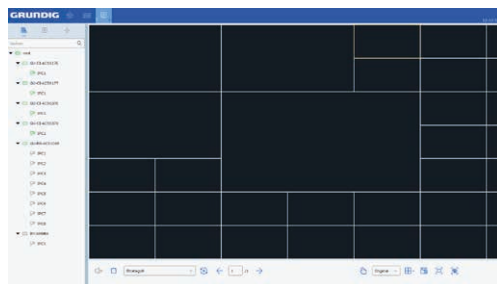
Thanks to SmartClarity Technology, the SC500AI sensor increases the number of pixels by 20% compared to many 5MP products on the market. Instead of cropping a 5MP 4:3 image down to 4 megapixels, the full resolution of the sensor is utilized to achieve a true 16:9 aspect ratio with 1620P.

This effectively reduces dark edges and distortion on both sides of the image caused by uneven scaling while achieving a true 16:9 aspect ratio with an additional 10% horizontal viewing area.

The SC500AI sensor boasts improved sensitivity and reduced noise, even under high-temperature conditions, thanks to the unique SFCPixel® technology.

The PixGain® technology also enables excellent High Dynamic Range (HDR) performance, even under glaring sunlight.

## SMART PRODUCT LINE: SOFTWARE, APPS & TOOLS



### GU-SW-VMS

SMART Line PC Software

| No. | IP           | Media Port | Web Port | Channel | Device Name   | Device Type   | Device Version | Firmware |
|-----|--------------|------------|----------|---------|---------------|---------------|----------------|----------|
| 1   | 192.168.0.10 | 8000       | 80       | 1       | GU-SW-ACR100P | GU-SW-ACR100P | 1.0.0.0        | 1.0.0.0  |
| 2   | 192.168.0.11 | 8000       | 80       | 1       | GU-SW-ACR100P | GU-SW-ACR100P | 1.0.0.0        | 1.0.0.0  |
| 3   | 192.168.0.12 | 8000       | 80       | 1       | GU-SW-ACR100P | GU-SW-ACR100P | 1.0.0.0        | 1.0.0.0  |
| 4   | 192.168.0.13 | 8000       | 80       | 1       | GU-SW-ACR100P | GU-SW-ACR100P | 1.0.0.0        | 1.0.0.0  |
| 5   | 192.168.0.14 | 8000       | 80       | 1       | GU-SW-ACR100P | GU-SW-ACR100P | 1.0.0.0        | 1.0.0.0  |
| 6   | 192.168.0.15 | 8000       | 80       | 1       | GU-SW-ACR100P | GU-SW-ACR100P | 1.0.0.0        | 1.0.0.0  |

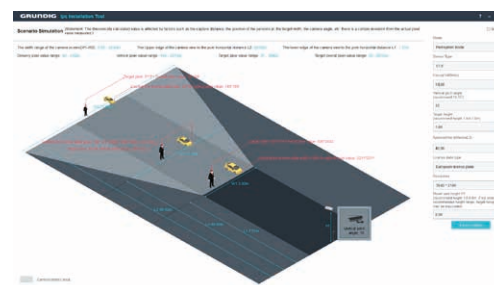
### GU-SW-IP-FINDER

SMART Line Tool for device connection, configuration and management



### GU-SW-PLAYER

SMART Line Video Player



### GU-SW-INST-TOOL

SMART Line Tool for camera setup

## DID YOU KNOW?

For real-time video preview and remote parameterization of the connected cameras and recorders, there is also a mobile GSVM app available for iOS and Android, in addition to the desktop application, naturally also available for free. For more details, see page 9.

GSVM APP  
IOS



GSVM APP  
ANDROID



## STORAGE MEDIA

### HARDDISKS



GD-HW-HDD-2TB

Server HDD 2TB Western Digital Purple

GD-HW-HDD-4TB

Server HDD 4TB Western Digital Purple

GD-HW-HDD-6TB

Server HDD 6TB Western Digital Purple

GD-HW-HDD-8TB

Server HDD 8TB Western Digital Purple

GD-HW-HDD-10TB

Server HDD 10TB Western Digital Purple

Other harddisk capacities upon request!

### SD CARDS



GD-HW-SD-128GB

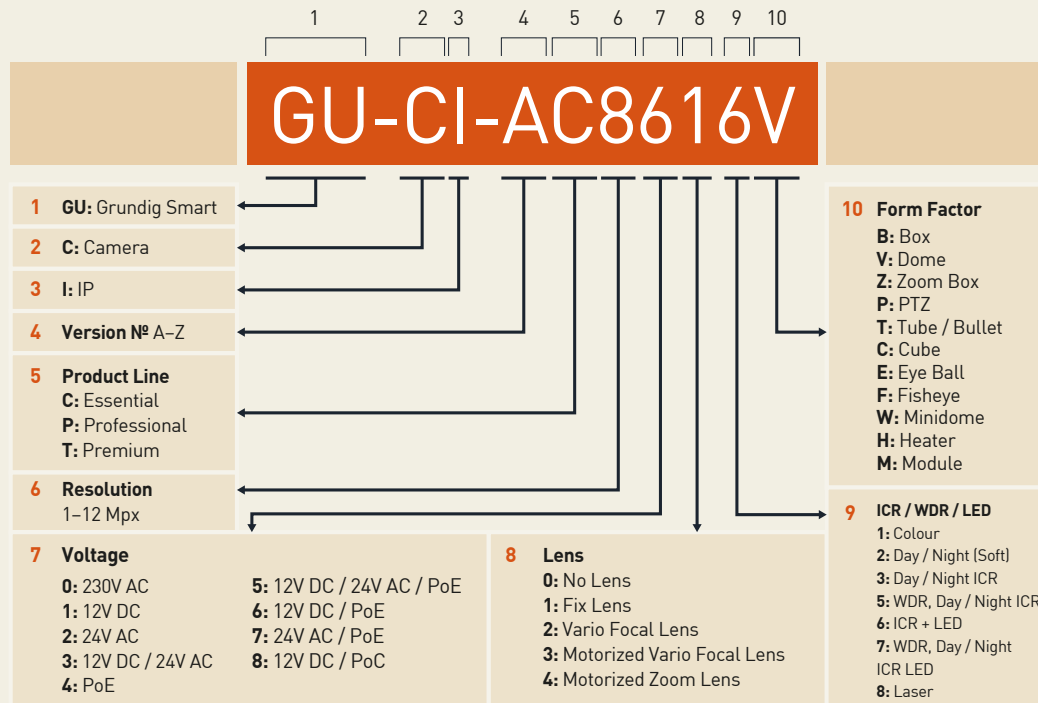
Micro SD card 128GB Western Digital Purple

GD-HW-SD-256GB

Micro SD card 256GB Western Digital Purple



## Structure and composition of the GRUNDIG Security article numbers



## 5 years Extended Guarantee

GRUNDIG Security offers a 5-year guarantee on all „SMART“, „PRO“ and „PREMIUM“ series' cameras. Our goal: to further support our customers by making project maintenance easier and more cost-effective. The 5-year guarantee applies to all electronic components of the products mentioned above. Mechanical wear and tear on moving parts is not included. Please refer to our general terms and conditions.



## OUR AMBITION: THE PURSUIT OF A MORE SUSTAINABLE FUTURE

A holistic approach to sustainability and respect for all natural resources belong to our top priorities and are therefore an essential part of our DNA. This is also reflected in our products: they work as sustainably as possible while meeting the highest standards as regard to quality and aesthetics. During production, we consider the environment as much as possible, and we are always looking for ways to incorporate the idea of sustainability into our products.



## Environmentally friendly packaging

Our environmentally friendly packaging with less colour print is made from 100% recyclable material. To save resources, our detailed operating instructions are available online for download. The quick reference guides that come with the devices are printed on 100% recycled paper. In addition, our mostly fanless devices are distinguished by their low power consumption, which reduces the cost of electricity consumption.

Identify licence plates

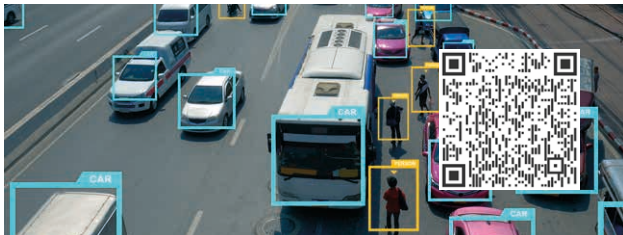


Scan the QR-code  
and see the AI functions  
of the smart product line  
in action!

Manage queues



Classify persons & vehicles



Detect unusual noises: Dog Barking



Analyse crowds



Identify faces



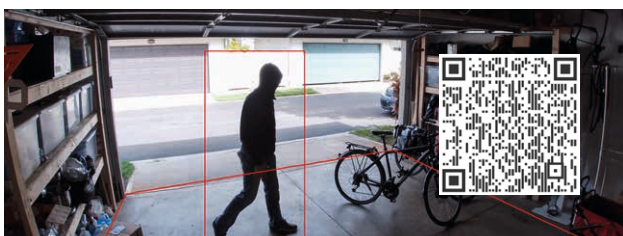
Detect unusual noises: Baby Crying



Count people/objects



Enter area



Detect unusual noises: Gunshot



Use Heat Map



**[www.grundig-security.com](http://www.grundig-security.com)**

Abetechs GmbH (Grundig Security)  
[info@grundig-security.com](mailto:info@grundig-security.com)