

INTELLIGENT VIDEO SURVEILLANCE

Product Guide 2025

GRUNDIG



What should a video surveillance system of today be able to deliver?

Many small to medium-sized systems can manage without any special requirements. Often, it's enough just to save video sequences, so that in case of an incident the course of events can be determined in the light of the recordings. For standard applications like this, GRUNDIG Security offers a comprehensive range: cameras that supply perfect high-resolution images, irrespective of the light conditions, and recorders that store video sequences for weeks or months when required, even if this is rarely done today for reasons of data privacy.

So much for standard applications. But the unique thing about GRUNDIG Security is the uncomplicated forensic search function of the GRUNDIG Video Management System powered by C-WERK®. This makes it possible for you to find the recordings that really interest you in a gigantic archive of video data, with no effort at all and in next to no time.

As an installer or end user of the new GRUNDIG products and solutions, what can you expect? Leaving our tried and tested reliability aside, you will also find a whole lot of image analysis functions, for the most part supported by artificial intelligence

(AI). And there's a lot of functionality available. You can use facial recognition, for instance, to recognise people, or the LPR function to identify vehicle licence plates. Or you can quite simply reduce the frequency of false alarms signalling a spurious break-in or perimeter breach, by classifying objects as 'vehicle', 'person' or 'other'.

Cameras from GRUNDIG Security can see whether your employees are wearing the mandatory helmets or protective gear. They can recognise faces in crowds of people, count heads and determine the length of queues at your supermarket till, so helping you to make the best possible use of your resources. What is more, they can even read body language. If a person shows an unusual or unnatural posture, an alarm will be triggered. So, you will be warned in good time, before your cash machine risks being blown sky-high.

These are just a few examples out of a plethora of possibilities, which the exceptionally flexible video surveillance systems from GRUNDIG Security are able to offer.

So, if you want more than just pretty pictures and long recording times, please get in touch — we'll be happy to hear from you!



Content

Cameras

Box/Cube/Turret	6
Fixed Domes	7
Bullet	9
Panoramic	12
PTZ Domes	13
Thermal Imaging	14

Recorders

Standalone NVR	16
PC based NVR	18
Video Management Software C-WERK®	20

Hardware

Client/ Server PC	24
Switches	25

HD Analogue

Cameras

Box/Cube/Turret/fixed Domes	26
Bullet/PTZ Domes	27

Recorders

Standalone HDVR	28
-----------------	----

Monitors 30

Controllers 31

Accessories 32

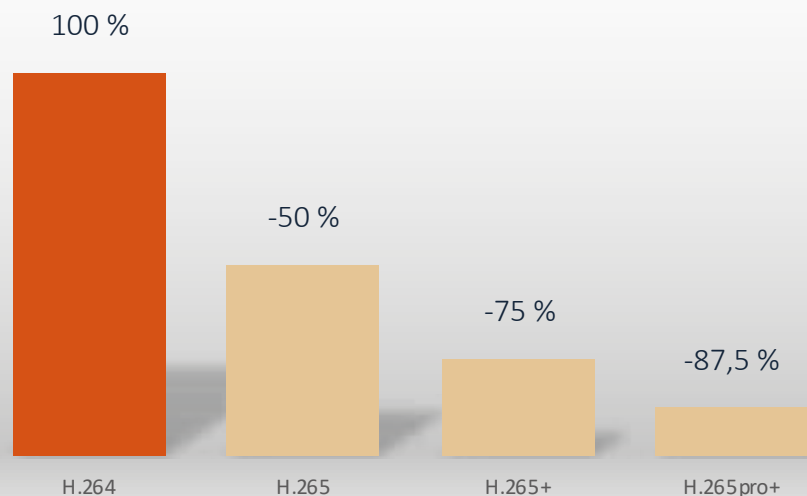


5 Years Extended Guarantee

Grundig has launched a new 5-year Guarantee on “PRO” and “PREMIUM” cameras to further support customers and make project maintenance easier and more cost-effective.

Grundig takes quality seriously and puts a lot of effort into ensuring our products are both innovative and reliable. To give customers greater peace of mind, the 5-year Guarantee will be added for pro premium product on electronic parts from 1 January 2021. Mechanical wear and tear on moving parts is not included. Please note our general delivery terms and conditions.

24 Hour Recording File Size



H.265pro+

Ultra HD security cameras have been in production for a while but were not immediately adopted and widespread because they require excessive transmission bandwidth and enormous storage capacity. The problem can be solved by using H.265pro+ encoding technology, which uses an average of about 87.5% of the bit rate of H.264. As the bit rate of the recorded video material is greatly reduced, the bandwidth and storage costs are also reduced. H.265pro+ is based on the standard format H.265/High Efficiency Video Coding (HEVC). With H.265pro+, the video quality is close to that of H.265/HEVC, but reduces the required transmission bandwidth and storage capacity due to three key technologies: predictive coding, noise reduction and flexible bit rate control. It shows significant improvements in bandwidth reduction, data storage efficiency and the analysis of video content.



Many Grundig Recorders, Cameras and Video Management Software have deep Learning Analytics Functions

The rapid development of algorithms, neural networks, human-machine interfaces and computing power is now taking deep learning applications to a new level. Deep learning has also reached the security industry and enables a number of solutions, not only to improve the security of the company premises and to efficiently suppress unwanted alarms. The benefits of deep learning for attribute recognition and image classification make it extremely valuable in the security arena. It touches every aspect of the security industry — from face and vehicle recognition to behavior analysis. Deep learning is a type of machine learning that trains a computer to analyze human-like tasks like recognizing language, classifying images, recognizing objects, and even people’s behavior. A real example are virtual assistants like Siri and Cortana, some of which are powered by artificial intelligence. Rather than organizing data to loop through predefined equations, deep learning sets basic parameters for the data and trains the computer to learn on its own by recognizing patterns using processing layers.

Cybersecurity

Grundig Security supports internationally recognized cyber security standards and best practices. We make extensive efforts to improve the network security of our products and solutions. We continue to improve and use open and transparent methods so that users can evaluate the cybersecurity features of Grundig products. You can find more detailed information on IT security in our product data sheets and our whitepaper “Cybersecurity”.

						
	GD-CI-AT8505B	GD-CI-AP4617C	GD-CI-BC2615M	GD-CI-AC6614E	GD-CI-AP8617E	GD-CI-CP4637E
	Premium	Professional	Essential	Essential	Professional	Professional
Video Resolution	3840 × 2160	2688 × 1520	1920 × 1080	3200 × 1800	3840 × 2160	2688 × 1520
Sensitivity Colour	0.007 Lux @ F1.2 (AGC ON)	0.01 Lux @ F1.2 (AGC ON)	0.01 Lux @ F2.0 (AGC ON)	0.005 Lux @ F1.6 (AGC ON)	0.005 Lux @ F1.6 (AGC ON)	0.005 Lux @ F1.6 (AGC ON)
Lens Focal Length	—	2.8 mm	3.7 mm	2.8 mm	2.8 mm	2.8 ~ 12 mm motorized, autofocus
Col/B&W	IR-cut filter removable (ICR)	IR-cut filter removable (ICR)	—	IR-cut filter removable (ICR)	IR-cut filter removable (ICR)	IR-cut filter removable (ICR)
Wide Dynamic Range	120 dB	120 dB	120 dB	120 dB	120 dB	120 dB
Image Enhancement	BLC, 3D DNR, Defog, EIS, HLC	BLC, 3D DNR, HLC	BLC, 3D DNR, HLC	BLC, 3D DNR, HLC	BLC, 3D DNR, HLC	BLC, 3D DNR, HLC
Max. IR Distance	—	Up to 10 m	—	Up to 30 m	Up to 30 m	Up to 40 m
Video Compression	H.264, H.264+, H.265, H.265+, MJPEG	H.264, H.264+, H.265, H.265+, MJPEG	H.264, H.265, MJPEG	H.264, H.264+, H.265, H.265+, MJPEG	H.264, H.264+, H.265, H.265+, MJPEG	H.264, H.264+, H.265, H.265+, MJPEG
SD Memory	up to 256G, ANR Function	up to 128G, ANR Function	up to 256G, ANR Function	up to 256G, ANR Function	up to 256G, ANR Function	up to 256G, ANR Function
Video Outputs	1 CVBS Test Monitor output	—	1x CVBS (1 Vcc) BNC	—	—	1x CVBS (1 Vcc) BNC
Alarm Input/Output	yes	—	yes	—	—	yes
Audio Input/Output	yes	—	yes	—	Built-in microphone	yes
Intelligent Video Analytics	MD, PID, LCD, A-IN, A-OUT, SOD, FD, VTD, SD	MD, PID, LCD, FD, VTD	—	MD, VTD	MD, PID, LCD, FD, PD & VD,VTD	MD, PID, LCD, FD, PD & VD,VTD
Surge Protection	—	—	—	—	—	TVS 2000V
Operating Temperature	-30 °C ~ 60 °C (-22 °F ~ 140 °F)	-10 °C ~ 50 °C (-14 °F ~ 122 °F)	-30 °C ~ +55 °C (-22 °F ~ 131 °F)	-30 °C ~ 60 °C (-22 °F ~ 140 °F)	-30 °C ~ 60 °C (-22 °F ~ 140 °F)	-30 °C ~ 60 °C (-22 °F ~ 140 °F)
Supply Voltage	12 VDC, 24 VAC, PoE (IEEE 802.3af)	12 VDC, PoE (IEEE 802.3af)	12 VDC ±10%	12 VDC, PoE (IEEE 802.3af)	12 VDC, PoE (IEEE 802.3af)	12 VDC, PoE (IEEE 802.3af)
Power Consumption	Max. 10 W	Max. 7 W	Max. 3 W	Max. 6.5 W	Max. 7.5 W	Max. 12,5 W



**GD-CI-EC4617V****GD-CI-FC4617V****GD-CI-CC4637V****GD-CI-AP4617V****GD-CI-CP4617W****GD-CI-DP4617W**

	Essential	Essential	Essential	Professional	Professional	Professional
Video Resolution	2560 x 1440	2560 x 1440	2560 x 1440	2688 x 1520	2688 x 1520	2688 x 1520
Sensitivity Colour	0.01 Lux @ F2.0 (AGC ON)	0.01 Lux @ F2.0 (AGC ON)	0.005 Lux @ F1.6 (AGC ON)	0.005 Lux @ F1.6 (AGC ON)	0.005 Lux @ F1.6 (AGC ON)	0.005 Lux @ F1.6 (AGC ON)
Lens Focal Length	2.8 mm	4 mm	2.8 ~ 12 mm motorized, autofocus	2.8 mm	2.8 mm	4 mm
Col/B&W	IR-cut filter removable (ICR)	IR-cut filter removable (ICR)	IR-cut filter removable (ICR)	IR-cut filter removable (ICR)	IR-cut filter removable (ICR)	IR-cut filter removable (ICR)
Wide Dynamic Range	120 dB	120 dB	120 dB	120 dB	120 dB	120 dB
Image Enhancement	BLC, 3D DNR, HLC	BLC, 3D DNR, HLC	BLC, 3D DNR, HLC	BLC, 3D DNR, HLC	BLC, 3D DNR, HLC	BLC, 3D DNR, HLC
Max. IR Distance	Up to 30 m	Up to 30 m	Up to 30 m	Up to 30 m	Up to 30 m	Up to 30 m
Video Compression	H.264, H.264+, H.265, H.265+, MJPEG	H.264, H.264+, H.265, H.265+, MJPEG	H.264, H.264+, H.265, H.265+, MJPEG	H.264, H.264+, H.265, H.265+, MJPEG	H.264, H.264+, H.265, H.265+, MJPEG	H.264, H.264+, H.265, H.265+, MJPEG
SD Memory	—	—	up to 256G, ANR Function	up to 256G, ANR Function	up to 256G, ANR Function	up to 256G, ANR Function
Video Outputs	—	—	—	—	—	—
Alarm Input/Output	—	—	—	yes	yes	yes
Audio Input/Output	—	—	—	yes	yes	yes
Intelligent Video Analytics	MD, VTD	MD, VTD	MD, VTD	MD, PID, LCD, FD, VTD	MD, PID, LCD, FD, PD & VD,VTD	MD, PID, LCD, FD, PD & VD,VTD
Surge Protection	—	—	—	TVS 2000V	—	—
Operating Temperature	-30 °C ~ 60 °C (-22 °F ~ 140 °F)	-30 °C ~ 60 °C (-22 °F ~ 140 °F)	-30 °C ~ 60 °C (-22 °F ~ 140 °F)	-40 °C ~ 60 °C (-40 °F ~ 140 °F)	-30 °C ~ 60 °C (-22 °F ~ 140 °F)	-30 °C ~ 60 °C (-22 °F ~ 140 °F)
Supply Voltage	12 VDC, PoE (IEEE 802.3af)	12 VDC, PoE (IEEE 802.3af)	12 VDC, PoE (IEEE 802.3af)	12 VDC, PoE (IEEE 802.3af)	12 VDC, PoE (IEEE 802.3af)	12 VDC, PoE (IEEE 802.3af)
Power Consumption	Max. 6.5 W	Max. 6.5 W	Max. 11.5 W	Max. 6.5 W	Max. 6.5 W	Max. 6.5 W





GD-CI-AP2627V

GD-CI-CP4637V

GD-CI-AP6637V

GD-CI-BP8637V

GD-CI-BT4537VH

GD-CI-AT4634V

GD-CI-CT12617F

	Professional	Professional	Professional	Professional	Premium	Premium	Premium
Video Resolution	1920 x 1080	2688 x 1520	3200 x 1800	3840 x 2160	2688 x 1520	2688 x 1520	3504 x 3504
Sensitivity Colour	0.005 Lux @ F1.2 (AGC ON)	0.003 Lux @ F1.4 (AGC ON)	0.001 Lux @ F1.2 (AGC on, shutter speed 1/25 s)	0.003 Lux @ F1.4 (AGC ON)	0.0014 Lux @ F1.4 (AGC ON)	0.001 Lux @ F1.2 (AGC on, shutter speed 1/25 s)	0.006 Lux
Lens Focal Length	2.8 ~ 12 mm motorized, autofocus	2.8 ~ 12 mm motorized, autofocus	2.8 ~ 12 mm motorized, autofocus	2.8 ~ 12 mm motorized, autofocus	2.8 ~ 12 mm motorized, autofocus	2.7 ~ 13.5 mm motorized, autofocus	1.29 mm
Col/B&W	IR-cut filter removable (ICR)	IR-cut filter removable (ICR)	IR-cut filter removable (ICR)	IR-cut filter removable (ICR)	IR-cut filter removable (ICR)	IR-cut filter removable (ICR)	IR-cut filter removable (ICR)
Wide Dynamic Range	120 dB	120 dB	120 dB	120 dB	140 dB	130 dB	Digital WDR
Image Enhancement	BLC, 3D DNR, HLC	BLC, 3D DNR, HLC, AWB, AGC, AES	BLC, 3D DNR, HLC	BLC, 3D DNR, HLC	BLC, 3D DNR, Defog, HLC	BLC, 3D DNR, Defog, HLC	BLC, 3D DNR, Defog, HLC
Max. IR Distance	Up to 30 m	Up to 40 m	Up to 40 m	Up to 40 m	Up to 40 m	Up to 40 m	Up to 15 m
Video Compression	H.264, H.264+, H.265, H.265+, MJPEG	H.264, H.264+, H.265, H.265+, MJPEG	H.264, H.264+, H.265, H.265+, MJPEG	H.264, H.264+, H.265, H.265+, MJPEG	H.264, H.264+, H.265, H.265+, MJPEG	H.264, H.264+, H.265, H.265+, MJPEG	H.264, H.264+, H.265, H.265+, MJPEG
SD Memory	up to 128G, ANR Function	up to 256G, ANR Function	up to 256G, ANR Function	up to 256G, ANR Function	up to 512G, ANR Function	up to 512G, ANR Function	up to 256G, ANR Function
Video Outputs	1 CVBS Test Monitor output	—	—	1 CVBS Test Monitor output	—	—	—
Alarm Input/Output	yes	yes	yes	yes	yes	yes	yes
Audio Input/Output	yes	yes	yes	yes	yes	yes	yes
Intelligent Video Analytics	MD, PID, LCD, SOD, FD, VTD	MD, VTD, AD	MD, PID, LCD, FD, PD & VD, VTD	MD, PID, LCD, A-IN, A-OUT, FD, PD & VD, VTD	MD, PID, LCD, A-IN, A-OUT, SOD, FD, PD & VD, VTD	MD, PID, LCD, A-IN, A-OUT, SOD, FD, PD & VD, VTD	MD, PID, LCD, A-IN, A-OUT, SOD, VTD
Surge Protection	TVS 2000V	—	—	TVS 2000V	TVS 2000V	TVS 2000V	—
Operating Temperature	-40 °C ~ 60 °C (-40 °F ~ 140 °F)	-30 °C ~ 60 °C (-22 °F ~ 140 °F)	-30 °C ~ 60 °C (-22 °F ~ 140 °F)	-30 °C ~ 60 °C (-22 °F ~ 140 °F)	-40 °C ~ 60 °C (-40 °F ~ 140 °F)	-30 °C ~ 60 °C (-22 °F ~ 140 °F)	-40 °C ~ 60 °C (-40 °F ~ 140 °F)
Supply Voltage	12 VDC, PoE (IEEE 802.3af)	12 VDC, PoE (IEEE 802.3af)	12 VDC, PoE (IEEE 802.3af)	12 VDC, PoE (IEEE 802.3af)	12 VDC, 24 VAC, PoE (IEEE 802.3af)	12 VDC, 24 VAC, PoE (IEEE 802.3af)	12 VDC, PoE (IEEE 802.3af)
Power Consumption	Max. 11 W	Max. 11 W	Max. 12,5 W	Max. 12,5 W	Max. 12,9 W	Max. 15 W	Max. 10 W





	GD-CI-CC2616T	GD-CI-DC2616T	GD-CI-EC4617T	GD-CI-FC4617T	GD-CI-CC4637T	GD-CI-AP4617T
	Essential	Essential	Essential	Essential	Essential	Professional
Video Resolution	1920 x 1080	1920 x 1080	2560 x 1440	2560 x 1440	2560 x 1440	2688 x 1520
Sensitivity Colour	0.01 Lux @ F2.0 (AGC ON)	0.01 Lux @ F2.0 (AGC ON)	0.01 Lux @ F2.0 (AGC ON)	0.01 Lux @ F2.0 (AGC ON)	0.005 Lux @ F1.6 (AGC ON)	0.01 Lux @ F1.2 (AGC ON)
Lens Focal Length	2.8 mm	4 mm	2.8 mm	4 mm	2.8 ~ 12 mm motorized, autofocus	4 mm
Col/B&W	IR-cut filter removable (ICR)	IR-cut filter removable (ICR)	IR-cut filter removable (ICR)	IR-cut filter removable (ICR)	IR-cut filter removable (ICR)	IR-cut filter removable (ICR)
Wide Dynamic Range	72 db (Digital Wide Dynamic Range)	72 db (Digital Wide Dynamic Range)	120 dB	120 dB	120 dB	120 dB
Image Enhancement	BLC, 3D DNR	BLC, 3D DNR	BLC, 3D DNR, HLC	BLC, 3D DNR, HLC	BLC, 3D DNR, HLC	BLC, 3D DNR, HLC
Max. IR Distance	Up to 30 m	Up to 30 m	Up to 30 m	Up to 30 m	Up to 50 m	Up to 50 m
Video Compression	H.264, H.264+, H.265, H.265+, MJPEG	H.264, H.264+, H.265, H.265+, MJPEG	H.264, H.264+, H.265, H.265+, MJPEG	H.264, H.264+, H.265, H.265+, MJPEG	H.264, H.264+, H.265, H.265+, MJPEG	H.264, H.264+, H.265, H.265+, MJPEG
SD Memory	—	—	—	—	up to 256G	up to 128G, ANR Function
Video Outputs	—	—	—	—	—	—
Alarm Input/Output	—	—	—	—	—	—
Audio Input/Output	—	—	—	—	—	—
Intelligent Video Analytics	MD, VTD	MD, VTD	MD, VTD	MD, VTD	MD, VTD	MD, PID, LCD, FD, VTD
Surge Protection	—	—	—	—	—	TVS 2000V
Operating Temperature	-40 °C ~ 60 °C (-40 °F ~ 140 °F)	-40 °C ~ 60 °C (-40 °F ~ 140 °F)	-30 °C ~ 60 °C (-22 °F ~ 140 °F)	-30 °C ~ 60 °C (-22 °F ~ 140 °F)	-30 °C ~ 60 °C (-22 °F ~ 140 °F)	-30 °C ~ 60 °C (-22 °F ~ 140 °F)
Supply Voltage	12 VDC, PoE (IEEE 802.3af)	12 VDC, PoE (IEEE 802.3af)	12 VDC, PoE (IEEE 802.3af)	12 VDC, PoE (IEEE 802.3af)	12 VDC, PoE (IEEE 802.3af)	12 VDC, PoE (IEEE 802.3af)
Power Consumption	Max. 6.5 W	Max. 6.5 W	Max. 6.5 W	Max. 6.5 W	Max. 12.9 W	Max. 9.5 W





GD-CI-AP4637T



GD-CI-AP6637T



GD-CI-BP8637T



GD-CI-CT4537TH



GD-CI-DT4637T



GD-CI-ET4637T

	Professional	Professional	Professional	Premium	Premium	Premium
Video Resolution	2560 x 1440	3200 x 1800	3840 x 2160	2688 x 1520	2688 x 1520	2688 x 1520
Sensitivity Colour	0.003 Lux @ F1.4 (AGC ON)	0.005 Lux @ F1.6 (AGC ON)	0.003 Lux @ F1.4 (AGC ON)	0.0014 Lux @ F1.4 (AGC ON)	0.0005 Lux @ F1.2 (AGC ON)	0.0005 Lux @ F1.2 (AGC ON)
Lens Focal Length	2.8 ~ 12 mm motorized, autofocus	2.8 ~ 12 mm motorized, autofocus	2.8 ~ 12 mm motorized, autofocus	2.8 ~ 12 mm motorized, autofocus	2.8 ~ 12 mm motorized, autofocus	8 ~ 32 mm motorized, autofocus
Col/B&W	IR-cut filter removable (ICR)	IR-cut filter removable (ICR)	IR-cut filter removable (ICR)	IR-cut filter removable (ICR)	IR-cut filter removable (ICR)	IR-cut filter removable (ICR)
Wide Dynamic Range	120 dB	120 dB	120 dB	140 dB	140 dB	140 dB
Image Enhancement	BLC, 3D DNR, HLC	BLC, 3D DNR, HLC	BLC, 3D DNR, HLC	BLC, 3D DNR, Defog, HLC	BLC, 3D DNR, Defog, EIS, HLC	BLC, 3D DNR, Defog, EIS, HLC
Max. IR Distance	Up to 60 m	Up to 60 m	Up to 60 m	Up to 60 m	Up to 50 m	Up to 100 m
Video Compression	H.264, H.264+, H.265, H.265+, MJPEG	H.264, H.264+, H.265, H.265+, MJPEG	H.264, H.264+, H.265, H.265+, MJPEG	H.264, H.264+, H.265, H.265+, MJPEG	H.264, H.264+, H.265, H.265+, MJPEG	H.264, H.264+, H.265, H.265+, MJPEG
SD Memory	up to 256G, ANR Function	up to 256G, ANR Function	up to 256G, ANR Function	up to 512G, ANR Function	up to 1T, ANR Function	up to 1T, ANR Function
Video Outputs	—	—	—	—	1 CVBS Test Monitor output	1 CVBS Test Monitor output
Alarm Input/Output	yes	yes	yes	yes	yes	yes
Audio Input/Output	yes	yes	yes	yes	—	—
Intelligent Video Analytics	MD, PID, LCD, A-IN, A-OUT, FD, PD & VD, VTD	MD, PID, LCD, FD, PD & VD, VTD	MD, PID, LCD, A-IN, A-OUT, FD, PD & VD, VTD	MD, PID, LCD, A-IN, A-OUT, SOD, FD, PD & VD, VTD	MD, PID, LCD, A-IN, A-OUT, SOD, FD, VTD, LPR	MD, PID, LCD, A-IN, A-OUT, SOD, FD, VTD, LPR
Surge Protection	TVS 2000V	—	TVS 2000V	TVS 2000V	—	—
Operating Temperature	-30 °C ~ 60 °C (-22 °F ~ 140 °F)	-30 °C ~ 60 °C (-22 °F ~ 140 °F)	-30 °C ~ 60 °C (-22 °F ~ 140 °F)	-40 °C ~ 60 °C (-40 °F ~ 140 °F)	-40 °C ~ 60 °C (-40 °F ~ 140 °F)	-40 °C ~ 60 °C (-40 °F ~ 140 °F)
Supply Voltage	12 VDC, PoE (IEEE 802.3at)	12 VDC, PoE (IEEE 802.3at)	12 VDC, PoE (IEEE 802.3at)	12 VDC, 24 VAC, PoE (IEEE 802.3at)	12 VDC, PoE (IEEE 802.3at)	12 VDC, PoE (IEEE 802.3at)
Power Consumption	Max. 15 W	Max. 15 W	Max. 15 W	Max. 18 W	Max. 17 W	Max. 17 W





GD-CI-ET4537TH

GD-CI-AT4634T

GD-CI-CT4537T

GD-CI-CT8637T

GD-CI-BT8537TH

GD-CI-AT12637T

	Premium	Premium	Premium	Premium	Premium	Premium
Video Resolution	2688 × 1520	2688 × 1520	2688 × 1520	3840 × 2160	3840 × 2160	4000 × 3000
Sensitivity Colour	0.0014 Lux @ F1.4 (AGC ON)	0.001 Lux @ F1.2 (AGC on, shutter speed 1/25 s)	0.009 Lux @ F1.6 (AGC ON)	0.002 Lux @ F1.2 (AGC ON)	0.004 Lux @ F1.2 (AGC ON)	0.009 Lux @ F1.2 (AGC ON)
Lens Focal Length	8 ~ 32 mm motorized, autofocus	2.7 ~ 13.5 mm motorized, autofocus	4.7 ~ 118 mm motorized, autofocus	8 ~ 32 mm motorized, autofocus	2.8 ~ 12 mm motorized, autofocus	8 ~ 32 mm motorized, autofocus
Col/B&W	IR-cut filter removable (ICR)	IR-cut filter removable (ICR)	IR-cut filter removable (ICR)	IR-cut filter removable (ICR)	IR-cut filter removable (ICR)	IR-cut filter removable (ICR)
Wide Dynamic Range	140 dB	130 dB	140 dB	120 dB	120 dB	Digital WDR
Image Enhancement	BLC, 3D DNR, Defog, HLC	BLC, 3D DNR, Defog, HLC	BLC, 3D DNR, Defog, EIS, HLC	BLC, 3D DNR, Defog, EIS, HLC	BLC, 3D DNR, HLC	BLC, 3D DNR, Defog, EIS, HLC, Distortion Correction
Max. IR Distance	Up to 60 m	Up to 60 m	Up to 200m	Up to 100 m	Up to 60 m	Up to 100 m
Video Compression	H.264, H.264+, H.265, H.265+, MJPEG	H.264, H.264+, H.265, H.265+, MJPEG	H.264, H.264+, H.265, H.265+, MJPEG	H.264, H.264+, H.265, H.265+, MJPEG	H.264, H.264+, H.265, H.265+, MJPEG	H.264, H.264+, H.265, H.265+, MJPEG
SD Memory	up to 512G, ANR Function	up to 512G, ANR Function	up to 256G, ANR Function	up to 256G, ANR Function	up to 256G, ANR Function	up to 256G, ANR Function
Video Outputs	—	—	—	1 CVBS Test Monitor output	—	1 CVBS Test Monitor output
Alarm Input/Output	yes	yes	yes	yes	yes	yes
Audio Input/Output	yes	yes	yes	—	yes	—
Intelligent Video Analytics	MD, PID, LCD, A-IN, A-OUT, SOD, FD, PD & VD, VTD	MD, PID, LCD, A-IN, A-OUT, SOD, FD, PD & VD, VTD	MD, PID, LCD, A-IN, A-OUT, FR, VTD, PD & VD, SD, AD	—	MD, PID, LCD, A-IN, A-OUT	MD, PID, PD & VD, FR, QD, CC, AD
Surge Protection	TVS 2000V	TVS 2000V	TVS 4000V	—	TVS 2000V	—
Operating Temperature	-40 °C ~ 60 °C (-40 °F ~ 140 °F)	-40 °C ~ 60 °C (-40 °F ~ 140 °F)	-40 °C ~ 60 °C (-40 °F ~ 140 °F)	-40 °C ~ 60 °C (-40 °F ~ 140 °F)	-40 °C ~ 60 °C (-40 °F ~ 140 °F)	-40 °C ~ 60 °C (-40 °F ~ 140 °F)
Supply Voltage	12 VDC, 24 VAC, PoE (IEEE 802.3at)	12 VDC, 24 VAC, PoE (IEEE 802.3at)	12 VDC, 24 VAC, PoE (IEEE 802.3at)	12 VDC, PoE (IEEE 802.3at)	12 VDC, 24 VAC, PoE (IEEE 802.3at)	12 VDC, PoE (IEEE 802.3at)
Power Consumption	Max. 18 W	Max. 15 W	Max. 12 W	Max. 18 W	Max. 15 W	Max. 18 W



**GD-CI-AT30516Q**

	Premium
Video Resolution	8160 x 3616
Sensitivity Colour	0.009 Lux @ F1.2 (AGC ON)
Lens Focal Length	4 x 3 mm
Col/B&W	IR-cut filter removable (ICR)
Wide Dynamic Range	Digital WDR
Image Enhancement	BLC, 3D DNR, Defog, EIS, HLC
Max. IR Distance	Up to 20 m
Video Compression	H.264, H.264+, H.265, H.265+, MJPEG
SD Memory	up to 128G, ANR Function
Video Outputs	—
Alarm Input/Output	yes
Audio Input/Output	yes
Intelligent Video Analytics	PID, LCD, VTD
Surge Protection	—
Operating Temperature	-40 °C ~ 60 °C (-40 °F ~ 140 °F)
Supply Voltage	24 VAC, PoE+ (IEEE 802.3at)
Power Consumption	Max. 25 W



DEWARP

Dewarping is used to equalize an all-around image of a „fisheye camera“. With dewarping, the respectively selected image area is converted for the viewer in the respective dimensions and the selected viewing angle — and thus equalized. You control the view like a pan / tilt camera or you can view the scene in several windows in a panoramic view.

The Dewarp function is also supported from the GRUNDIG NVRs of the Pro-and Premium-series.

GD-CI-CT12617F with Immervision® panomorph optical design outperforms all competing technologies.



							
	GD-CI-AC4637P	GD-CI-CP2647P	GD-CI-CP2747P	GD-CI-AP4647P	GD-CI-AP4747P	GD-CI-BT4747P	GD-CI-AT8747P
	Essential	Professional	Professional	Professional	Professional	Premium	Premium
Image Sensor	1/2.8" progressive Scan CMOS	1/2.8" progressive Scan CMOS	1/2.8" progressive Scan CMOS	1/2.8" progressive Scan CMOS	1/1.8" progressive Scan CMOS	1/1.8" progressive Scan CMOS	1/1.8" progressive Scan CMOS
Video Resolution	2560 x 1440	1920 x 1080	1920 x 1080	2560 x 1440	2560 x 1440	2688 x 1520	3840 x 2160
Sensitivity Colour	0.005 Lux @ F1.5 (AGC ON)	0.005 Lux @ F1.6 (AGC ON)	0.005 Lux @ F1.6 (AGC ON)	0.005 Lux @ F1.6 (AGC ON)	0.005 Lux @ F1.5 (AGC ON)	0.001 Lux @ F1.2 (AGC ON)	0.005 Lux
Lens Focal Length	2.8 ~ 12 mm motorized, autofocus	4.8 ~ 120 mm motorized, autofocus	4.8 ~ 153 mm motorized, autofocus	4.8 ~ 120 mm motorized, autofocus	5.9 ~ 188.8 mm motorized, autofocus	6.0 ~ 252 mm, 42x Optical Zoom	6.0 ~ 252 mm, 42x Optical Zoom
Optical Zoom Ratio	4x	25x	32x	25x	32x	42x	42x
Col/B&W	Removable IR-Cut Filter (ICR)	Removable IR-Cut Filter (ICR)	Removable IR-Cut Filter (ICR)	Removable IR-Cut Filter (ICR)	Removable IR-Cut Filter (ICR)	Removable IR-Cut Filter (ICR)	Removable IR-Cut Filter (ICR)
Number of Privacy Zones	24 programmable zones	24 programmable zones	24 programmable zones	24 programmable zones	24 programmable zones	24 programmable zones	24 programmable zones
Image Enhancement	BLC, 3D DNR, Defog, HLC	BLC, 3D DNR, Defog, HLC, AGC, Regional Exposure, Regional Focus	BLC, 3D DNR, Defog, EIS, HLC, AGC, Regional Exposure, Regional Focus	BLC, 3D DNR, Defog, EIS, HLC, AGC, Regional Exposure, Regional Focus	BLC, 3D DNR, Defog, EIS, HLC, AGC, Regional Exposure, Regional Focus	BLC, 3D DNR, Defog, EIS, HLC, AGC, Regional Exposure, Regional Focus	BLC, 3D DNR, Defog, EIS, HLC, AGC, Regional Exposure, Regional Focus, Rapid Focus
Max. IR Distance	Up to 20 m	Up to 50 m	Up to 200m	Up to 100 m	Up to 200m	Up to 400m	Up to 500m
SD Memory	up to 256G, ANR Function	up to 256G, ANR Function	up to 256G, ANR Function	up to 256G, ANR Function	up to 256G, ANR Function	up to 256G, ANR Function	up to 256G, ANR Function
Video Outputs	—	—	—	—	—	1x CVBS (1 Vcc) BNC	1x CVBS (1 Vcc) BNC
Alarm Input/Output	—	yes	yes	yes	yes	yes	yes
Audio Input/Output	yes	yes	yes	yes	yes	yes	yes
Surge Protection	TVS 4000V	TVS 6000V	TVS 6000V	TVS 6000V	TVS 6000V	TVS 6000V	TVS 6000V
Operating Temperature	-20 °C ~ 60 °C (-4 °F ~ 140 °F)	-30 °C ~ +65 °C (-22 °F ~ 149 °F)	-40 °C ~ 65 °C (-40 °F ~ 149 °F)	-30 °C ~ +65 °C (-22 °F ~ 149 °F)	-30 °C ~ +65 °C (-22 °F ~ 149 °F)	-40 °C ~ 70 °C (-40 °F ~ 158 °F)	-40 °C ~ 70 °C (-40 °F ~ 158 °F)
Supply Voltage	12 VDC, PoE (IEEE 802.3af)	12 VDC, PoE (IEEE 802.3at)	24 VAC, Hi-PoE (IEEE 802.3bt)	12 VDC, PoE (IEEE 802.3at)	24 VAC, Hi-PoE (IEEE 802.3bt)	24 VAC, Hi-PoE (IEEE 802.3bt)	24 VAC, Hi-PoE (IEEE 802.3bt)
Power Consumption	Max. 12 W	Max. 24 W	Max. 42 W	Max. 18 W	Max. 42 W	Max. 60W	Max. 60W
Power Consumption	Max. 12 W	Max. 18 W	Max. 42 W	Max. 18 W	Max. 42 W	Max. 60W	Max. 60W





GD-TI-AP1614V



GD-TI-BP1603V



GD-TI-AP4607V



GD-TI-BP1603T



GD-TI-BP1606T



GD-TI-BP1610T



GD-TI-AP4503T

	Professional	Professional	Professional	Professional	Professional	Professional	Professional
Thermal Sensor	Vanadium Oxide Uncooled Focal Plane Array	Vanadium Oxide Uncooled Focal Plane Array	Vanadium Oxide Uncooled Focal Plane Array	Vanadium Oxide Uncooled Focal Plane Array	Vanadium Oxide Uncooled Focal Plane Array	Vanadium Oxide Uncooled Focal Plane Array	Vanadium Oxide Uncooled Focal Plane Array
Resolution (Thermal)	160 x 120	160 x 120	256 x 192	160 x 120	160 x 120	160 x 120	256 x 192
NETD	< 40 mk (@25° C, F=1.0)	< 40 mk (@25° C, F=1.0)	< 40 mk (@25° C, F=1.0)	< 40 mk (@25° C, F=1.0)	< 40 mk (@25° C, F=1.0)	< 40 mk (@25° C, F=1.0)	< 40 mk (@25° C, F=1.0)
Viewing Angle (IR)	90° x 66.4° (HxV)	50° x 37.2° (HxV)	25° x 18.7° (HxV)	50° x 37.2° (HxV)	25° x 18.7° (HxV)	15.96° x 12° (HxV)	50° x 37.2° (HxV)
Detector Pitch	17 µm	17 µm	12 µm	17 µm	17 µm	17 µm	12 µm
Image Sensor	1/2.7" progressive Scan CMOS	1/2.7" progressive Scan CMOS	1/2.7" progressive Scan CMOS	1/2.7" progressive Scan CMOS	1/2.7" progressive Scan CMOS	1/2.7" progressive Scan CMOS	1/2.7" progressive Scan CMOS
Video Resolution	2688 x 1520	2688 x 1520	2688 x 1520	2688 x 1520	2688 x 1520	2688 x 1520	2688 x 1520
Sensitivity Colour	0.0176 Lux @ F2.25 (AGC ON)	0.0176 Lux @ F2.25 (AGC ON)	0.0035 Lux @ F2.25 (AGC ON)	0.0176 Lux @ F2.25 (AGC ON)	0.0176 Lux @ F2.25 (AGC ON)	0.0176 Lux @ F2.25 (AGC ON)	0.0089Lux @ F1.6 (AGC ON)
Lens Focal Length	2.1 mm	4 mm	6,4 mm	4 mm	8 mm	8 mm	4.3 mm
Video Compression	H.264, H.265, MJPEG	H.264, H.265, MJPEG	H.264, H.265, MJPEG	H.264, H.265, MJPEG	H.264, H.265, MJPEG	H.264, H.265, MJPEG	H.264, H.265, MJPEG
Accuracy	± 8°C	± 8°C	± 8°C	± 8°C	± 8°C	± 8°C	± 8°C
Measurement option	Support 3 temperature measurement rule types, 21 rules (10 points, 10 regions and 1 line)	Support 3 temperature measurement rule types, 21 rules (10 points, 10 regions and 1 line)	Support 3 temperature measurement rule types, 21 rules (10 points, 10 regions and 1 line)	Support 3 temperature measurement rule types, 21 rules (10 points, 10 regions and 1 line)	Support 3 temperature measurement rule types, 21 rules (10 points, 10 regions and 1 line)	Support 3 temperature measurement rule types, 21 rules (10 points, 10 regions and 1 line)	Support 3 temperature measurement rule types, 21 rules (10 points, 10 regions and 1 line)
Intelligent Video Analytics	PID, LCD, A-IN, A-OUT, PD & VD, Smoke	PID, LCD, A-IN, A-OUT, PD & VD, Smoke	PID, LCD, A-IN, A-OUT, PD & VD, Smoke	PID, LCD, A-IN, A-OUT, PD & VD, Smoke	PID, LCD, A-IN, A-OUT, PD & VD, Smoke	PID, LCD, A-IN, A-OUT, PD & VD, Smoke	PID, LCD, A-IN, A-OUT, PD & VD, Smoke
Operating Temperature	-40 °C ~ 65 °C (-40 °F ~ 149 °F)	-40 °C ~ 65 °C (-40 °F ~ 149 °F)	-40 °C ~ 65 °C (-40 °F ~ 149 °F)	-40 °C ~ 65 °C (-40 °F ~ 149 °F)	-40 °C ~ 65 °C (-40 °F ~ 149 °F)	-40 °C ~ 65 °C (-40 °F ~ 149 °F)	-40 °C ~ 65 °C (-40 °F ~ 149 °F)
Supply Voltage	12 VDC, PoE (IEEE 802.3af)	12 VDC, PoE (IEEE 802.3af)	12 VDC, PoE (IEEE 802.3af)	12 VDC, PoE (IEEE 802.3af)	12 VDC, PoE (IEEE 802.3af)	12 VDC, PoE (IEEE 802.3af)	12 VDC, 24 VAC, PoE (IEEE 802.3af)
Power Consumption	Max. 6 W	Max. 6 W	Max. 6 W	Max. 6.5 W	Max. 6.5 W	Max. 6.5 W	Max. 8.2 W





GD-TI-AP4507T



GD-TI-AP4510T



GD-TI-AT2604T



GD-TI-AT2607T



GD-TI-AT2610T



GD-TI-CT2510T



GD-TI-AT3625T

	Professional	Professional	Premium	Premium	Premium	Premium	Premium
Thermal Sensor	Vanadium Oxide Uncooled Focal Plane Array	Vanadium Oxide Uncooled Focal Plane Array	Vanadium Oxide Uncooled Focal Plane Array	Vanadium Oxide Uncooled Focal Plane Array	Vanadium Oxide Uncooled Focal Plane Array	Vanadium Oxide Uncooled Focal Plane Array	Vanadium Oxide Uncooled Focal Plane Array
Resolution (Thermal)	256 x 192	256 x 192	384 x 288	384 x 288	384 x 288	384 x 288	640 x 512
NETD	< 40 mk (@25° C, F=1.0)	< 40 mk (@25° C, F=1.0)	< 35 mk (@25° C, F=1.0)	< 35 mk (@25° C, F=1.0)	< 35 mk (@25° C, F=1.0)	< 35 mk (@25° C, F=1.0)	< 35 mk (@25° C, F=1.0)
Viewing Angle (IR)	24.5° x 18.5° (HxV)	18° x 13.5° (HxV)	60° x 44.1° (HxV)	42° x 32° (HxV)	26° x 20° (HxV)	37.5° x 28.5° (HxV)	24.5° x 18.5° (HxV)
Detector Pitch	12 µm	12 µm	12 µm	12 µm	12 µm	17 µm	17 µm
Image Sensor	1/2.7" progressive Scan CMOS	1/2.7" progressive Scan CMOS	—	—	—	1/2.7" progressive Scan CMOS	—
Video Resolution	2688 x 1520	2688 x 1520	—	—	—	2688 x 1520	—
Sensitivity Colour	0.0089Lux @ F1.6 (AGC ON)	0.0089Lux @ F1.6 (AGC ON)	—	—	—	0.0089Lux @ F1.6 (AGC ON)	—
Lens Focal Length	6.4 mm	8 mm	—	—	—	4 mm	—
Video Compression	H.264, H.265, MJPEG	H.264, H.265, MJPEG	H.264, H.265, MJPEG	H.264, H.265, MJPEG	H.264, H.265, MJPEG	H.264, H.265, MJPEG	H.264, H.265, MJPEG
Accuracy	± 8°C	± 8°C	± 8°C	± 8°C	± 8°C	± 8°C	± 8°C
Measurement option	Support 3 temperature measurement rule types, 21 rules (10 points, 10 regions and 1 line)	Support 3 temperature measurement rule types, 21 rules (10 points, 10 regions and 1 line)	Support 3 temperature measurement rule types, 21 rules (10 points, 10 regions and 1 line)	Support 3 temperature measurement rule types, 21 rules (10 points, 10 regions and 1 line)	Support 3 temperature measurement rule types, 21 rules (10 points, 10 regions and 1 line)	Support 3 temperature measurement rule types, 21 rules (10 points, 10 regions and 1 line)	Support 3 temperature measurement rule types, 21 rules (10 points, 10 regions and 1 line)
Intelligent Video Analytics	PID, LCD, A-IN, A-OUT, PD & VD, Smoke	PID, LCD, A-IN, A-OUT, PD & VD, Smoke	PID, LCD, A-IN, A-OUT, PD & VD, Smoke	PID, LCD, A-IN, A-OUT, PD & VD, Smoke	PID, LCD, A-IN, A-OUT, PD & VD, Smoke	PID, LCD, A-IN, A-OUT, PD & VD, Smoke	PID, LCD, A-IN, A-OUT, PD & VD, Smoke
Operating Temperature	-40 °C ~ 65 °C (-40 °F ~ 149 °F)	-40 °C ~ 65 °C (-40 °F ~ 149 °F)	-40 °C ~ 65 °C (-40 °F ~ 149 °F)	-40 °C ~ 65 °C (-40 °F ~ 149 °F)	-40 °C ~ 65 °C (-40 °F ~ 149 °F)	-40 °C ~ 65 °C (-40 °F ~ 149 °F)	-40 °C ~ 65 °C (-40 °F ~ 149 °F)
Supply Voltage	12 VDC, 24 VAC, PoE (IEEE 802.3af)	12 VDC, 24 VAC, PoE (IEEE 802.3af)	12 VDC, 24 VAC, PoE (IEEE 802.3af)	12 VDC, 24 VAC, PoE (IEEE 802.3af)	12 VDC, 24 VAC, PoE (IEEE 802.3af)	12 VDC, 24 VAC, PoE (IEEE 802.3af)	12 VDC, PoE (IEEE 802.3af)
Power Consumption	Max. 8.2 W	Max. 8.2 W	Max. 5.5 W	Max. 5 W	Max. 5.5 W	Max. 9.5 W	Max. 5 W





GD-RN-BC2004P

GD-RN-BC2416N

GD-RN-BC2416P

GD-RN-BP8616P

GD-RN-BP8632N

	Essential	Essential	Essential	Professional	Professional
IP Inputs	4 channels	16 channels	16 channels	16 channels	32 channels
Recording Bandwidth	max. 40 Mbps	160 Mbps	160 Mbps	160 Mbps	256 Mbps
Outgoing Bandwidth	80 Mbps	max. 160 Mbps	max. 160 Mbps	256 Mbps	256 Mbps
Recording Resolution	Max. 12 MP	Max. 12 MP	Max. 12 MP	Max. 32 MP	Max. 32 MP
Video Compression	H.264, H.264+, H.265, H.265+	H.264, H.264+, H.265, H.265+	H.264, H.264+, H.265, H.265+	H.264, H.264+, H.265, H.265+	H.264, H.264+, H.265, H.265+
Recording Mode	Continuous, Event Alarm, Motion, Video Loss, Schedule	Continuous, Event Alarm, Motion, Video Loss, Schedule	Continuous, Event Alarm, Motion, Video Loss, Schedule	Continuous, Event Alarm, Motion, Video Loss, Schedule	Continuous, Event Alarm, Motion, Video Loss, Schedule
Search Mode	Date, Time, Event Alarm, Motion, Search Backup	Date, Time, Event Alarm, Motion, Search Backup	Date, Time, Event Alarm, Motion, Search Backup	Date, Time, Event Alarm, Motion, Search Backup	Date, Time, Event Alarm, Motion, Search Backup
External Backup	USB HDD, USB Memory, DVD-R, Network	USB HDD, USB Memory, DVD-R, Network	USB HDD, USB Memory, DVD-R, Network	USB HDD, USB Memory, USB DVD-R, Network	USB HDD, USB Memory, USB DVD-R, Network
HDMI Output	4K (3840x2160)	4K (3840x2160)	4K (3840x2160)	4K (3840x2160)	4K (3840x2160)
Harddisk bay	1 x SATA III	2 x SATA	2 x SATA	4 x SATA III, 1 x eSATA	4 x SATA III, 1 x eSATA
Max. Storage Capacity	Up to 10TB capacity for each HDD (not mandatory)	Up to 10TB capacity for each HDD	Up to 10TB capacity for each HDD	Up to 10TB capacity for each HDD, max 40TB in total	Up to 10TB capacity for each HDD, max 40TB in total
Audio Inputs	—	—	—	1-ch, RCA (2.0 Vp-p, 1kΩ)	1-ch, RCA (2.0 Vp-p, 1kΩ)
Alarm Inputs	—	4 contact input N/O or N/C	4 contact input N/O or N/C	16 contact input N/O or N/C	16 contact input N/O or N/C
Alarm Outputs	—	1	1	9	9
Power over Ethernet	4 independent 10, 100 Mbps PoE Ethernet interfaces	—	16 independent 10, 100 Mbps PoE Ethernet interfaces	16 independent 10, 100 Mbps PoE Ethernet interfaces	—
Chassis	—	—	—	19-inch rack-mounted, 1.5U	19-inch rack-mounted, 1.5U
Supply Voltage	48 VDC, Power Adapter 100 ~ 240 VAC 50, 60Hz included	100 ~ 240 VAC, 50Hz / 60Hz	100 ~ 240 VAC, 50Hz / 60Hz	100 ~ 240 VAC, 50Hz / 60Hz	100 ~ 240 VAC, 50Hz / 60Hz
Power Consumption	≤ 10 W without harddisk and PoE off	≤ 15 W without harddisk	≤ 15 W without harddisk and PoE off	≤ 30W without hard disks	≤ 30W without hard disks





GD-RN-DT8864N



GD-RN-AT819128N

	Premium	Premium
IP Inputs	64 channels	128 channels
Recording Bandwidth	400Mbps	576 Mbps
Outgoing Bandwidth	400 Mbps	512 Mbps
Recording Resolution	Max. 32 MP	Max. 12 MP
Video Compression	H.264, H.264+, H.265, H.265+	H.264, H.264+, H.265, H.265+, MPEG4
Recording Mode	Continuous, Event Alarm, Motion, Video Loss, Schedule	Continuous, Event Alarm, Motion, Video Loss, Schedule
Search Mode	Date, Time, Event Alarm, Motion, Search Backup	Date, Time, Event Alarm, Motion, Search Backup
External Backup	USB HDD, USB Memory, USB DVD-R, Network	USB HDD, USB Memory, USB DVD-R, Network
HDMI Output	HDMI1: 8K (7680 × 4320) HDMI2: 4K (3840 × 2160)	HDMI1: 4K (3840 × 2160) HDMI2: 1920 × 1080p
Harddisk bay	8 x SATA III	16 x SATA III, 1 x e-SATA
Max. Storage Capacity	Up to 16TB capacity for each HDD	Up to 10TB capacity for each HDD
Audio Inputs	1-ch, RCA (2.0 Vp-p, 1kΩ)	1-ch, RCA (2.0 Vp-p, 1kΩ)
Alarm Inputs	16 contact input N/O or N/C	16 contact input N/O or N/C
Alarm Outputs	9	8
Power over Ethernet	—	—
Chassis	19-inch rack-mounted, 2U	19-inch rack-mounted, 3U
Supply Voltage	2 x 100 ~ 240 VAC, 50Hz / 60Hz redundant power supply	2 x 100 ~ 240 VAC, 50Hz / 60Hz redundant power supply
Power Consumption	≤ 50 W without harddisk	Max. 500 W, 140 W without harddisk

GRUNDIG ANALYTICS

Embedded video analytics and intelligence can greatly improve the efficiency of your security personnel and offer insights to improve operations.

Protect your premises and gain business intelligence into traffic patterns and trends. Count objects, cars or people entering and exiting a specific area to determine the proper staffing needed during peak traffic times. Automatically monitor areas where no objects or people are to be present and alert for instant action to be taken.



Scan QR Code
for video example

Line Crossing Detection. Cross a pre-defined virtual line.

Intrusion Detection. Enter and loiter in a pre-defined virtual region.

Region Entrance. Enter a pre-defined virtual region from the outside place.

Region Exiting. Exit from a pre-defined virtual region.

Object (People) Counting.

Unattended Baggage and Object Removal. Objects left over in the pre-defined region such as the baggage, purse, dangerous materials. Video verification and real-time alerts when objects have been placed or removed from a field of view.

Heat Map. Graphical representation of density of visit in a configured area. Easily identify traffic patterns and trends to improve product placement, promotional graphics and staffing.

Face Detection. Human face appears in the image can be detected and trigger linkage method.



GD-RX-AP1416R

GD-RX-AP2424R

GD-RX-AP2432R

GD-RX-AP3448R

GD-RX-AP3464R

GD-RX-AP2496R

	Professional	Professional	Professional	Professional	Professional	Professional
Number of cameras	16 channel (extendable with CAM licences)	24 channel (extendable with CAM licences)	32 channel (extendable with CAM licences)	48 channel (extendable with CAM licences)	64 channel (extendable with CAM licences)	96 channel (extendable with CAM licences)
Operating System	Microsoft® Windows 11 Pro 64-bit	Microsoft® Windows 11 Pro 64-bit	Microsoft® Windows 11 Pro 64-bit	Microsoft® Windows 11 Pro 64-bit	Microsoft® Windows 11 Pro 64-bit	Microsoft® Windows 11 Pro 64-bit
CPU	Intel® Core™ i5-13400, 10 Cores, 16 Threads, 20 MB Cache, 2.50 GHz Base Frequency, 4.60 GHz Turbo Frequency	Intel® Core™ i5-13400, 10 Cores, 16 Threads, 20 MB Cache, 2.50 GHz Base Frequency, 4.60 GHz Turbo Frequency	Intel® Core™ i5-13400, 10 Cores, 16 Threads, 20 MB Cache, 2.50 GHz Base Frequency, 4.60 GHz Turbo Frequency	Intel® Core™ i5-14400, 10 Cores, 16 Threads, 20 MB Cache, 2.50 GHz Base Frequency, 4.70 GHz Turbo Frequency	Intel® Core™ i5-14400, 10 Cores, 16 Threads, 20 MB Cache, 2.50 GHz Base Frequency, 4.70 GHz Turbo Frequency	Intel® Core™ i5-14400, 10 Cores, 16 Threads, 20 MB Cache, 2.50 GHz Base Frequency, 4.70 GHz Turbo Frequency
Video Compression	H.264, H.264+, H.265, H.265+, MJPEG	H.264, H.264+, H.265, H.265+, MJPEG	H.264, H.264+, H.265, H.265+, MJPEG	H.264, H.264+, H.265, H.265+, MJPEG	H.264, H.264+, H.265, H.265+, MJPEG	H.264, H.264+, H.265, H.265+, MJPEG
Harddisk bay	6x SATA	6x SATA	6x SATA	6x SATA	6x SATA	6x SATA
Supply Voltage	100 ~ 240 VAC, 50Hz / 60Hz	100 ~ 240 VAC, 50Hz / 60Hz	100 ~ 240 VAC, 50Hz / 60Hz	100 ~ 240 VAC, 50Hz / 60Hz	100 ~ 240 VAC, 50Hz / 60Hz	100 ~ 240 VAC, 50Hz / 60Hz
Power Consumption	Max. 400 W	Max. 400 W	Max. 400 W	Max. 400 W	Max. 400 W	Max. 400 W

C·WERK®

The GRUNDIG Security Video Management System powered by C-WERK® is the advanced solution for video security systems in virtually all areas of application. C-WERK® sets new standards, especially with its simple and user-friendly operation. Regardless of the requirements, C-WERK® can cope effectively with almost any challenge: with logical, systematic, and especially user-friendly implementation. The C-WERK® platform is completely scalable and modular, and it features open system architecture. The simple license model enables individual solutions: you'll only pay for what you need.

The GRUNDIG VMS powered by C-WERK® is based on an end-to-end concept with a unified software solution throughout: ranging from IP camera / recorder freeware to a video management solution for extensive, complex video facilities.

Scan the QR codes to start videos.

For more information please check <https://grundig-security.com/technology/c-werk/>



TIME LAPSE

Time Lapse is a tool that allows the user to display all moving actions of a predetermined period in a single video. This significantly reduces the effort of finding a particular scene.

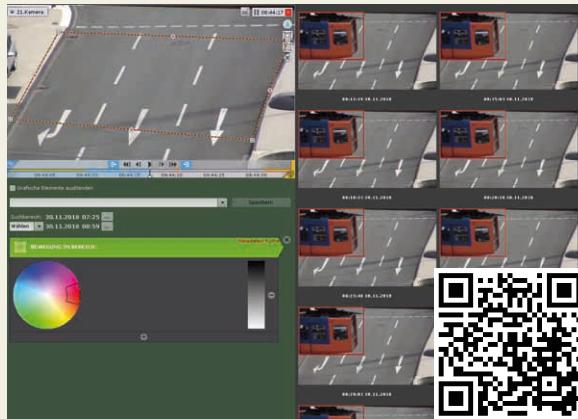


BEHAVIOUR ANALYTICS

The intelligent Behaviour Analytics of C-WERK® recognizes potentially dangerous situations by detecting specific human postures. The software identifies the positions of the body parts to detect the pose. This will improve the security for example schools, airports, banks, commercial spaces, or office buildings.

SOME IMPORTANT FEATURES OF C-WERK® VIDEO MANAGEMENT SOLUTIONS

Forensic Search is an impressive tool that searches for certain scenes or objects about self-determined properties such as object size, color, speed and direction. It is also possible to search specifically for people or vehicles.



SIMILARITY SEARCH

The analysis function extracts human attributes such as colour and type of clothing, shoes and headwear, and stores them in a database. Search results display people with similar attributes (e.g. red shirt) from the video footage of several cameras and from archived material.



FACE SEARCH



Face Search allows recognizing and identifying faces. In addition, it is possible to compare the recognized face with an already existing photo to carry out further automated actions.

LPR SEARCH



License Plate Recognition allows system operators to identify, track and analyse vehicles at entry and exit points. Automatically capture license plates in both, stop & go and moving traffic to review later or automatically open barriers or denies access removing the need of a dedicated LPR operator.

PROFESSIONAL

The professional solution covering most applications for advanced video systems

PREMIUM

Designed for comprehensive solutions with special, unique performance characteristics

ULTRA

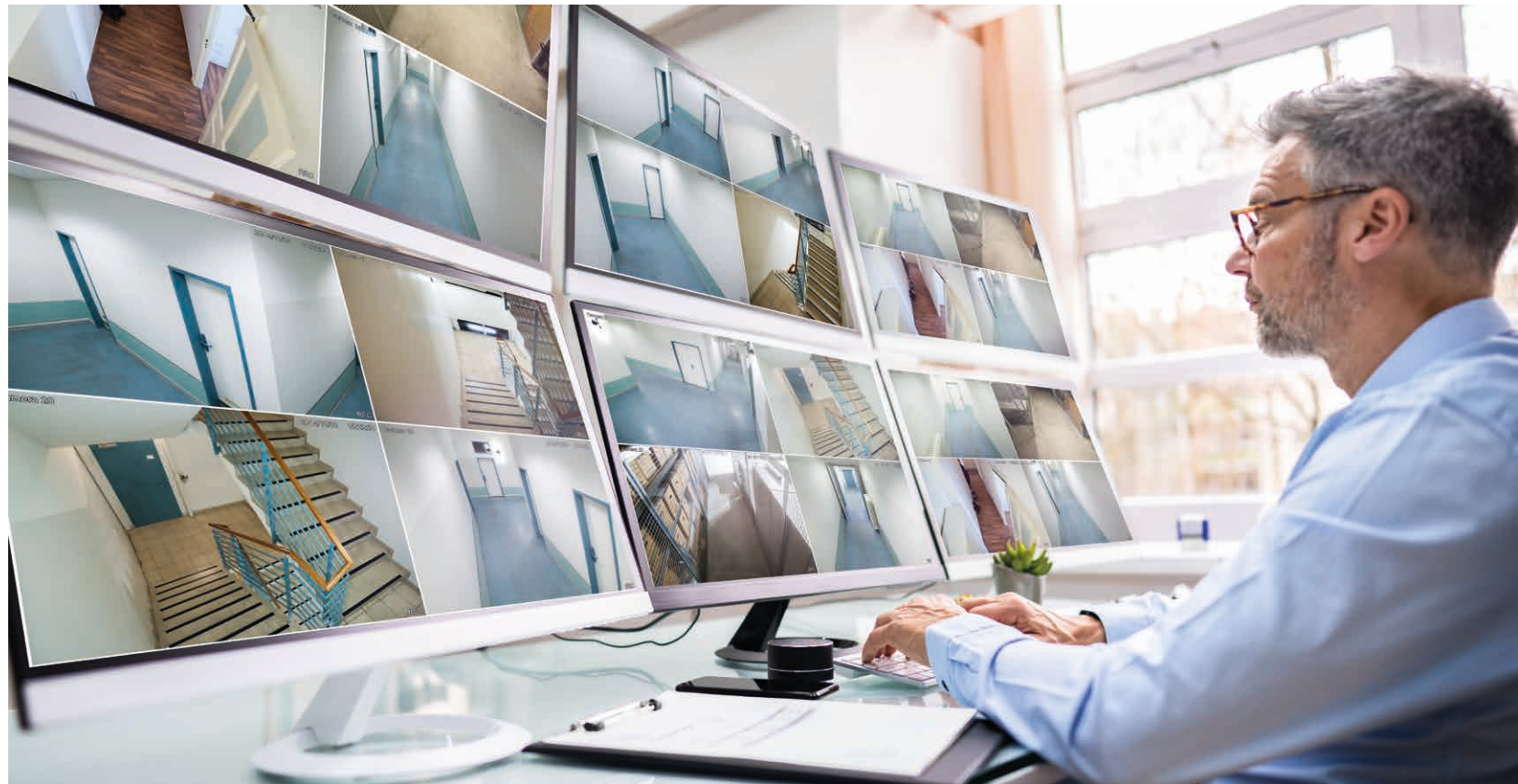
The large scale solution for an unlimited number of server connections, includes offline analytics

Open Platform VMS by C-WERK®

C-WERK® is best-in-class, new-generation Video Management Software that is based on open standards to offer a truly open platform. C-WERK®'s reliability, performance, and convenience are unmatched on the market. Experience unprecedented flexibility and freedom of configuration: unlimited number of video servers, video cameras, workstations and mobile client devices, and more than 10.000 IP devices are all supported. Thanks to the program's application programming interface (API), C-WERK® allows easily integrating third-party hardware to extend your video system's functionality yet further. The advanced ergonomic interface makes all functions intuitively easy to use and find. A transparent customer-oriented pricing policy means that you can take advantage of the program's full functionality, no matter the size of your system.

C-WERK® Highlights

- Unlimited number of cameras, servers and remote clients
- Support for more than 10.000 IP devices
- Advanced video analytics with AI detection
- Unique tools for fast video footage retrieval
- Flat pricing — easy to budget and save
- Zero maintenance fees
- Similarity search function
- Free viewer software with C-WERK® VIEWER



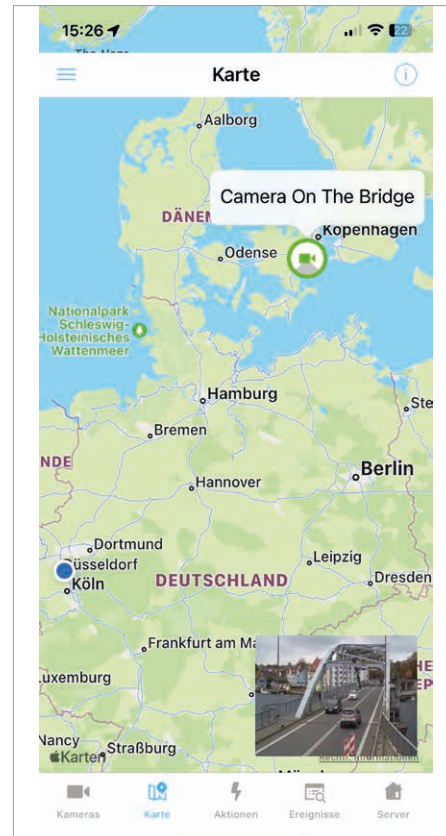
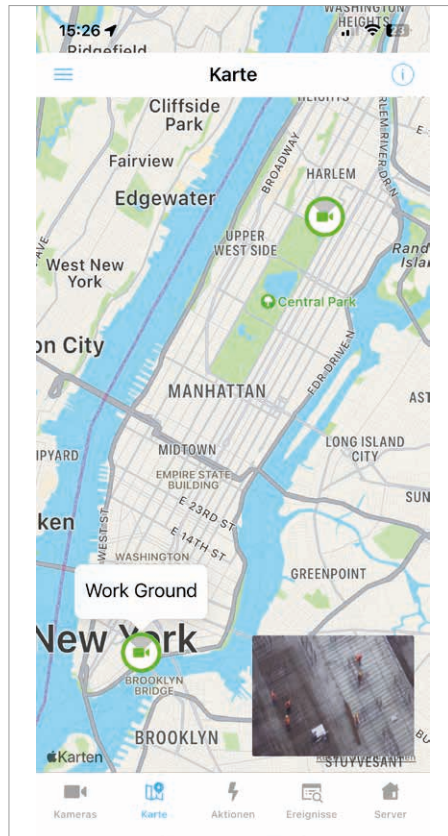


C-WERK® mobile App

The client app allows connecting to C-WERK® servers from mobile devices. The app supports receiving live video & audio from cameras, playback of recorded videos, controlling PTZ cameras, receiving push notifications about events in the system and many more functions.

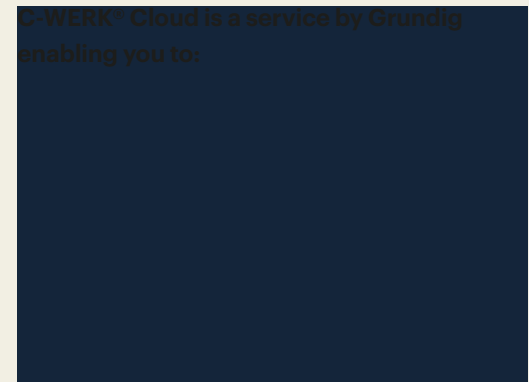


The C-WERK® App is available for iOS and Android.



C-WERK® Cloud

C-WERK® Cloud is a service by Grundig enabling you to:



C-WERK® Licenses

ITEM CODE	DESCRIPTION	PRODUCT LINE
Camera License		
GD-CW-AP-CAM	C-WERK® Pro Single-Channel Camera License	PROFESSIONAL
GD-CW-AT-CAM	C-WERK® Premium Single-Channel Camera License	PREMIUM
GD-CW-AU-CAM	C-WERK® Ultra Single-Channel Camera License	ULTRA
Extension License		
GD-CW-AP-SRC	C-WERK® Pro Source License	PROFESSIONAL
GD-CW-AT-SRC	C-WERK® Premium Source License	PREMIUM
GD-CW-AU-SRC	C-WERK® Ultra Source License	ULTRA
GD-CW-AP-IFS	C-WERK® Pro Forensic Search License	PROFESSIONAL
Upgrade		
GD-CW-AP-CAM-PLUS	C-WERK® Essential to Professional Camera License Upgrade	PROFESSIONAL
GD-CW-AT-CAM-PLUS	C-WERK® Professional to Premium Camera License Upgrade	PREMIUM
GD-CW-AU-CAM-PLUS	C-WERK® Premium to Ultra Camera License Upgrade	ULTRA
Additional modules		
GD-CW-AP-LPS	C-WERK® Pro License Realtime License Plate Recognition slow	PROFESSIONAL
GD-CW-AP-LPF	C-WERK® Pro License Realtime License Plate Recognition fast	PROFESSIONAL
GD-CW-AP-FRT	C-WERK® Pro License Realtime Face Recognition for 1 Video Channel	PROFESSIONAL
GD-CW-AP-FRT10	C-WERK® Pro License Realtime Face Recognition for 10 Video Channels	PROFESSIONAL
GD-CW-AP-HBA	C-WERK® Pro License Realtime Behavior Analytics	PROFESSIONAL
GD-CW-AP-PPE	C-WERK® Pro License Personal Protective Equipment Recognition for 1 Camera	PROFESSIONAL
GD-CW-AP-WLDE	C-WERK® Pro License Water Level Recognition for 1 Camera	PROFESSIONAL







ITEM CODE	DESCRIPTION	PRODUCT LINE
GD-CW-AT-LPS	C-WERK® Premium License Realtime License Plate Recognition slow	PREMIUM
GD-CW-AT-LPF	C-WERK® Premium License Realtime License Plate Recognition fast	PREMIUM
GD-CW-AT-FRT	C-WERK® Premium License Realtime Face Recognition for 1 Video Channel	PREMIUM
GD-CW-AT-FRT10	C-WERK® Premium License Realtime Face Recognition for 10 Video Channels	PREMIUM
GD-CW-AT-HBA	C-WERK® Premium License Realtime Behavior Analytics	PREMIUM
GD-CW-AT-PPE	C-WERK® Premium License Personal Protective Equipment Recognition	PREMIUM
GD-CW-AT-WLD	C-WERK® Premium License Water Level Recognition for 1 Camera	PREMIUM
GD-CW-AT-SIM	C-WERK® Premium License Similarity Search for 1 Camera	PREMIUM
GD-CW-AT-OFS	C-WERK® Premium Offline Forensic Search License	PREMIUM
GD-CW-AU-LPS	C-WERK® Ultra License Realtime License Plate Recognition slow	ULTRA
GD-CW-AU-LPF	C-WERK® Ultra License Realtime License Plate Recognition fast	ULTRA
GD-CW-AU-FRT	C-WERK® Ultra License Realtime Face Recognition for 1 Video Channel	ULTRA
GD-CW-AU-FRT10	C-WERK® Ultra License Realtime Face Recognition for 10 Video Channels	ULTRA
GD-CW-AU-HBA	C-WERK® Ultra License Realtime Behavior Analytics	ULTRA
GD-CW-AU-PPE	C-WERK® Ultra License Personal Protective Equipment Recognition	ULTRA
GD-CW-AU-WLD	C-WERK® Ultra License Water Level Recognition for 1 Camera	ULTRA

Content of License Packages



FUNCTION	PROFESSIONAL	PREMIUM	ULTRA
Number of Cameras	unlimited	unlimited	unlimited
Number of Servers	30	30	unlimited
Thumbnail search	✓	✓	✓
Alarm search	✓	✓	✓
Bookmarking (with text search)	✓	✓	✓
3D Maps	✓	✓	✓
Web browser client	✓	✓	✓
IOS & Android Apps	✓	✓	✓
C-WERK® Cloud Service	✓	✓	✓
Fisheye Dewarping	✓	✓	✓
Edge Analytics (camera metadata)	✓	✓	✓
Blue Stream (Bandwidth Management)	✓	✓	✓
H.265	✓	✓	✓
ONVIF profile G, M, S, T	✓	✓	✓
Edge Storage (Read only from SD-card or HDD)	✓	✓	✓
Event Makros	✓	✓	✓
Free Software Updates	✓	✓	✓
Cross System Client	✓	✓	✓
Time Lapse	✓	✓	✓
Data replication	—	✓	✓
Video Wall	—	✓	✓
LDAP Service	—	✓	✓
Edge Storage copy	—	✓	✓
Failover	—	✓	✓

FUNCTION	PROFESSIONAL	PREMIUM	ULTRA
Real-time Analysis (Object Tracker)	✓	✓	✓
C-WERK® Data Reports	✓	✓	✓
Face Recognition	optional (GD-CW-AP-IFS)	✓	✓
Face Mask Detection	optional (GD-CW-AP-IFS)	✓	✓
LPR Detection	optional (GD-CW-AP-IFS)	✓	✓
Fire Detection	optional (GD-CW-AP-IFS)	✓	✓
Smoke Detection	optional (GD-CW-AP-IFS)	✓	✓
AI Human/Vehicle Detection	optional (GD-CW-AP-IFS)	✓	✓
Retail Pack (Visitors Counter, Queue Detection, Heat Map)	optional (GD-CW-AP-IFS)	✓	✓
Forensic Search Function	optional (GD-CW-AP-IFS)	✓	✓
Tag & Track	optional (GD-CW-AP-IFS)	✓	✓
LPR Search	optional (GD-CW-AP-IFS)	✓	✓
Face search	optional (GD-CW-AP-IFS)	✓	✓
Multicamera Search	—	✓	✓
Similarity Search	—	optional (GD-CW-AP-SIM)	✓
Offline Analytics	optional (GD-CW-AT-OFS)	optional (GD-CW-AT-OFS)	✓
Realtime-LPR 6 fps	optional (GD-CW-AP-LPS)	optional (GD-CW-AT-LPS)	optional (GD-CW-AU-LPS)
Realtime-LPR 25 fps	optional (GD-CW-AP-LPF)	optional (GD-CW-AT-LPF)	optional (GD-CW-AU-LPF)
Realtime-Face Recognition	optional (GD-CW-AP-FRT)	optional (GD-CW-AT-FRT)	optional (GD-CW-AU-FRT)
Pose Detection	optional (GD-CW-AP-HBA)	optional (GD-CW-AT-HBA)	optional (GD-CW-AU-HBA)
Personal Protective Equipment	optional (GD-CW-AP-PPE)	optional (GD-CW-AT-PPE)	optional (GD-CW-AU-PPE)
Water Level Detection	optional (GD-CW-AP-WLD)	optional (GD-CW-AT-WLD)	optional (GD-CW-AU-WLD)
Neural Counter	—	optional (GD-CW-AT-AINC)	optional (GD-CW-AU-AINC)
Administration of external Events (Alarm I/O, POS, etc.)	optional (GD-CW-AP-SRC)	optional (GD-CW-AT-SRC)	optional (GD-CW-AU-SRC)

						
	GD-HW-APSV08R	GD-HW-APSV012R	GD-HW-APSV024R	GD-HW-BPSV04T	GD-HW-BPSV05T	GD-HW-BPSV06T
	Professional	Professional	Professional	Professional	Professional	Professional
CPU	Intel® Xeon® E-2224, 4 Cores, 4 Threads, 8 MB Cache, 3.4 GHz Base Frequency, 4.6 GHz Turbo Frequency	Intel® Xeon® E-2274G, 4 Cores, 8 Threads, 8 MB Cache, 4.0 GHz Base Frequency, 4.9 GHz Turbo Frequency	Intel® Xeon® E-2274G, 4 Cores, 8 Threads, 8 MB Cache, 4.0 GHz Base Frequency, 4.9 GHz Turbo Frequency	Intel® Core™ i5-9400, 6 Cores, 6 Threads, 9 MB Cache, 2.90 GHz Base Frequency, 4.10 GHz Turbo Frequency	Intel® Core™ i7-10700K, 8 Cores, 16 Threads, 16 MB Cache, 3.80 GHz Base Frequency, 5.10 GHz Turbo Frequency	Intel® Core™ i9-10900X, 10 Cores, 20 Threads, 19.25 MB Cache, 3.70 GHz Base Frequency, 4.50 GHz Turbo Frequency
Graphic Card	Onboard Graphics	Onboard Graphics	Onboard Graphics	NVIDIA Quadro P1000 PNY, 4 GB, GDDR5	NVIDIA Quadro P1000 PNY, 4 GB, GDDR5	NVIDIA Quadro P1000 PNY, 4 GB, GDDR5
Memory	16 GB	16 GB	16 GB	8 GB DDR4	8 GB DDR4	2x 8 GB DDR4
Operating System	Windows Server 2022 Essentials	Windows Server 2022 Essentials	Windows Server 2022 Essentials	Microsoft® Windows 10 64-bit	Microsoft® Windows 10 64-bit	Microsoft® Windows 10 64-bit
Network Interface	2x RJ45 Gbit LAN	2x RJ45 Gbit LAN	2x RJ45 Gbit LAN	1x RJ45 Gbit LAN	1x RJ45 Gbit LAN	2x RJ45 Gbit LAN
Operating Temperature	+5 °C ~ +40 °C (+41°F ~ + 104°F)	+5 °C ~ +40 °C (+41°F ~ + 104°F)	+5 °C ~ +40 °C (+41°F ~ + 104°F)	+5 °C ~ +40 °C (+41°F ~ + 104°F)	+5 °C ~ +40 °C (+41°F ~ + 104°F)	+5 °C ~ +40 °C (+41°F ~ + 104°F)
Supply Voltage	100 ~ 240 VAC, 50Hz / 60Hz	100 ~ 240 VAC, 50Hz / 60Hz	100 ~ 240 VAC, 50Hz / 60Hz	100 ~ 240 VAC, 50Hz / 60Hz	100 ~ 240 VAC, 50Hz / 60Hz	100 ~ 240 VAC, 50Hz / 60Hz
Power Consumption	600 W	2x 800W	2x 650 W	450 W	450 W	450 W



GD-HW-HDD-4TB	Professional	Server HDD 4TB Western Digital Purple
GD-HW-HDD-8TB	Professional	Server HDD 8TB Western Digital Purple
GD-HW-HDD-6TB	Professional	Server HDD 6TB Western Digital Purple
GD-HW-HDD-10TB	Professional	Server HDD 10TB Western Digital Purple
GD-HW-HDD-12TB	Professional	Server HDD 12TB Western Digital Purple
GD-HW-HDD-14TB	Professional	Server HDD 14TB Western Digital Purple
GD-HW-HDD-18TB	Professional	Server HDD 18TB Western Digital Purple
GD-HW-SD-128GB	Professional	Micro SD Card 126GB Western Digital Purple
GD-HW-SD-256GB	Professional	Micro SD Card 256GB Western Digital Purple



GD-HW-ACSW04D



GD-HW-ACSW08D



GD-HW-ACSW16R



GD-HW-ACSW24R

	Essential	Essential	Essential	Essential
Ports	1 x 10/100 Base-T Hi-PoE RJ45(Auto-MDI/MDI-X) 3 x 10/100 Base-T PoE RJ45(Auto-MDI/MDI-X) 2 x 10/100 RJ45 (Auto-MDI/MDI-X)	1 x 10/100 Base-T Hi-PoE RJ45(Auto-MDI/MDI-X) 7 x 10/100 Base-T PoE RJ45(Auto-MDI/MDI-X) 2 x 10/100/1000 RJ45 (Auto-MDI/MDI-X)	16 x 10/100/1000 Base-T PoE RJ45(Auto-MDI/MDI-X) 2 Gigabit SFP fiber optical ports	24 x 10/100/1000 Base-T PoE RJ45(Auto-MDI/MDI-X) 2 Gigabit SFP fiber optical ports
PoE Specification	"Port 1: 802.3af/at, 802.3bt Port 2 to 4: 802.3af/at"	"Port 1: 802.3af/at, 802.3bt Port 2 to 8: 802.3af/at"	802.3af/at (PSE)	802.3af/at (PSE)
Switching Method	Store and Forward	Store and Forward	Store and Forward	Store and Forward
Switch Throughput	1.2 Gbps	5.6 Gbps	36 Gbps	52 Gbps
MAC Address Table	2K	16K	8K	8K
ISO Standard	IEEE 802.3, IEEE 802.3u, IEEE 802.3x	IEEE 802.3, IEEE 802.3u, IEEE 802.3x, IEEE 802.3ab, IEEE 802.3z	IEEE 802.3, IEEE 802.3u, IEEE 802.3x	IEEE 802.3, IEEE 802.3u, IEEE 802.3x, IEEE 802.3ab, IEEE 802.3z
PoE Budget	60 W	110 W	125 W	225 W
Max power Output per Port	Port 1: 60 watts max Port 2 to 4: 30 watts max	Port 1: 90 watts max Port 2 to 8: 30 watts max	54V DC, 30 watts max	54V DC, 30 watts max
Fan	Fanless	Fanless	Fanless	Temperature-controlled
Material	Metal	Metal	Metal	Metal
Operating Temperature	-10°C ~ +55°C (+14°F ~ + 131°F)	-10°C ~ +55°C (+14°F ~ + 131°F)	-10°C ~ +55°C (+14°F ~ + 131°F)	-10°C ~ +55°C (+14°F ~ + 131°F)
Supply Voltage	48 VDC, Power Adapter 100 ~ 240 VAC 50, 60Hz included	48 VDC, Power Adapter 100 ~ 240 VAC 50, 60Hz included	100 ~ 240 VAC, 50Hz / 60Hz	100 ~ 240 VAC, 50Hz / 60Hz
Power Consumption	Max. power consumption 65W Power consumption in idle 5W	Max. power consumption 120W Power consumption in idle 10W	Max. power consumption 150W Power consumption in idle 25W	Max. power consumption 250W Power consumption in idle 25W



GD-CT-AC2105B



GD-CT-AC2113E



GD-CT-AP2117E



GD-CT-CC2126V

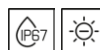


GD-CT-DP2837V



GD-CT-AP5826V

	Essential	Essential	Professional	Essential	Professional	Professional
Image Sensor	2 Megapixel progressive scan CMOS	2 Megapixel progressive scan CMOS	2 Megapixel progressive scan CMOS	2 Megapixel progressive scan CMOS	2 Megapixel progressive scan CMOS	5 Megapixel progressive scan CMOS
Pixels-Effective	1920 (H) x 1080 (V)	1984 (H) x 1105 (V)	1920 (H) x 1080 (V)	1920 (H) x 1080 (V)	1920 (H) x 1080 (V)	2560 (H) x 1944 (V)
Sensitivity Colour	0.005 Lux @ F1.2 (AGC ON)	0.01 Lux @ F1.2 (AGC ON)	0.005 Lux @ F1.2	0.01 Lux @ F1.2 (AGC ON)	0.0005 Lux @ F1.28 (AGC ON)	0.008 Lux @ F1.2 (AGC ON)
Sensitivity B/W	—	0 Lux LED IR on	0 Lux LED IR on	0 Lux LED IR on	0 Lux LED IR on	0 Lux LED IR on
Lens Focal Length	—	2.8 mm	2.8 mm	2.7 ~ 13.5 mm	2.8 ~ 12 mm motorized	2.8 ~ 12 mm motorized
Col/B&W	Auto (Electronic), Color, B&W	Auto, Color, B&W, IR-cut filter removable (ICR)	Auto, Color, B&W, IR-cut filter removable (ICR)	Auto, Color, B&W, IR-cut filter removable (ICR)	Auto, Color, B&W, IR-cut filter removable (ICR)	Auto, IR-cut filter removable (ICR)
Wide Dynamic Range	120 dB	Digital WDR	130 dB	Digital WDR	130 dB	Digital WDR
Image Enhancement	BLC, 3D DNR, Mirror, AGC, WDR, Defect Pixel Correction	BLC, 2D DNR, Anti-Flicker, Mirror, AGC	BLC, 3D DNR, Anti-Flicker, Mirror, AGC, WDR, Brightness, Sharpness, Smart-IR	BLC, 2D DNR, AGC, HLC, Global	BLC, 3D DNR, HLC, Anti-Banding, HLS, AGC, Brightness, Sharpness, Smart-IR	BLC, 2D DNR, Anti-Flicker, Mirror, AGC
Max. IR Distance	—	Up to 20 m	Up to 20 m	Up to 40 m	Up to 60 m	Up to 30 m
Video Outputs	1x HD-TVI (BNC) , 1x Composite 1.0Vp-p 75 OHM (BNC)	1x HD-TVI (BNC)	1x HD-TVI (BNC)	4 in 1 Switch between TVI, AHD, CVI and CVBS	1x HD-TVI (BNC)	1x HD-TVI (BNC)
Regulation	CE, FCC, RoHS Compliant	CE, FCC, RoHS Compliant	CE, FCC, RoHS Compliant	CE, FCC, RoHS Compliant	CE, FCC, RoHS Compliant	CE, FCC, RoHS Compliant
Operating Temperature	-30 °C ~ 60 °C (-22 °F ~ 140 °F)	-40 °C ~ 60 °C (-40 °F ~ 140 °F)	-40 °C ~ 60 °C (-40 °F ~ 140 °F)	-40 °C ~ 60 °C (-40 °F ~ 140 °F)	-40 °C ~ 60 °C (-40 °F ~ 140 °F)	-40 °C ~ 60 °C (-40 °F ~ 140 °F)
Supply Voltage	12 VDC ±10%	12 VDC ±10%	12 VDC ±10%	12 VDC ±10%	12 VDC ±15%, PoC.at	12 VDC ±15%, PoC.af
Power Consumption	Max. 4 W	Max. 4 W	Max. 4.5 W	Max. 5 W	Max. 7,5 W	Max. 8 W



**GD-CT-BC2116T****GD-CT-BC2126T****GD-CT-CP2837T****GD-CT-BP2247P**

	Essential	Essential	Professional	Professional
Image Sensor	2 Megapixel progressive scan CMOS	2 Megapixel progressive scan CMOS	2 Megapixel progressive scan CMOS	2 Megapixel progressive scan CMOS
Pixels-Effective	1920 (H) x 1080 (V)	1920 (H) x 1080 (V)	1920 (H) x 1080 (V)	1920 (H) x 1080 (V)
Sensitivity Colour	0.01 Lux @ F1.2 (AGC ON)	0.01 Lux @ F1.2 (AGC ON)	0.0005 Lux @ F1.28 (AGC ON)	0.005 Lux @ F1.6 (AGC ON)
Sensitivity B/W	0 Lux LED IR on	0 Lux LED IR on	0 Lux LED IR on	0 Lux LED IR on
Lens Focal Length	3.6 mm	2.7 ~ 13.5 mm	2.8 ~ 12 mm motorized	4.8 ~ 120 mm motorized, autofocus
Col/B&W	Auto, Color, B&W, IR-cut filter removable (ICR)	Auto, Color, B&W, IR-cut filter removable (ICR)	Auto, Color, B&W, IR-cut filter removable (ICR)	Auto, Color, B&W, IR-cut filter removable (ICR)
Wide Dynamic Range	Digital WDR	Digital WDR	130 dB	120 dB
Image Enhancement	BLC, 2D DNR, Anti-Flicker, Mirror, AGC	BLC, 2D DNR, AGC, HLC, Global	BLC, 3D DNR, HLC, Anti-Flicker, Mirror, AGC, Brightness, Sharpness, Smart-IR	BLC, 3D DNR, EIS, HLC
Max. IR Distance	Up to 20 m	Up to 40 m	Up to 60 m	Up to 150m
Video Outputs	1x HD-TVI (BNC)	4 in 1 Switch between TVI, AHD, CVI and CVBS	1x HD-TVI (BNC) , 1x Composite 1.0Vp-p 75 OHM (BNC) WDR off	Switchable TVI/AHD/CVI/CVBS video output, (NTSC or PAL composite, BNC)
Regulation	CE, FCC, RoHS Compliant	CE, FCC, RoHS Compliant	CE, FCC, RoHS Compliant	CE, FCC, RoHS Compliant
Operating Temperature	-40 °C ~ 60 °C (-40 °F ~ 140 °F)	-40 °C ~ 60 °C (-40 °F ~ 140 °F)	-40 °C ~ 60 °C (-40 °F ~ 140 °F)	-40 °C ~ 65 °C (-40 °F ~ 149 °F)
Supply Voltage	12 VDC ±10%	12 VDC ±10%	12 VDC ±15%, PoC.at	24 VAC, 50, 60Hz
Power Consumption	Max. 4 W	Max. 5 W	Max. 8 W	Max. 30 W





GD-RT-BC3004N

GD-RT-BC3008N

GD-RT-BC3016N

GD-RT-AP5004P

GD-RT-AP8008P

	Essential	Essential	Essential	Professional	Professional
Video Inputs	4-ch, BNC	8-ch, BNC	16-ch, BNC	4-ch, BNC	8-ch, BNC, supporting PoC
HD-TVI Input	4MP, 3 MP, 1080p30, 1080p25	3 MP, 1080p30	3 MP, 1080p30	8 MP, 5 MP, 4 MP, 3 MP, 1080p30	8 MP, 5 MP, 4 MP, 3 MP, 1080p30
AHD Input	4 MP, 1080p25, 1080p30	4 MP, 1080p25, 1080p30	4 MP, 1080p25, 1080p30	5 MP, 4 MP, 1080p30	5 MP, 4 MP, 1080p30
CVI Input	4 MP, 1080p30	4 MP, 1080p30	4 MP, 1080p30	4 MP, 1080p30	4 MP, 1080p30
CVBS Input	PAL, NTSC	PAL, NTSC	PAL, NTSC	PAL, NTSC	PAL, NTSC
IP Inputs	5 (6 IP enhance mode)	4 (12 IP enhance mode)	18 (24 IP enhance mode)	6 (8 IP enhance mode)	12 (16 IP enhance mode)
Recording Resolution	4 MP, 3 MP, 1080p, 720p, WD1, 4CIF (when 1080P lite not enabled)	4 MP, 3 MP, 1080p, 720p, WD1, 4CIF (when 1080P lite not enabled)	4 MP, 3 MP, 1080p, 720p, WD1, 4CIF (when 1080P lite not enabled)	8 MP, 5 MP, 4 MP, 3 MP, 1080p, 720p, WD1, 4CIF, VGA, CIF	8 MP, 5 MP, 4 MP, 3 MP, 1080p, 720p, WD1, 4CIF, VGA, CIF
Video Compression	H.264, H.264+, H.265, H.265pro, H.265pro+	H.264, H.264+, H.265, H.265pro, H.265pro+	H.264, H.264+, H.265, H.265pro, H.265pro+	H.264, H.264+, H.265, H.265pro, H.265pro+	H.264, H.264+, H.265, H.265pro, H.265pro+
Recording Mode	Continuous, Event Alarm, Motion, Video Loss, Schedule	Continuous, Event Alarm, Motion, Video Loss, Schedule	Continuous, Event Alarm, Motion, Video Loss, Schedule	Continuous, Event Alarm, Motion, Video Loss, Schedule	Continuous, Event Alarm, Motion, Video Loss, Schedule
Search Mode	Date, Time, Event Alarm, Motion, Search Backup, Quick search by object or event type	Date, Time, Event Alarm, Motion, Search Backup, Quick search by object or event type	Date, Time, Event Alarm, Motion, Search Backup, Quick search by object or event type	Date, Time, Event Alarm, Motion, Search Backup	Date, Time, Event Alarm, Motion, Search Backup
External Backup	USB HDD, USB Memory, USB DVD-R, Network	USB HDD, USB Memory, USB DVD-R, Network	USB HDD, USB Memory, USB DVD-R, Network	USB HDD, USB Memory, USB DVD-R, Network	USB HDD, USB Memory, USB DVD-R, Network
Motion Detection	On, Off, Area Setting	On, Off, Area Setting	On, Off, Area Setting	On, Off, Area Setting	On, Off, Area Setting
HDMI Output	1920×1080, 60Hz, 1280×1024, 60Hz, 1280×720, 60Hz, 1024×768, 60Hz	1920×1080, 60Hz, 1280×1024, 60Hz, 1280×720, 60Hz, 1024×768, 60Hz	1920×1080, 60Hz, 1280×1024, 60Hz, 1280×720, 60Hz, 1024×768, 60Hz	1920×1080, 60Hz, 1280×1024, 60Hz, 1280×720, 60Hz, 1024×768, 60Hz	4K (3840 × 2160)/30Hz
Harddisk bay	1 x SATA III	1 x SATA III	1 x SATA III	1 x SATA III	2 x SATA III
Max. Storage Capacity	Up to 10TB capacity for each HDD	Up to 10TB capacity for each HDD	Up to 10TB capacity for each HDD	Up to 10TB capacity for each HDD (not mandatory)	Up to 10TB capacity for each HDD
PoC Interface	—	—	—	4-ch	8-ch
Alarm Inputs	—	—	—	4 contact input N/ O or N/ C	8 contact input N/ O or N/ C
Alarm Outputs	—	—	—	1	4
Supply Voltage	12 VDC, Power Adapter 100 ~ 240 VAC 50, 60Hz included	12 VDC, Power Adapter 100 ~ 240 VAC 50, 60Hz included	12 VDC, Power Adapter 100 ~ 240 VAC 50, 60Hz included	48 VDC, Power Adapter 100 ~ 240 VAC 50, 60Hz included	48 VDC, Power Adapter 100 ~ 240 VAC 50, 60Hz included
Power Consumption	≤ 18 W without harddisk	≤ 18 W without harddisk	≤ 24W without hard disks	≤ 40 W without harddisk	≤ 60 W without hard disk, PoC

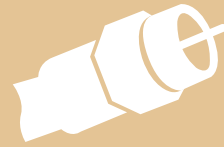




GD-RT-AP8016P

GD-RT-AT8016N

	Professional	Premium
Video Inputs	16-ch, supporting PoC	16-ch, BNC
HD-TVI Input	8 MP, 5 MP, 4 MP, 3 MP, 1080p30	8 MP, 5 MP, 4 MP, 3 MP, 1080p30
AHD Input	5 MP, 4 MP, 1080p30	5 MP, 4 MP, 1080p30
CVI Input	4 MP, 1080p30	4 MP, 1080p30
CVBS Input	PAL, NTSC	PAL, NTSC
IP Inputs	24 (32 IP enhance mode)	18, up to 8 MP
Recording Resolution	8 MP, 5 MP, 4 MP, 3 MP, 1080p, 720p, WD1, 4CIF, VGA, CIF	8 MP, 5 MP, 4 MP, 3 MP, 1080p, 720p, WD1, 4CIF, VGA, CIF
Video Compression	H.264, H.264+, H.265, H.265pro, H.265pro+	H.264, H.264+, H.265, H.265pro, H.265pro+
Recording Mode	Continuous, Event Alarm, Motion, Video Loss, Schedule	Continuous, Event Alarm, Motion, Video Loss, Schedule
Search Mode	Date, Time, Event Alarm, Motion, Search Backup	Date, Time, Event Alarm, Motion, Search Backup
External Backup	USB HDD, USB Memory, USB DVD-R, Network	USB HDD, USB Memory, USB DVD-R, Network, eSATA
Motion Detection	On, Off, Area Setting	On, Off, Area Setting
HDMI Output	4K (3840 × 2160)/30Hz	HDMI1 & VGA: 1920 × 1080, 60Hz HDMI2: 4K (3840 × 2160)
Harddisk bay	2 x SATA III	4 x SATA III, 1 x eSATA
Max. Storage Capacity	Up to 10TB capacity for each HDD	Up to 10TB capacity for each HDD
PoC Interface	16-ch	—
Alarm Inputs	4 contact input N/ O or N/ C	16 contact input N/ O or N/ C
Alarm Outputs	1	4
Supply Voltage	100 ~ 240 VAC, 50Hz / 60Hz	100 ~ 240 VAC, 50Hz / 60Hz
Power Consumption	≤ 140 W without hard disk , PoC	≤ 65W without hard disks



PoC

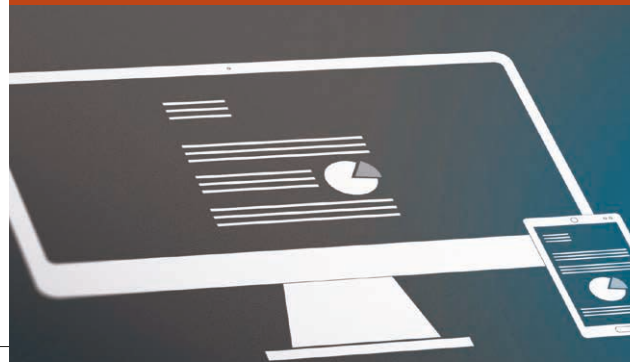
POWER OVER COAXIAL (POC)

With the Power over Coaxial (PoC) option the camera can be powered by the DVR via coaxial video cable. This makes the usage of separate cables and power supplies needless which would otherwise be needed to power your cameras. For installers this means a much more time and cost-efficient installation.

PoC can be used on cable runs up to 800 meters for a 5 MP-camera (depending on cable type) and is available in 4, 8 and 16 channel DVRs (models ending with -P). A full complement of GRUNDIG TVI PoC-cameras is also available which together offer a cost effective and time saving solution to your TVI installations.

MIGRATION FROM ANALOGUE COAXIAL CABLE TO IP SOLUTIONS

GRUNDIG offers the most efficient and cost-effective upgrade from existing video security systems to high-resolution technology solutions. Depending on the existing cable and technology in place, with GRUNDIG you can upgrade your system using high-resolution cameras, display and recording. With high-definition TVI-cameras you can replace analogue standard-resolution cameras by high-resolution cameras and can upgrade from your existing embedded system to a TVI embedded recorder — which enhances your equipment from a 0.5 to a 5 Megapixel resolution system.



GRUNDIG embedded recorders are ONVIF profile G compatible and can be managed by the GRUNDIG Video Management System or by any other third-party VMS.

GRUNDIG HD-TVI recorders operate with all common analogue standards such as CVBS, 960H, CVI, AHD and of course HD-TVI — up to 8 Megapixel resolution. And even more: In addition, IP camera channels are available to mix all front-end technologies on site.

**GD-ML-AP1031SD****GD-ML-DP2230HD****GD-ML-DP2430HD****GD-ML-DP2730HD**

	Professional	Professional	Professional	Professional
LCD Panel size	25.6 cm (10.1") Diagonal AM-TFT LED Backlight	54.6 cm (21, 5") Diagonal AM-TFT LED Backlight	59.9 cm (23.6") Diagonal AM-TFT LED Backlight	68.5 cm (27") Diagonal AM-TFT LED Backlight
Pixels-Total	1280 (H) x 800 (V)	1920 (H) x 1080 (V)	1920 (H) x 1080 (V)	1920 (H) x 1080 (V)
Pixel Pitch	0.192 mm (H) x 0.192 mm (V)	0.248 mm (H) x 0.248 mm (V)	0.248 mm (H) x 0.248 mm (V)	0.248 mm (H) x 0.248 mm (V)
Aspect Ratio	16 : 9	16 : 9	16 : 9	16 : 9
Video Standard	PAL, NTSC	PAL, NTSC	PAL, NTSC	PAL, NTSC
Video Inputs	1x Composite, BNC looped, 1x VGA, 1x HDMI	1x HDMI, 1x VGA, 1x USB	1x HDMI, 1x VGA, 1x USB	1x HDMI, 1x VGA, 1x USB
Brightness	350 cd, m ²	300 cd, m ²	300 cd, m ²	300 cd, m ²
Contrast Ratio	800:1	1000:1	1000:1	1000:1
Number of Colours	262K	16.7 million	16.7 million	16.7 million
Viewing Angle	160° (H) ~ 160° (V)	170° (H) ~ 160° (V)	170° (H) ~ 160° (V)	170° (H) ~ 160° (V)
Response Time	12 ms	5 ms	5 ms	5 ms
Display protection	Tempered acryl glass with anti-reflection coating	—	—	—
Audio Inputs	1x 3.5mm jack (Line) , 1x HDMI	1-ch, RCA (2.0 Vp-p, 1kΩ)	1-ch, RCA (2.0 Vp-p, 1kΩ)	1-ch, RCA (2.0 Vp-p, 1kΩ)
Speakers	yes	2 x 2 W	2 x 2 W	2 x 2 W
Vesa Mount	75 x 75 mm	75 x 75 mm	100 x 100 mm	75 x 75 mm
OSD (On Screen Display)	Yes, multi language	Yes, multi language	Yes, multi language	Yes, multi language
Accessories included	Stand, power adapter, HDMI cable and remote control	Power Adapter and HDMI cable	Power Adapter and HDMI cable	Power Adapter and HDMI cable
Regulation	CE, FCC, RoHS Compliant	CE, FCC, RoHS Compliant	CE, FCC, RoHS Compliant	CE, FCC, RoHS Compliant
Power Consumption	Max. 12 W	Max. 21 W	Max. 21 W	Max. 21 W
Supply Voltage	12 VDC, Power Adapter 100 ~ 240 VAC 50, 60Hz included	12 VDC, Power Adapter 100 ~ 240 VAC 50, 60Hz included	12 VDC, Power Adapter 100 ~ 240 VAC 50, 60Hz included	12 VDC, Power Adapter 100 ~ 240 VAC 50, 60Hz included



GD-ML-BP3230HD



GD-ML-BP5540UHD

	Professional	Professional
LCD Panel size	81,3 cm (32") Diagonal AM-TFT LED Backlight	140 cm (55") Diagonal AM-TFT LED Backlight
Pixels-Total	1920 (H) x 1080 (V)	3840 (H) x 2160 (V)
Pixel Pitch	0.36375 mm (H) x 0.36375 mm (V)	0.315 mm (H) x 0.315 mm (V)
Aspect Ratio	16 : 9	16 : 9
Video Standard	PAL, NTSC	PAL, NTSC
Video Inputs	1x FBAS, BNC, looped through, 1x VGA, 1x HDMI	1x Display Port, 3x HDMI
Brightness	300 cd, m ²	350 cd, m ²
Contrast Ratio	1000:1	4000:1
Number of Colours	16,7 million	1073 G
Viewing Angle	178° (H) ~ 178° (V)	178° (H) ~ 178° (V)
Response Time	5 ms	5 ms
Display protection	—	—
Audio Inputs	1 channel, RCA (2 Vpp, 1 kOhm)	—
Speakers	2 x 2,5 W	—
Vesa Mount	100 x 100 mm	400 x 400 mm
OSD (On Screen Display)	Yes, multi language	Yes, multi language
Accessories included	Stand, Power and HDMI cable, remote control	Power Adapter and HDMI cable, remote control
Regulation	CE, FCC, RoHS Compliant	CE, FCC, RoHS Compliant
Power Consumption	Max. 60 W	Max. 130 W
Supply Voltage	100 ~ 240 VAC, 50Hz / 60Hz	100 ~ 240 VAC, 50Hz / 60Hz



GD-KB-AC1420P



GD-KB-AP1420P



GD-KB-AT2430P

	Essential	Professional	Premium
LCD Panel size	—	6.5 cm (2.6") Diagonal AM-TFT LED Backlight	10.1" (25.6 cm) TFT LCD colour touch display, 1280 x 800
PTZ Control	3-axis joystick, PTZ-, focus- & iris-control, setting and calling Presets, Patterns & Patrols, Auto-Scan, Auto-Pan, Wiper, AUX	4-axis joystick, PTZ-, focus- & iris-control, setting and calling Presets, Patterns & Patrols, Auto-Scan, Auto-Pan, Wiper, AUX	4-axis joystick, PTZ-, focus- & iris-control, setting and calling Presets, Patterns & Patrols, Auto-Scan, Auto-Pan, Wiper, AUX
DVR Control	Play, Stop, Pause, FF, RW, Rec, Menu, Search, Backup, Monitors	Play, Stop, Pause, FF, RW, Rec, PTZ, Menu, Search, Backup, Monitors	Play, Stop, Pause, FF, RW, Rec, Menu, Search, Backup
Lens Control	Focus (Near, Far, Auto) , Zoom (Tele, Wide)	Iris (Close, Open) , Focus (Near, Far, Auto) , Zoom (Tele, Wide)	Iris (Close, Open) , Focus (Near, Far, Auto) , Zoom (Tele, Wide)
Operating System	Linux®	—	Android 6.0
Users	1 user, 1 level	Up to 16 users, 2 levels: Administrator and User	Up to 32 users, 2 levels: Administrator and User
Video Compression	—	—	H.264, H.265
Audio Input/Output	—	—	1-ch audio input and 1-ch audio output
Serial Interface(s)	USB 2.0, DirectX	1x RS-232, 1x RS-422, 1x RS-485	2x USB 2.0 (RS232/485 with adapter)
Network Interface	—	—	1x 10, 100, 1000 Base T, TX (RJ-45)
Suitable for	C-WERK® clients	NVR, DVR & PTZ-camera	NVR, DVR, PTZ-camera
Video Outputs	—	—	1x DVI, 1x HDMI
Operating Temperature	-10°C ~ 55°C	-10°C ~ 55°C	-10°C ~ 55°C
Supply Voltage	5 VDC by USB port	12 VDC	12 VDC, PoE (IEEE 802.3af)
Power Consumption	Max. 5 W	Max. 4.5 W	Max. 15.5 W



GD-CI-AC6614E



GD-BR-AJX04
Junction Box



GD-BR-AJX14
Junction Box



GD-BR-AMC03
Corner Mount Bracket



GD-BR-AMW14
Wall Mount Bracket



GD-CI-AP8617E



GD-BR-AJX17
Junction Box



GD-BR-AMC03
Wall Mount Bracket



GD-CI-CP4637E



GD-BR-AJX12
Junction Box



GD-BR-AMC01
Corner Mount Bracket



GD-BR-AML03
Pole Mount Bracket



GD-BR-AMP08
Pendant Mount Bracket



GD-BR-AMW04
Wall Mount Bracket



GD-BR-AWJ01
Wall Mount Bracket with Junction Box



GD-CI-CC4637V



GD-BR-AJX01
Junction Box



GD-BR-AMF01
Flush Mount Adapter



GD-BR-AMP08
Pendant Mount Bracket



GD-BR-AMW04
Wall Mount Bracket



GD-BR-AWJ01
Wall Mount Bracket with Junction Box



GD-CI-EC4617V
GD-CI-FC4617V
GD-CI-AP4617V



GD-BR-AJX03
Junction Box



GD-BR-AMP09
Pendant Mount Bracket



GD-BR-AMW05
Wall Mount Bracket



GD-BR-ASN01
Sunshield for Fixed Dome Cameras



GD-BR-AWJ02
Wall Mount Bracket with Junction Box



GD-CI-CP4617W
GD-CI-DP4617W



GD-BR-AJX10
Junction Box



GD-BR-AMP16
Pendant Mount Bracket



GD-BR-AMW22
Wall Mount Bracket



GD-CI-AP2627V



GD-BR-AMF06
Flush Mount Adapter



GD-BR-AMP10
Pendant Mount Bracket



GD-BR-AMW01
Wall Mount Bracket



GD-BR-AWJ07
Wall Mount Bracket with Junction Box



GD-CI-AP6637V



GD-BR-AJX13
Junction Box



GD-BR-AMF09
Flush Mount Adapter



GD-BR-AMP10
Pendant Mount Bracket



GD-BR-AMW01
Wall Mount Bracket



GD-BR-AWJ07
Wall Mount Bracket with Junction Box



GD-CI-CP4637V
GD-CI-BP8637V



GD-BR-AMC01
Corner Mount Bracket



GD-BR-AMF06
Flush Mount Adapter



GD-BR-AML03
Pole Mount Bracket



GD-BR-AMP10
Pendant Mount Bracket



GD-BR-AMW01
Wall Mount Bracket



GD-BR-AWJ07
Wall Mount Bracket with Junction Box



GD-CI-BT4537VH



GD-BR-AMF10
Flush Mount Adapter



GD-BR-AMP10
Pendant Mount Bracket



GD-BR-AMW01
Wall Mount Bracket



GD-BR-ASN01
Sunshield for Fixed Dome Cameras



GD-BR-AWJ07
Wall Mount Bracket with Junction Box



GD-CI-AT4634V



GD-BR-AMC03
Corner Mount Bracket



GD-BR-AML01
Pole Mount Bracket



GD-CI-CT12617F



GD-BR-AJX08
Junction Box



GD-BR-AMW19
Wall Mount Bracket



GD-CI-CC2616T
GD-CI-DC2616T
GD-CI-EC4617T
GD-CI-FC4617T



GD-BR-AJX05
Junction Box



GD-CI-CC4637T
GD-CI-AP4617T
GD-CI-AP6637T
GD-CI-BP8637T



GD-BR-AJX04
Junction Box



GD-BR-AMC03
Wall Mount Bracket



GD-BR-AML01
Pole Mount Bracket



GD-CI-AP2627T
GD-CI-AP4637T
GD-CI-DT4637T
GD-CI-ET4637T
GD-CI-CT4537T
GD-CI-CT8637T
GD-CI-AT12637T



GD-BR-AMC01
Corner Mount Bracket



GD-BR-AML03
Pole Mount Bracket



GD-CI-CT4537TH
GD-CI-AT4634T
GD-CI-ET4537TH
GD-CI-BT8537TH



GD-BR-AMC03
Corner Mount Bracket



GD-BR-AML01
Pole Mount Bracket



GD-CI-AC4637P



GD-BR-AMP12
Pendant Mount Bracket



GD-BR-AMW18
Wall Mount Bracket



GD-CI-CP2647P



GD-BR-AJX02
Junction Box



GD-BR-AMF02
Flush Mount Adapter



GD-BR-AMPO2
Pendant Mount Bracket (long)



GD-BR-AMPO3
Pendant Mount Bracket (medium long)



GD-BR-AMPO5
Pendant Mount Bracket (short)



GD-BR-AMW11
Wall Mount Bracket



GD-CI-CP2747P
GD-CI-AP4647P
GD-CI-AP4747P
GD-CI-AT30516Q



GD-BR-AMA01
Parapet Wall Mount

GD-BR-AMC04
Corner Mount Bracket with Junction Box



GD-BR-AMP01
Pendant Mount Bracket (long)



GD-BR-AMP04
Pendant Mount Bracket (medium long)



GD-BR-AMP06
Pendant Mount Bracket (short)



GD-BR-AMP07
Pendant Mount Bracket extendable



GD-BR-AMS01
Swan Neck Mount



GD-BR-AMW10
Wall Mount Bracket



GD-CI-BT4747P
GD-CI-AT8747P



GD-BR-AMA01S
Parapet Wall Mount



GD-BR-AMC04S
Corner Mount Bracket with Junction Box



GD-BR-AML06S
Pole Mount Bracket with Junction Box



GD-BR-AMP01S
Pendant Mount Bracket (long)



GD-BR-AMP04S
Pendant Mount Bracket (medium long)



GD-BR-AMP06S
Pendant Mount Bracket (short)



GD-BR-AMP07S
Pendant Mount Bracket extendable



GD-BR-AMW08S
Wall Mount Bracket



GD-BR-AMW10S
Wall Mount Bracket with Junction Box

GD-BR-AMW17S
Pole Mount Bracket



GD-TI-AP1614V
GD-TI-BP1603V
GD-TI-AP4607V



GD-BR-AJX01
Junction Box



GD-BR-AMP15
Pendant Mount Bracket



GD-BR-AMW16
Wall Mount Bracket



GD-BR-AWJ06
Wall Mount Bracket with Junction Box



GD-TI-BP1603T
GD-TI-BP1606T
GD-TI-BP1610T
GD-TI-AP4503T
GD-TI-AP4507T
GD-TI-AP4510T
GD-TI-AT2604T
GD-TI-AT2607T
GD-TI-AT2610T
GD-TI-AT2615T
GD-TI-AT2625T
GD-TI-CT2510T
GD-TI-AT3607T
GD-TI-AT3625T



GD-BR-AMC03
Corner Mount Bracket



GD-BR-AML01
Pole Mount Bracket



GD-CT-AC2105B



GD-BR-AWA03
Wall Mount Bracket



GD-CT-AC2113E



GD-BR-AJX05
Junction Box



GD-BR-AMW14
Wall Mount Bracket



GD-CT-AP2117E



GD-BR-AJX04
Junction Box



GD-BR-AMW14
Wall Mount Bracket



GD-CT-CC2126V



GD-BR-AJX15
Junction Box inclined



GD-BR-AJX16
Junction Box

GD-BR-AMP17
Pendant Mount Bracket



GD-BR-AMW23
Wall Mount Bracket



GD-CT-BC2126T



GD-BR-AJX04
Junction Box



GD-BR-AJX05
Junction Box

GD-BR-AMC03
Corner Mount Bracket



GD-BR-AML01
Pole Mount Bracket



GD-CT-AP5826V



GD-BR-AJX01
Junction Box



GD-BR-AMF08
Flush Mount Adapter



GD-BR-AMP14
Pendant Mount Bracket



GD-BR-AMW15
Wall Mount Bracket



GD-BR-AWJ05
Wall Mount Bracket with Junction Box



GD-CT-CP2837T



GD-BR-AJX04
Junction Box



GD-BR-AMC03
Corner Mount Bracket



GD-BR-AML01
Pole Mount Bracket



GD-CT-DP2837V



GD-BR-AJX10
Junction Box



GD-BR-AMC03
Corner Mount Bracket



GD-BR-AML01
Pole Mount Bracket



GD-BR-AMP16
Pendant Mount Bracket



GD-BR-AMW22
Wall Mount Bracket



GD-CT-BP2247P



GD-BR-AMA01
Parapet Wall Mount



GD-BR-AMC04
Corner Mount Bracket with Junction Box



GD-BR-AMP01
Pendant Mount Bracket (long)



GD-BR-AMP04
Pendant Mount Bracket (medium long)



GD-BR-AMP06
Pendant Mount Bracket (short)



GD-BR-AMP07
Pendant Mount Bracket extendable



GD-BR-AMS01
Swan Neck Mount



GD-BR-AMW10
Wall Mount Bracket



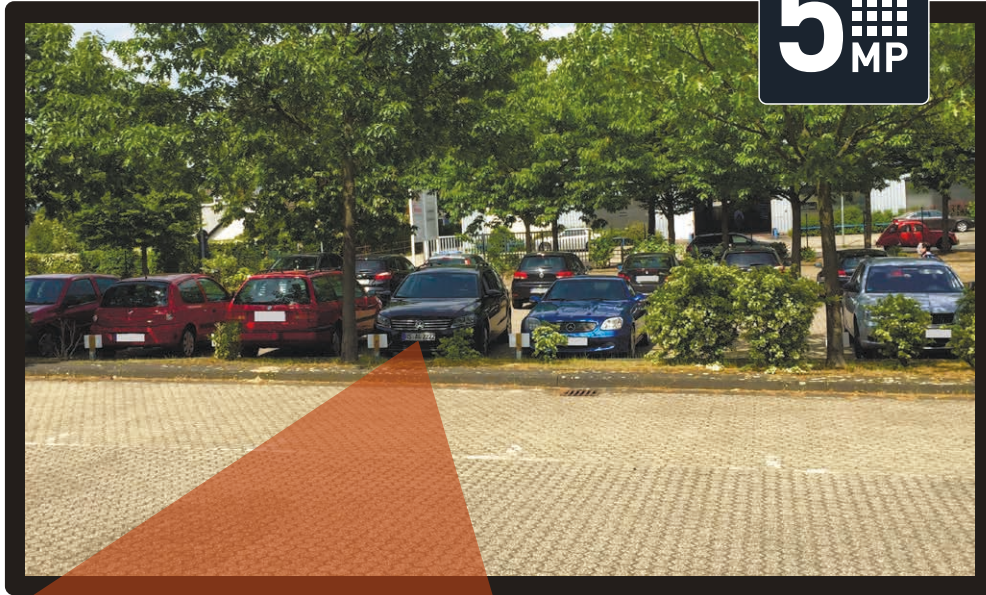
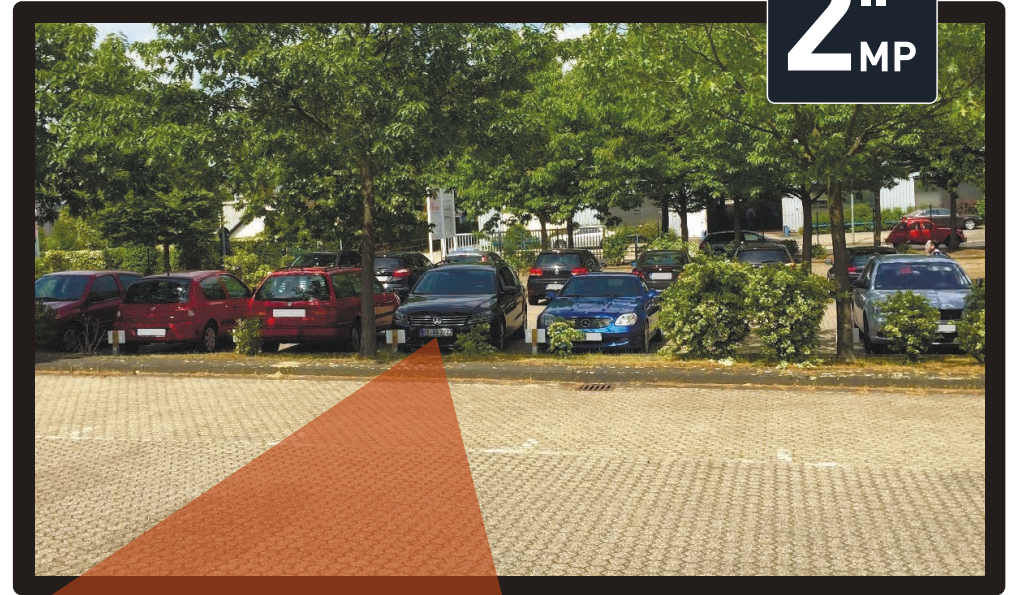
GD-BR-AWJ03
Wall Mount Bracket with Junction Box



GD-CT-BC2116T



GD-BR-AJX05
Junction Box

5
MP**2**
MP

RESOLUTION 5 MEGAPIXELS VERSUS 2 MEGAPIXELS

Resolution

GRUNDIG offers a wide range of cameras, with resolutions from 1 up to 12 megapixels. This allows use of the most cost-effective camera in many and various applications. Depending on the area that needs to be monitored, and on the level of desired recognition, GRUNDIG always offers the most effective camera to manage the surveillance job.

SMART LINE: THE NDAA-COMPLIANT PRODUCT LINE FROM GRUNDIG SECURITY

The SMART product line from GRUNDIG Security comprises nine camera models with 5 or 8 megapixels resolution and various form factors. The new product line is complemented by four — partly fanless — 4-, 8- and 16-channel recorders. A comprehensive range of accessories rounds off the NDAA-compliant SMART product line.

What can you expect from the new SMART product line from GRUNDIG Security?

Leaving our tried and tested reliability aside, you will also find a whole lot of image analysis functions, supported by artificial intelligence (AI). And there's a lot of functionality available. You can use facial recognition, for instance, to recognise people, or the LPR function to identify vehicle licence plates. Or you can quite simply reduce the frequency of false alarms signalling a spurious break-in or perimeter breach, by classifying objects as 'vehicle', 'person' or 'other'.

Are you curious about what else the products in the SMART product line from GRUNDIG Security can do?

Then you should download the SMART product overview:



The SMART cameras from GRUNDIG Security can recognise faces in crowds of people, count heads and determine the length of queues at your supermarket till, therefore helping you to make the best possible use of your resources. They'll let you know when unauthorised people cross pre-defined lines or enter certain areas, and they'll trigger an alarm when objects are left at your doorstep.

You'd rather see these analysis functions in action?

Then take a look at the "SMART Line" playlist on our YouTube channel:



Identify licence plates



Classify persons & vehicles



Identify faces



Enter area



AI FUNCTIONALITY

Detect left/removed objects



Use heat map



Cross lines



Manage queues



Analyse crowds



Count people/objects



Detect unusual noises





THE MONITOR SERIES FROM GRUNDIG SECURITY: SCREENS WITH TRADITION!

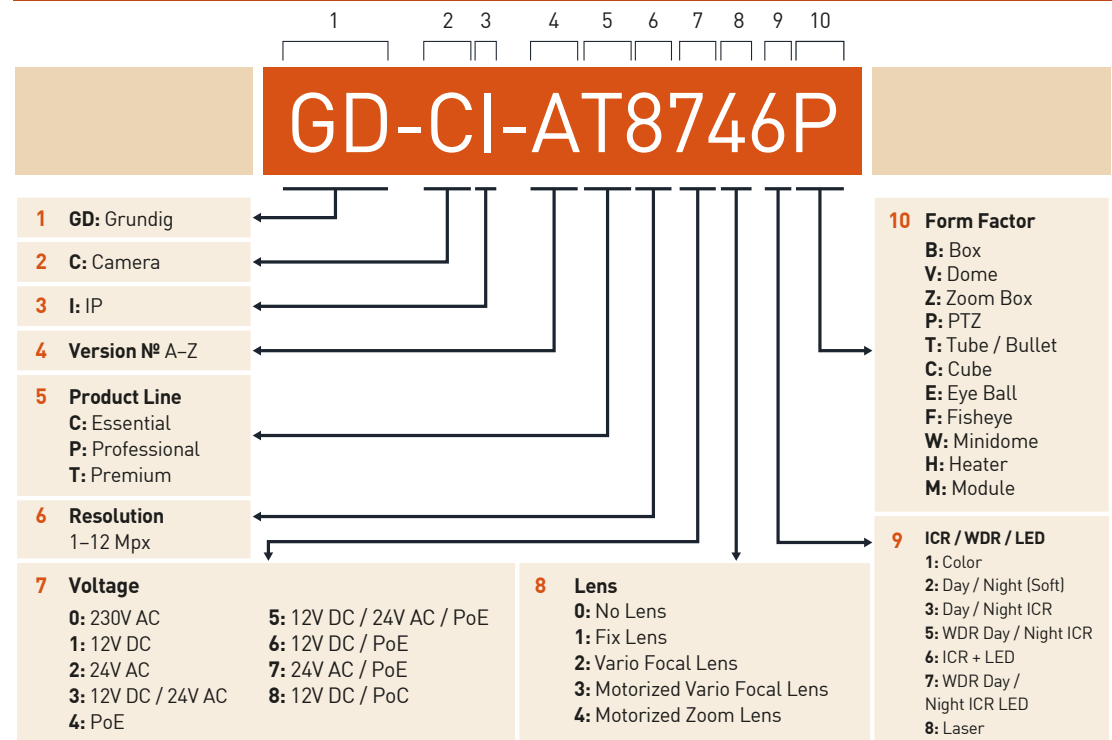
Our latest monitor series impresses with its elegant design and ultra-thin screen edges.

At the same time, it meets the requirements of modern video systems. The devices are equipped with extra robust components to ensure reliable use 24 hours a day, 7 days a week, 365 days a year.

In addition, the panels have been specially selected for video surveillance applications and use technologies to prevent ghosting and offer high brightness and contrast values.

OUR AMBITION: THE PURSUIT OF A MORE SUSTAINABLE FUTURE

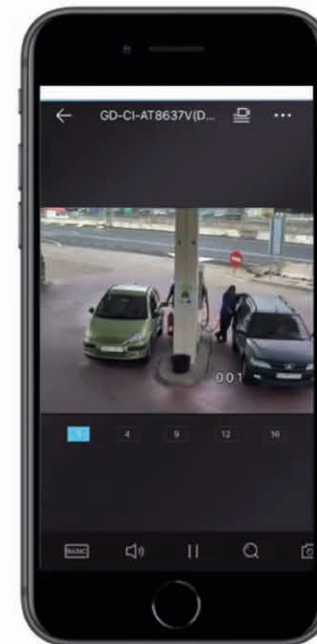
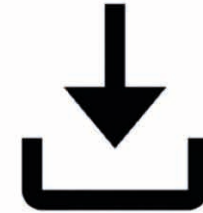
A holistic approach to sustainability and respect for all natural resources belong to our top priorities and are therefore an essential part of our DNA. This is also reflected in our products: they work as sustainably as possible while meeting the highest standards as regard to quality and aesthetics. During production, we consider the environment as much as possible, and we are always looking for ways to incorporate the idea of sustainability into our products.



DIE SCMS-APP BY GRUNDIG SECURITY: INSTALLED & CONFIGURED IN NO TIME!

Supreme Central Monitoring Service is a surveillance application for mobile phone and tablet supporting the full line of surveillance products, including NVRs, DVRs, as well as network cameras and speed domes that support cloud P2P function. The Mobile Software App has been designed to help small businesses effectively operate and manage security devices from a smartphone or tablet. The power to view live images, play back footage, and receive notifications remotely keeps owners and operators in touch with their business, even when away.

- Real-time video preview of up to 16 channels
- Swipe for PTZ control and camera movement, pinch to zoom in/out in preview mode
- Preset activation and configuration as well as brightness calibration supported
- Push alarm notification
- Snapshot function
- Manage up to 256 device sets; add/delete/modify device profiles



www.grundig-security.com

Abetechs GmbH (Grundig Security)
info@grundig-security.com